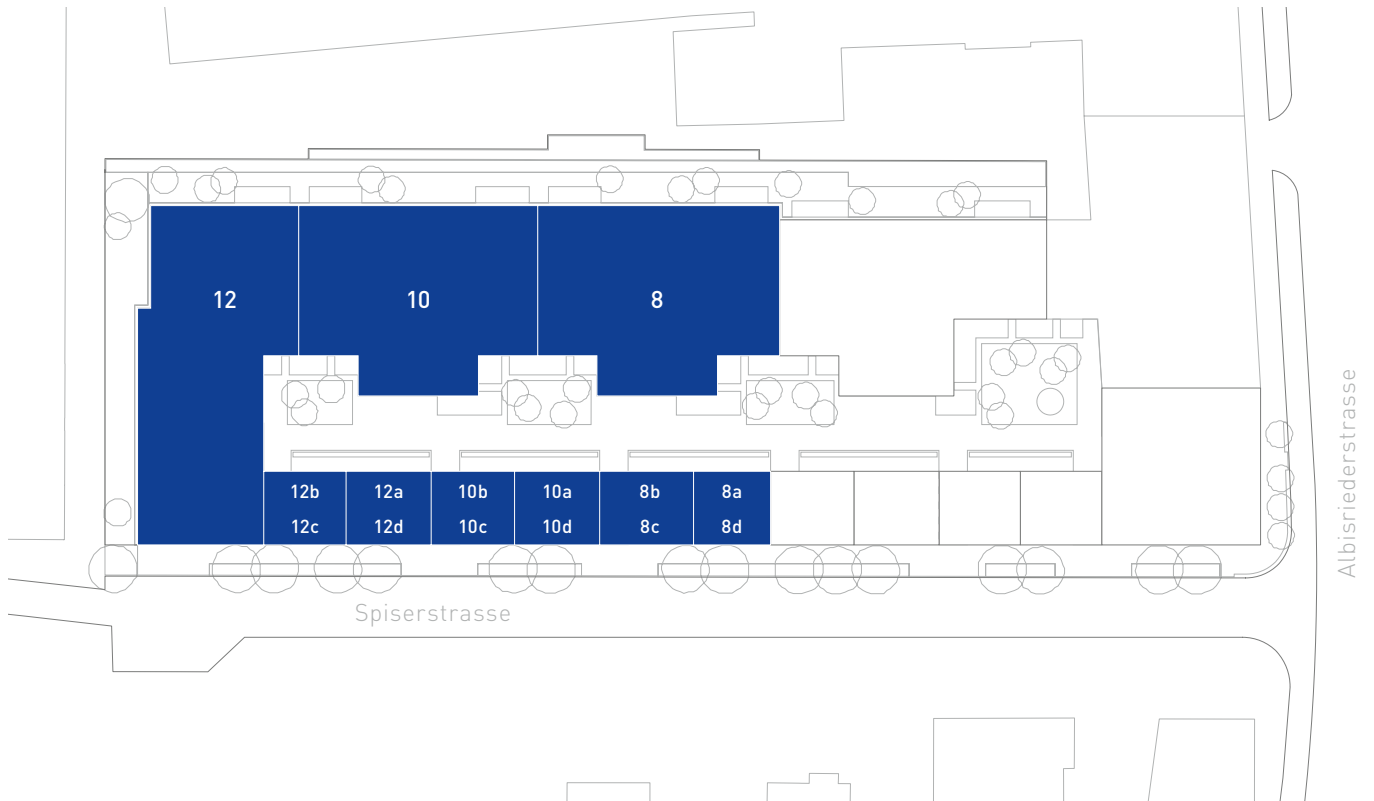


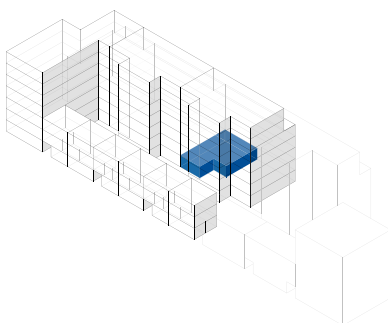
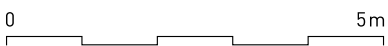
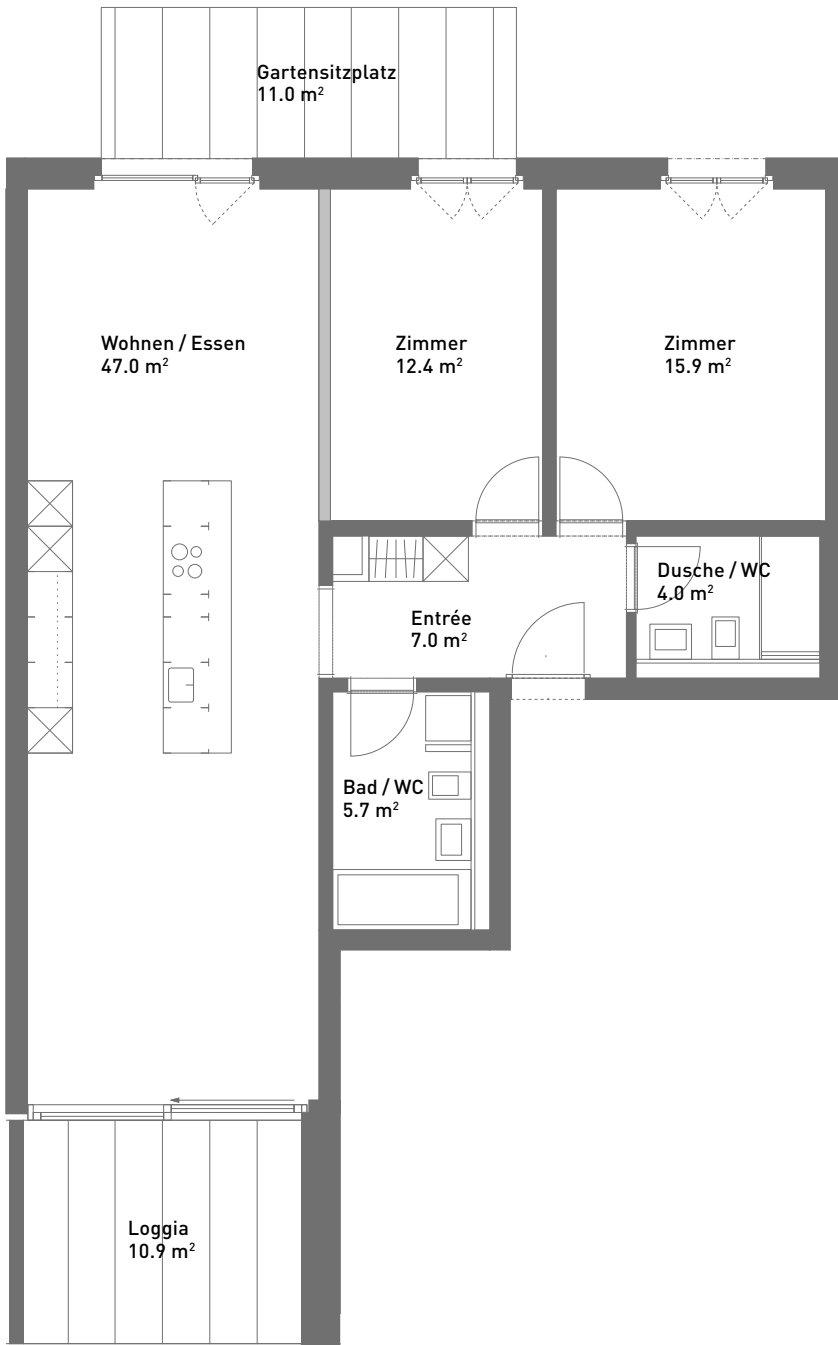
# Eigentumswohnungen, Townhouses und Ateliers Spiserstrasse, Zürich



Gebäude	Seite
Wohnungen Spiserstrasse 8	2
Townhouses Spiserstrasse 8 a/b	22
Ateliers Spiserstrasse 8 c/d	24
Wohnungen Spiserstrasse 10	26
Townhouses Spiserstrasse 10 a/b	46
Ateliers Spiserstrasse 10 c/d	48
Wohnungen Spiserstrasse 12	50
Townhouses Spiserstrasse 12 a/b	67
Ateliers Spiserstrasse 12 c/d	69
Kellerabteile/Tiefgarage	71

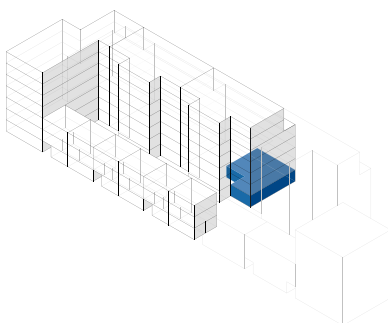
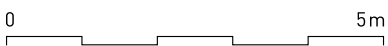
# 3.5-Zimmer-Wohnung, ca. 92 m<sup>2</sup>

Masstab 1:100 (Format A4)



Spiserstrasse 8	Wohnung Nr. 8.1
Erdgeschoss	
Aussenflächen	ca. 21 m <sup>2</sup>
Keller	ca. 8 m <sup>2</sup>
Nicht tragende Wand	■



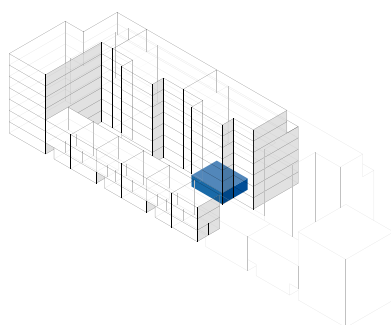
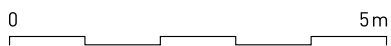
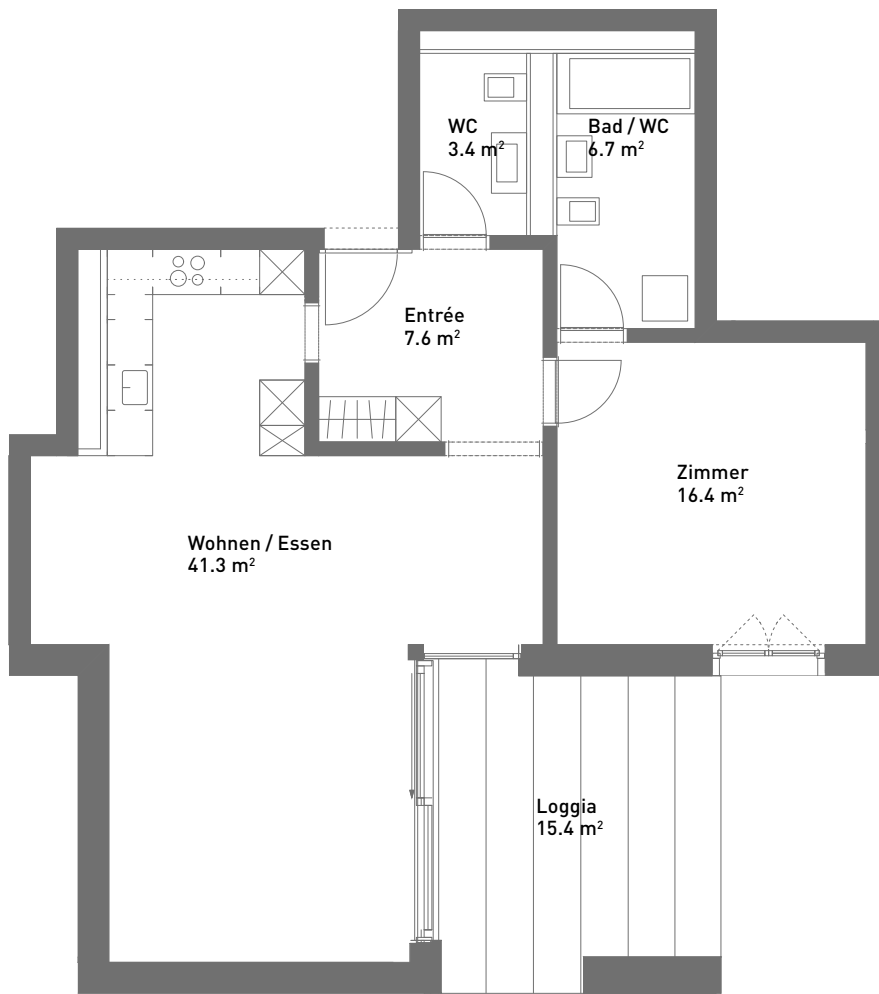


Spiserstrasse 8	Wohnung Nr. 8.2
Erdgeschoss	
Aussenflächen	ca. 22 m <sup>2</sup>
Keller	ca. 8 m <sup>2</sup>
Nicht tragende Wand	■



# 2.5-Zimmer-Wohnung, ca. 75 m<sup>2</sup>

Massstab 1:100 (Format A4)



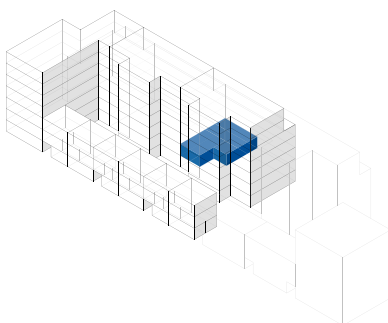
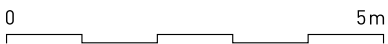
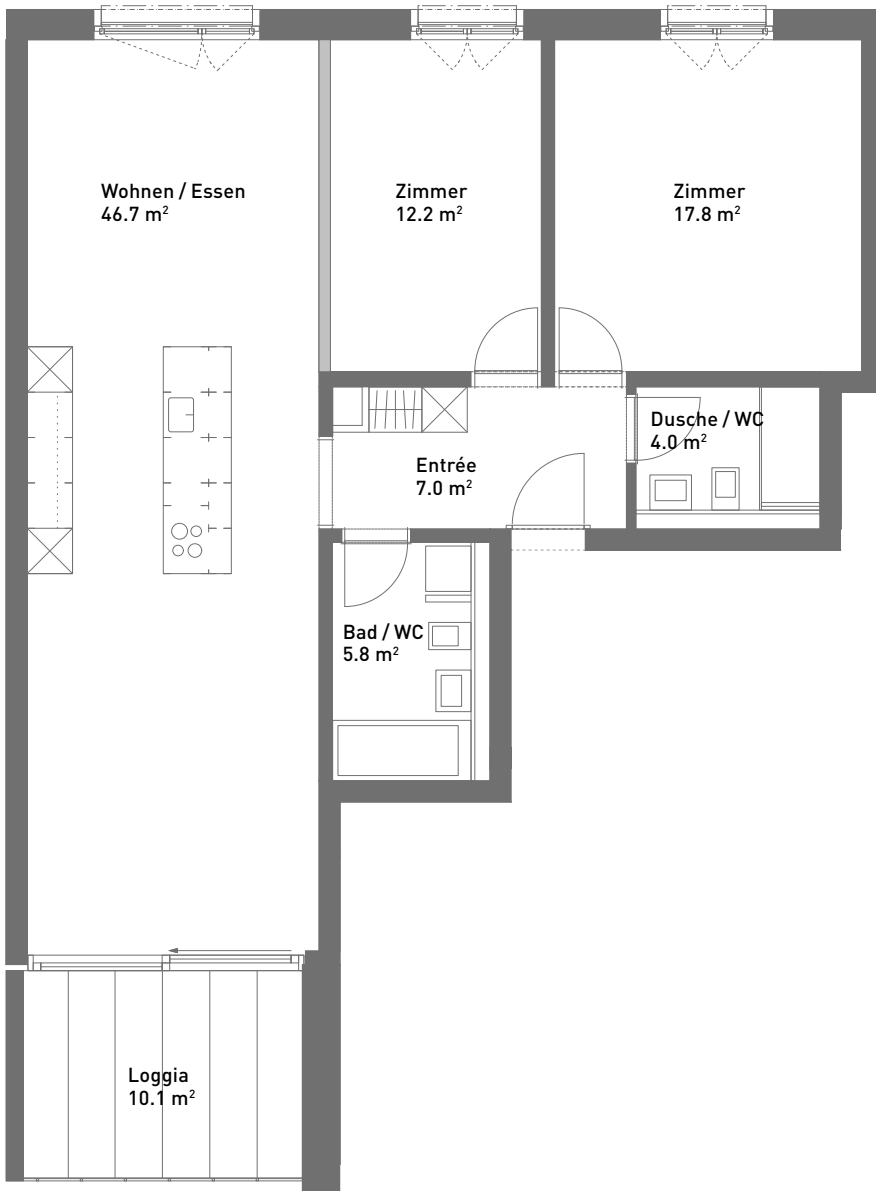
Spiserstrasse 8	Wohnung Nr. 8.3
Erdgeschoss	
Aussenflächen	ca. 15 m <sup>2</sup>
Keller	ca. 5 m <sup>2</sup>



Spiserstrasse, Zürich

# 3.5-Zimmer-Wohnung, ca. 93 m<sup>2</sup>

Masstab 1:100 (Format A4)

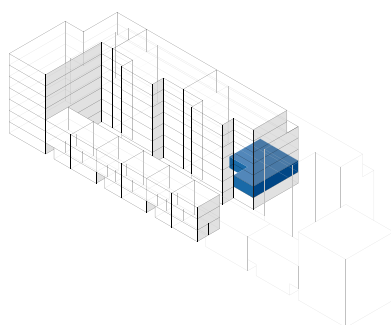
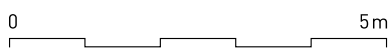


Spiserstrasse 8	Wohnung Nr. 8.101
1. Obergeschoss	
Aussenflächen	ca. 10 m <sup>2</sup>
Keller	ca. 8 m <sup>2</sup>
Nicht tragende Wand	■



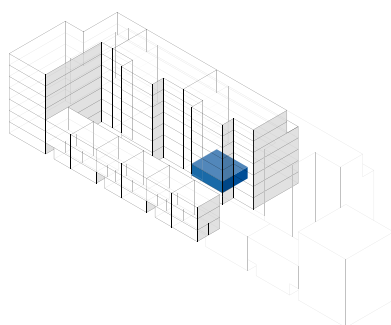
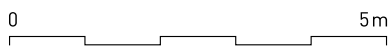
# 5.5-Zimmer-Wohnung, ca. 128 m<sup>2</sup>

Masstab 1:100 (Format A4)



Spiserstrasse 8	Wohnung Nr. 8.102
1. Obergeschoss	
Aussenflächen	ca. 10 m <sup>2</sup>
Keller	ca. 8 m <sup>2</sup>
Nicht tragende Wand	■



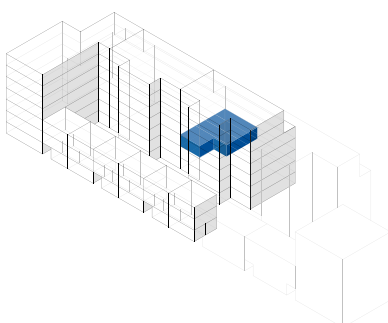
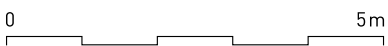
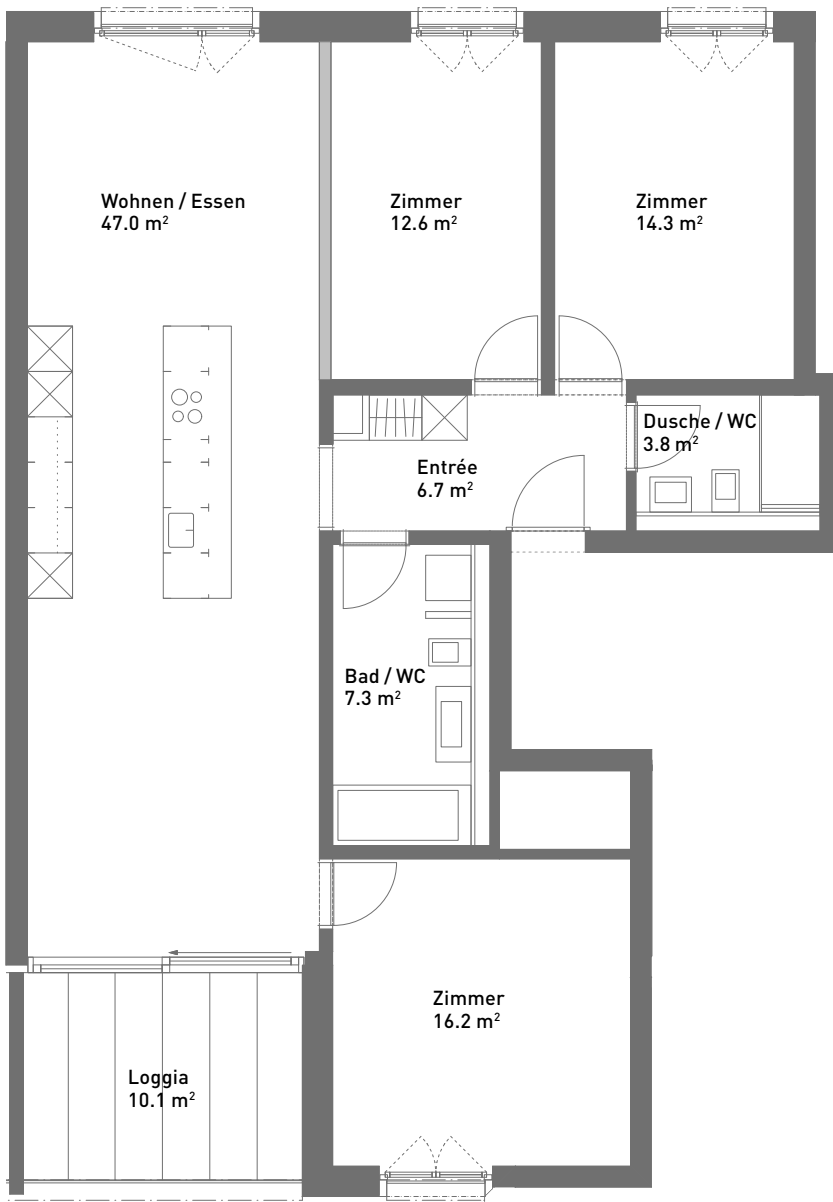


Spiserstrasse 8	Wohnung Nr. 8.103
1. Obergeschoss	
Aussenflächen	ca. 10 m <sup>2</sup>
Keller	ca. 8 m <sup>2</sup>
Nicht tragende Wand	■



# 4.5-Zimmer-Wohnung, ca. 107 m<sup>2</sup>

Masstab 1:100 (Format A4)

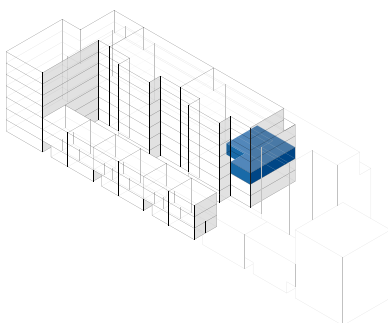
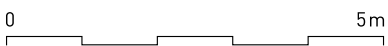


Spiserstrasse 8	Wohnung Nr. 8.201
2. Obergeschoss	
Aussenflächen	ca. 10 m <sup>2</sup>
Keller	ca. 8 m <sup>2</sup>
Nicht tragende Wand	■



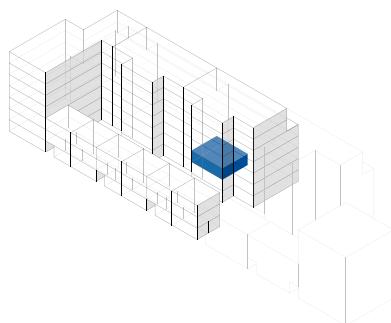
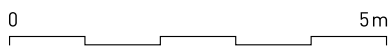
# 4.5-Zimmer-Wohnung, ca. 116 m<sup>2</sup>

Masstab 1:100 (Format A4)



Spiserstrasse 8	Wohnung Nr. 8.202
2. Obergeschoss	
Aussenflächen	ca. 10 m <sup>2</sup>
Keller	ca. 8 m <sup>2</sup>
Nicht tragende Wand	■

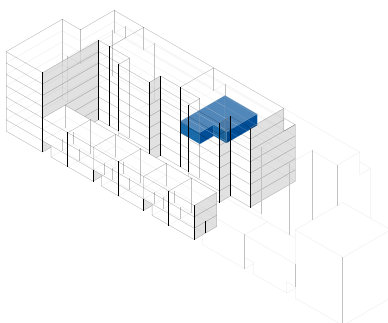
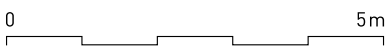
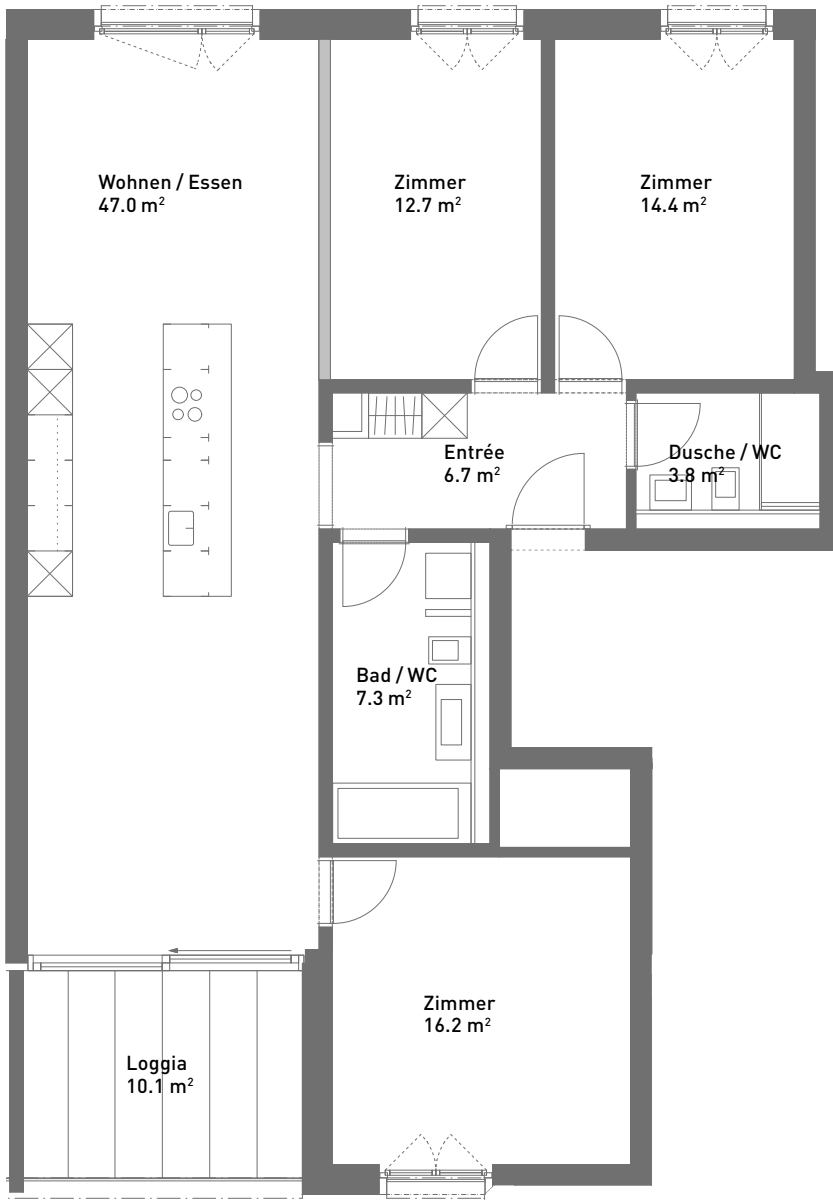




Spiserstrasse 8	Wohnung Nr. 8.203
2. Obergeschoss	
Aussenflächen	ca. 10 m <sup>2</sup>
Keller	ca. 8 m <sup>2</sup>
Nicht tragende Wand	

# 4.5-Zimmer-Wohnung, ca. 108 m<sup>2</sup>

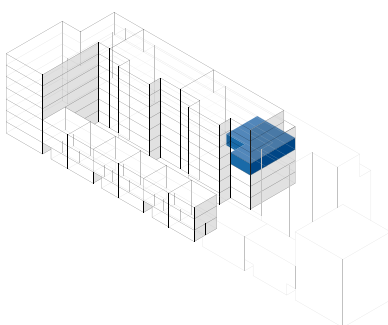
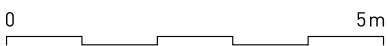
Masstab 1:100 (Format A4)



Spiserstrasse 8	Wohnung Nr. 8.301
3. Obergeschoss	
Aussenflächen	ca. 10 m <sup>2</sup>
Keller	ca. 8 m <sup>2</sup>
Nicht tragende Wand	■

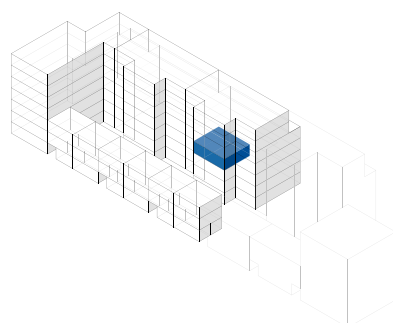
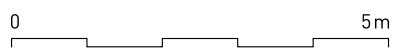
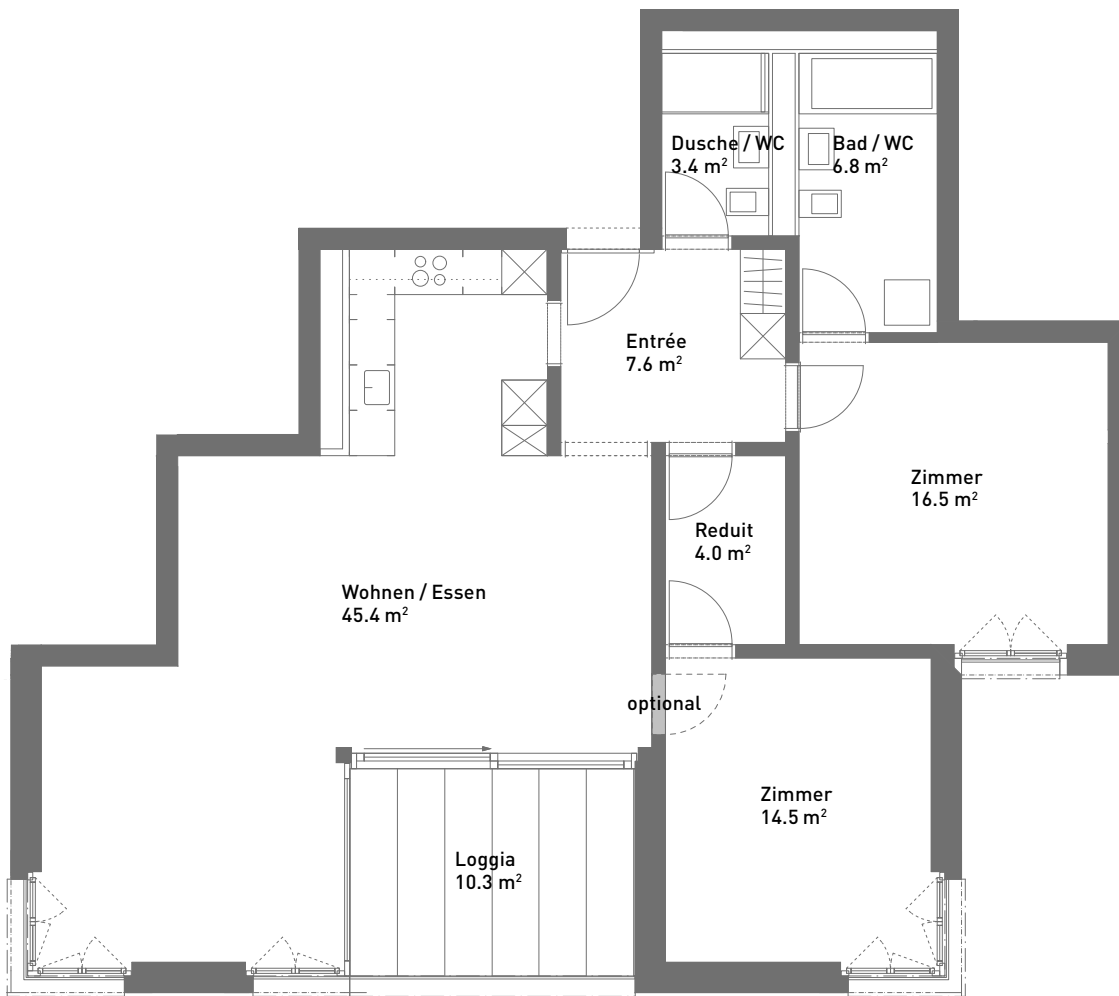
# 4.5-Zimmer-Wohnung, ca. 116 m<sup>2</sup>

Masstab 1:100 (Format A4)



Spiserstrasse 8	Wohnung Nr. 8.302
3. Obergeschoss	
Aussenflächen	ca. 10 m <sup>2</sup>
Keller	ca. 8 m <sup>2</sup>
Nicht tragende Wand	■



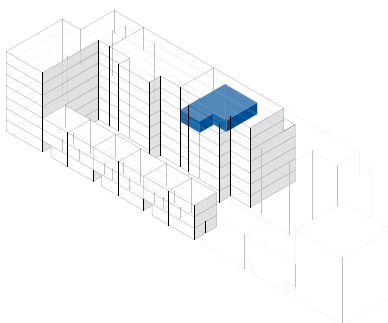
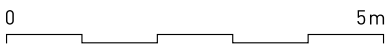
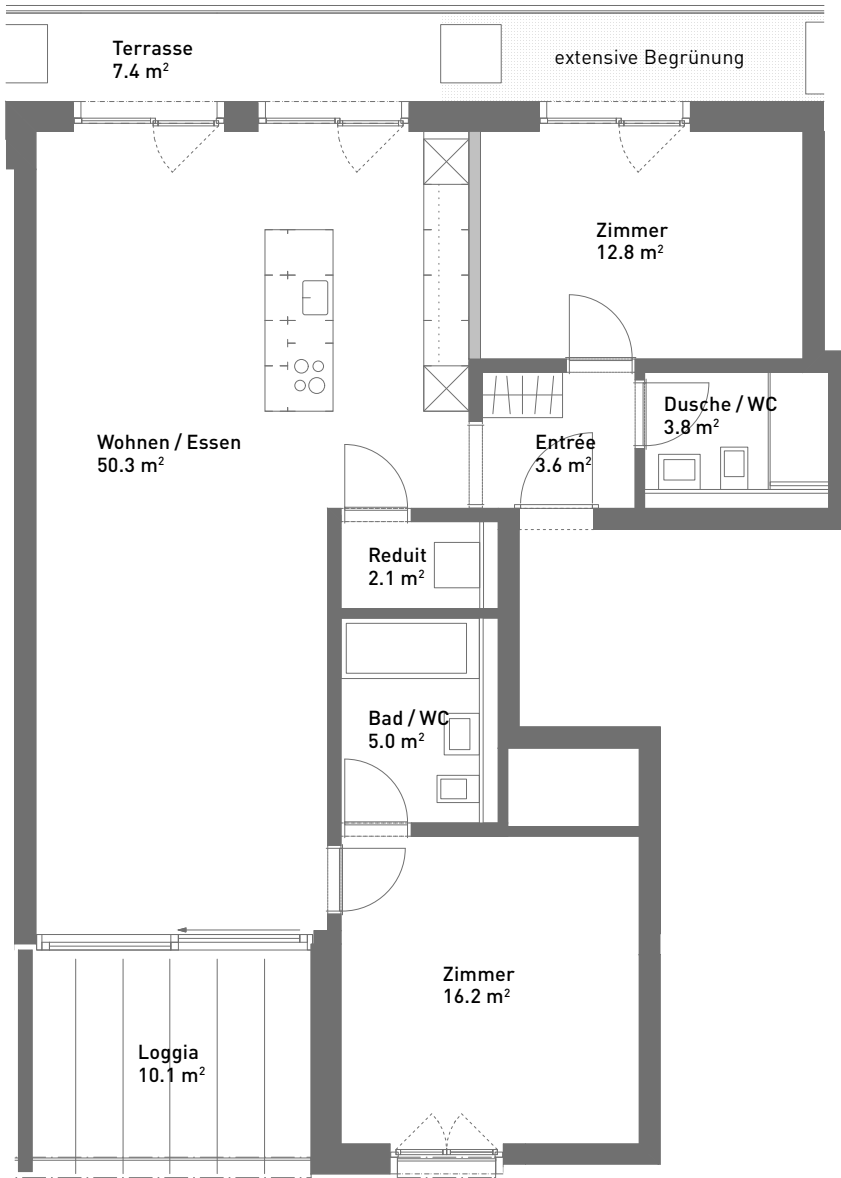


Spiserstrasse 8	Wohnung Nr. 8.303
3. Obergeschoss	
Aussenflächen	ca. 10 m <sup>2</sup>
Keller	ca. 8 m <sup>2</sup>
Nicht tragende Wand	■



# 3.5-Zimmer-Wohnung, ca. 93 m<sup>2</sup>

Massstab 1:100 (Format A4)

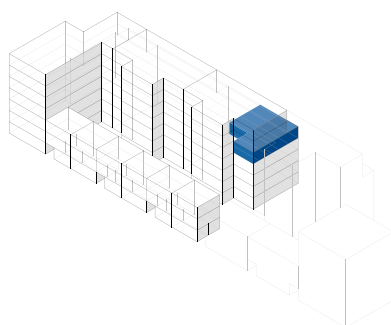
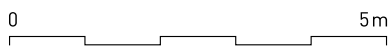
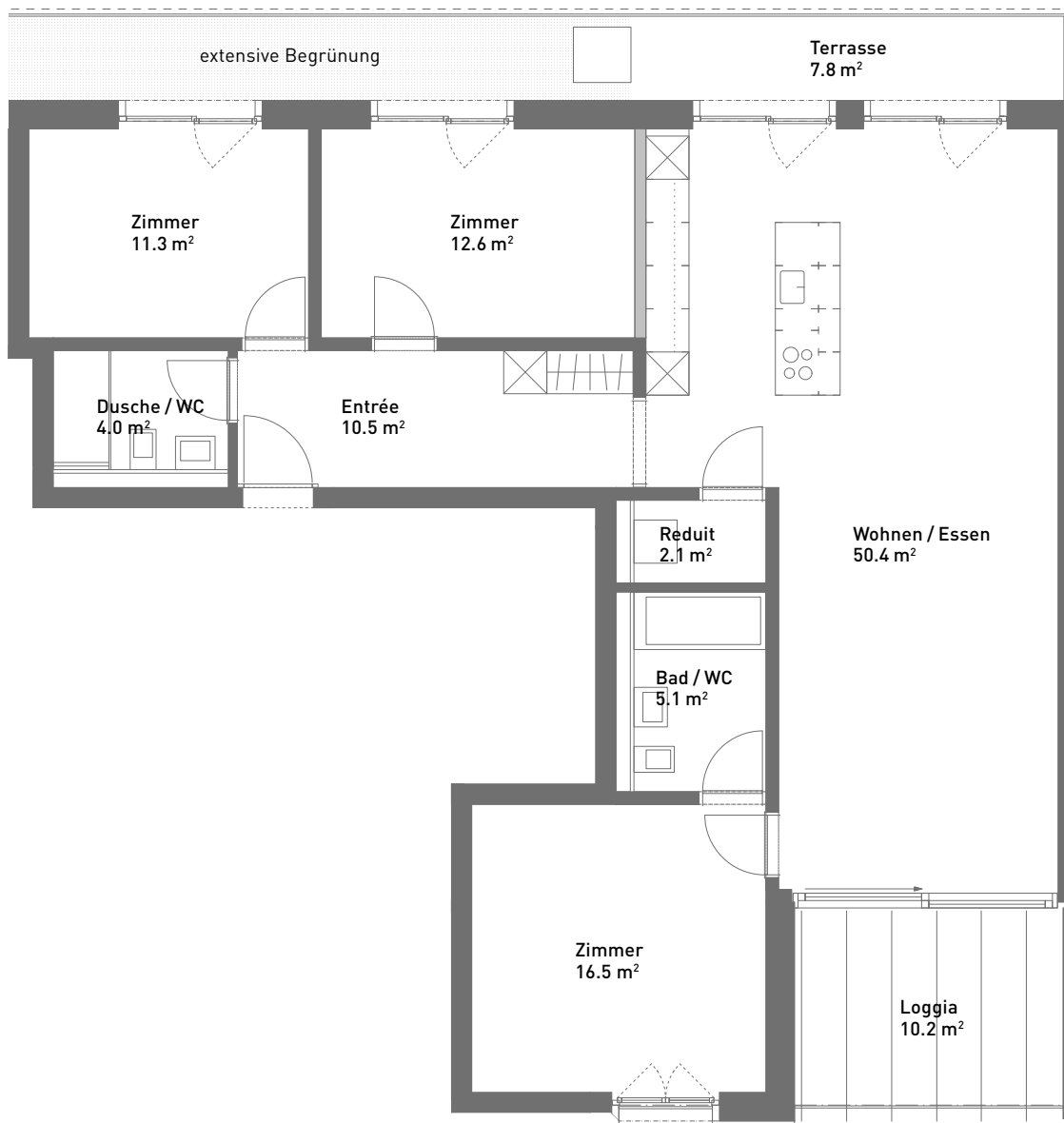


Spiserstrasse 8	Wohnung Nr. 8.401
4. Obergeschoss	
Aussenflächen	ca. 17 m <sup>2</sup>
Keller	ca. 8 m <sup>2</sup>
Nicht tragende Wand	■



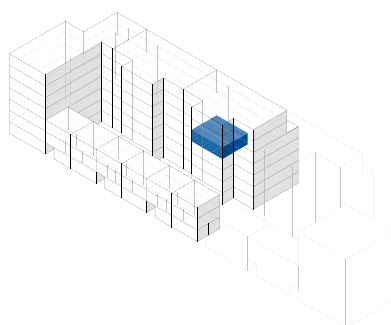
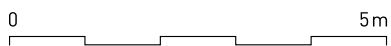
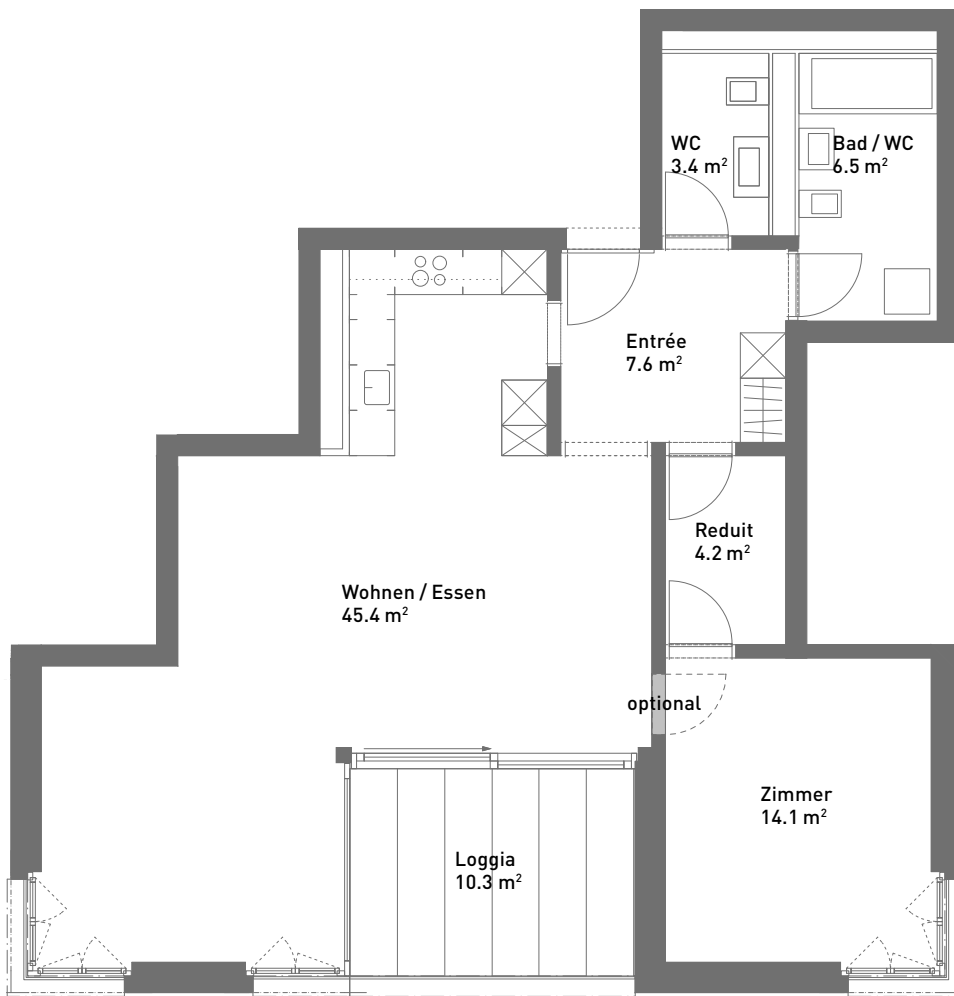
# 4.5-Zimmer-Wohnung, ca. 112 m<sup>2</sup>

Massstab 1:100 (Format A4)



Spiserstrasse 8	Wohnung Nr. 8.402
4. Obergeschoss	
Aussenflächen	ca. 18 m <sup>2</sup>
Keller	ca. 9 m <sup>2</sup>
Nicht tragende Wand	■





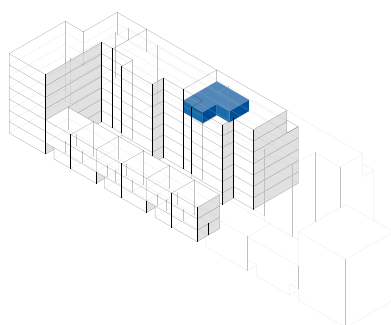
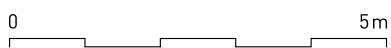
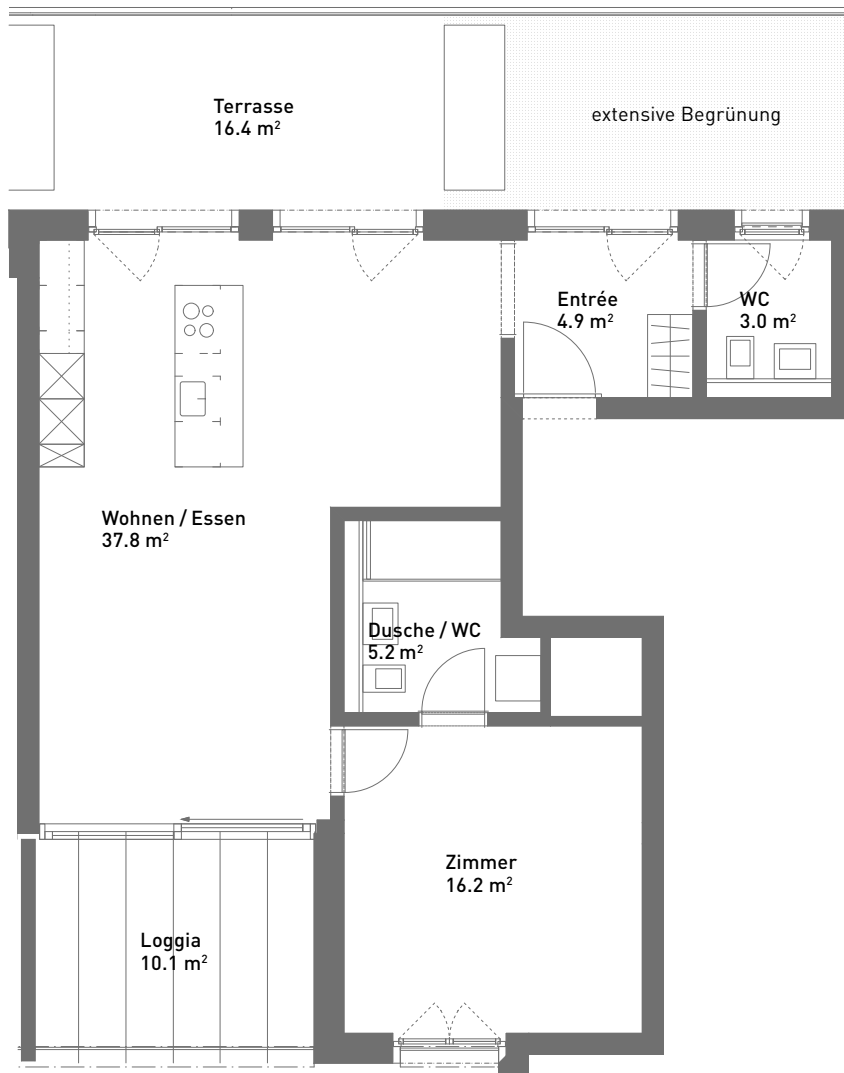
Spiserstrasse 8	Wohnung Nr. 8.403
4. Obergeschoss	
Aussenflächen	ca. 10 m <sup>2</sup>
Keller	ca. 5 m <sup>2</sup>
Nicht tragende Wand	■





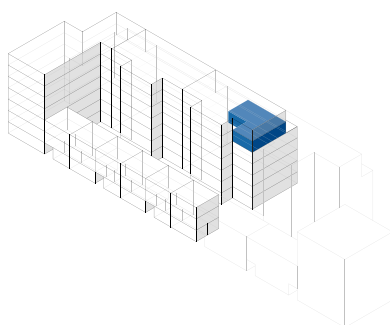
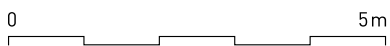
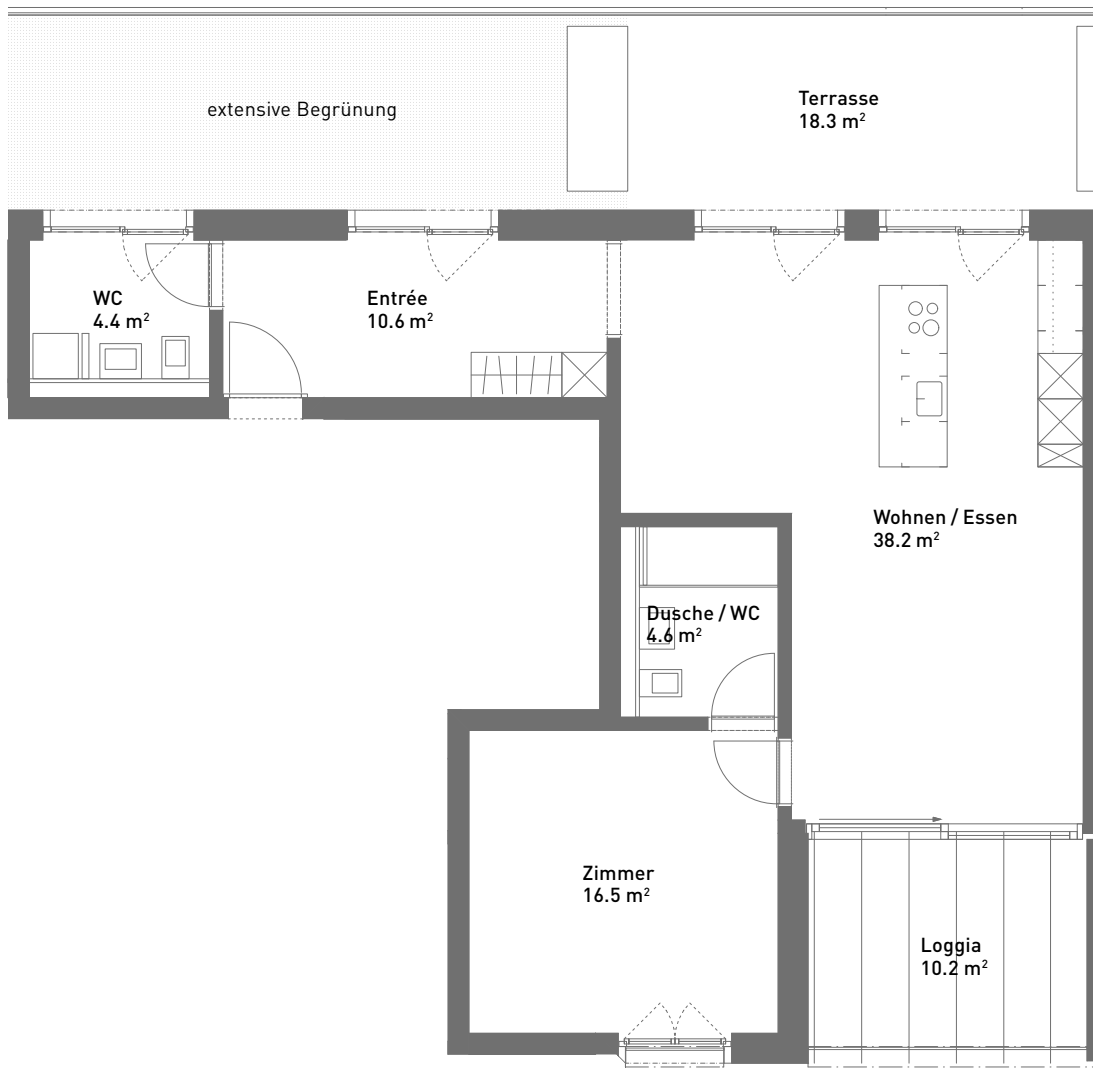
# 2.5-Zimmer-Wohnung, ca. 67 m<sup>2</sup>

Massstab 1:100 (Format A4)



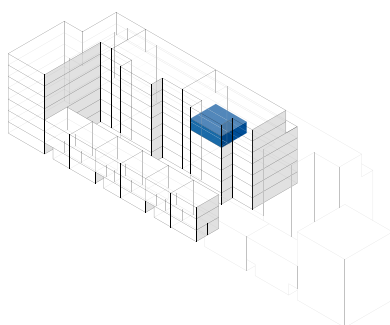
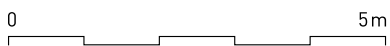
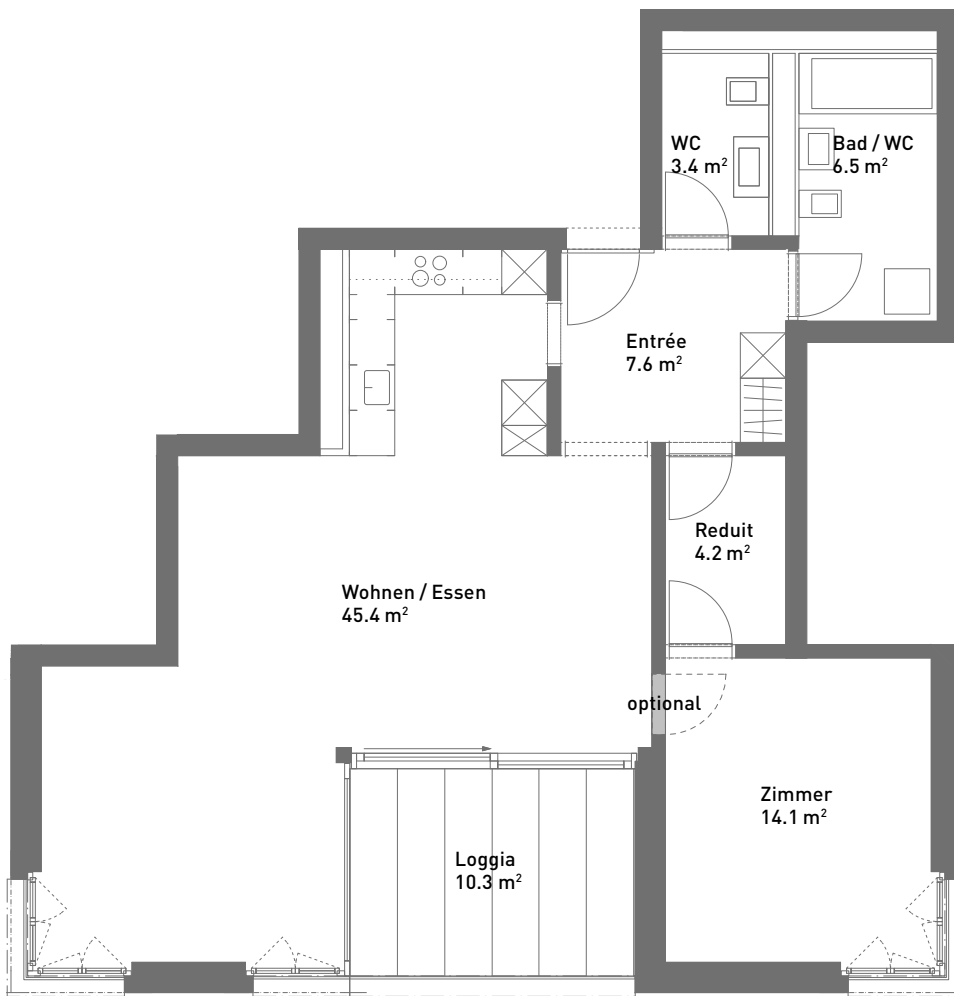
Spiserstrasse 8	Wohnung Nr. 8.501
5. Obergeschoss	
Aussenflächen	ca. 26 m <sup>2</sup>
Keller	ca. 5 m <sup>2</sup>





Spiserstrasse 8	Wohnung Nr. 8.502
5. Obergeschoss	
Aussenflächen	ca. 28 m <sup>2</sup>
Keller	ca. 5 m <sup>2</sup>



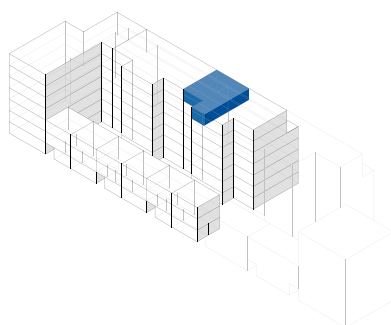
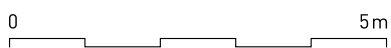


Spiserstrasse 8	Wohnung Nr. 8.503
5. Obergeschoss	
Aussenflächen	ca. 10 m <sup>2</sup>
Keller	ca. 5 m <sup>2</sup>
Nicht tragende Wand	■



# 2.5-Zimmer-Attika-Wohnung, ca. 82 m<sup>2</sup>

Masstab 1:100 (Format A4)



Spiserstrasse 8

Wohnung Nr. 8.601

Attika

Aussenflächen

ca. 47 m<sup>2</sup>

Keller

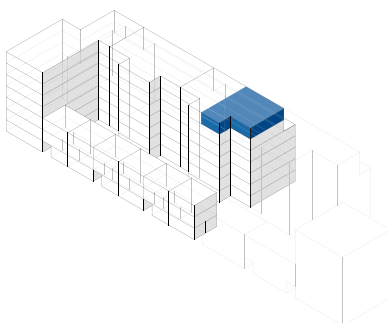
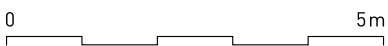
ca. 6 m<sup>2</sup>



Spiserstrasse, Zürich

# 3.5-Zimmer-Attika-Wohnung, ca. 98 m<sup>2</sup>

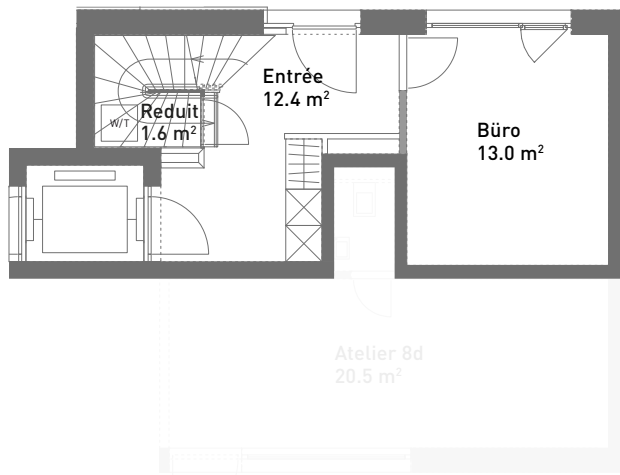
Massstab 1:100 (Format A4)



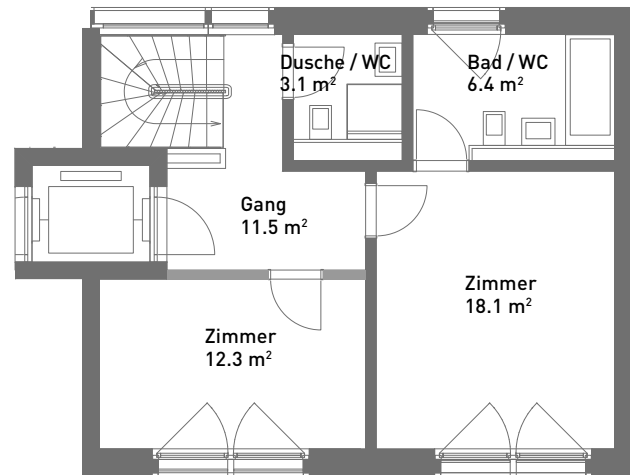
Spiserstrasse 8	Wohnung Nr. 8.602
Attika	
Aussenflächen	ca. 54 m <sup>2</sup>
Keller	ca. 9 m <sup>2</sup>
Nicht tragende Wand	■

# 4.5-Zimmer-Townhouse, ca. 120 m<sup>2</sup>

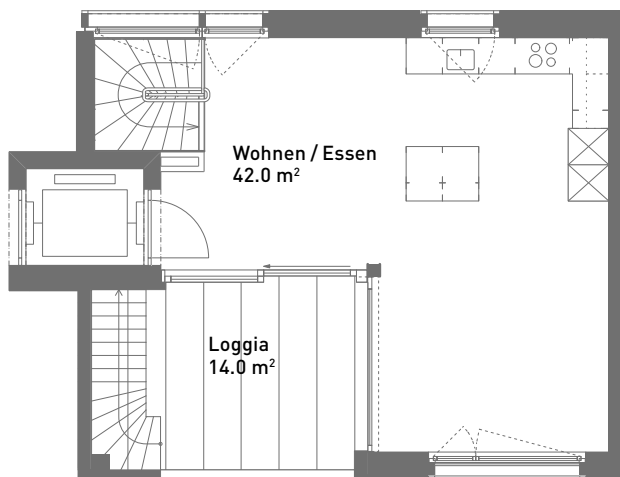
Masstab 1:125 (Format A4)



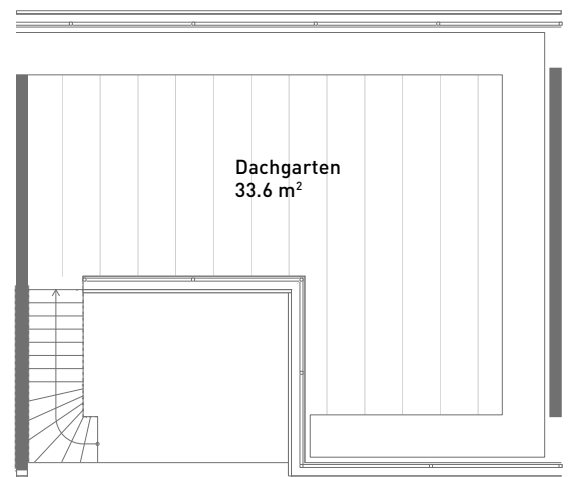
Erdgeschoss



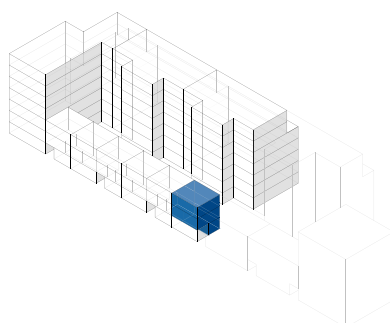
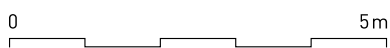
1. Obergeschoss



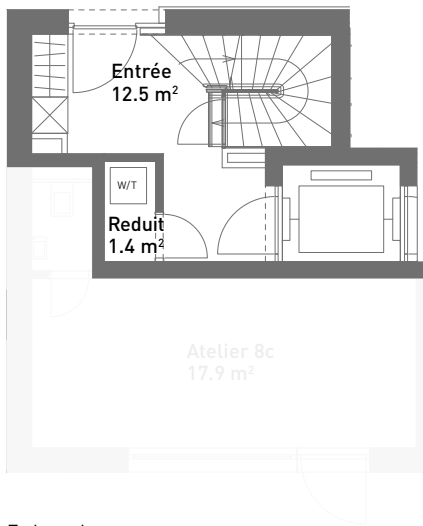
2. Obergeschoss



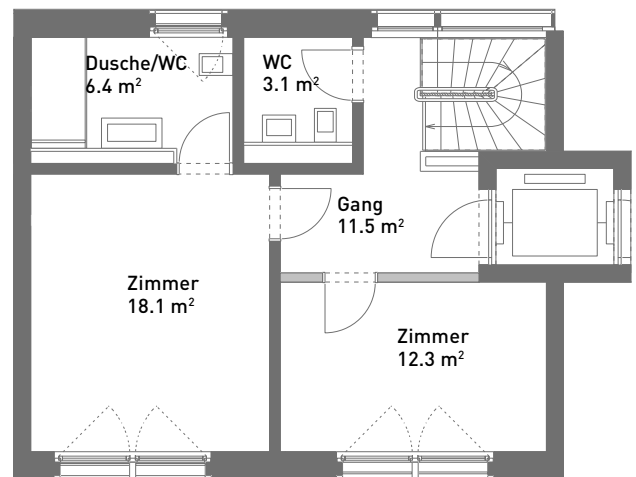
3. Obergeschoss



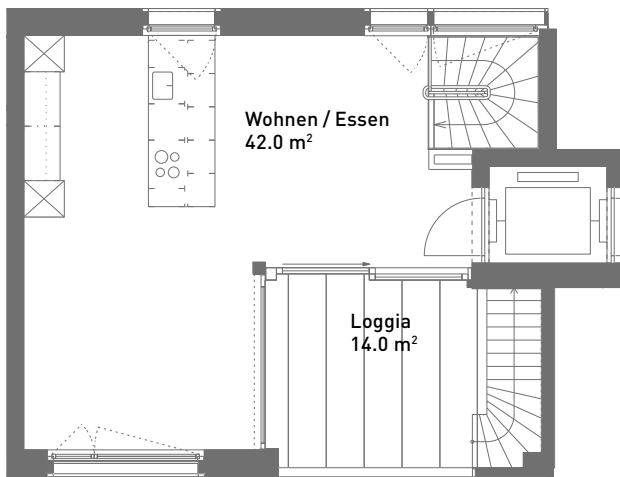
Spiserstrasse 8a	Townhouse Nr. 8a.1
Erdgeschoss–2. Obergeschoss	
Aussenflächen	ca. 47 m <sup>2</sup>
Keller	ca. 9 m <sup>2</sup>
Nicht tragende Wand	■



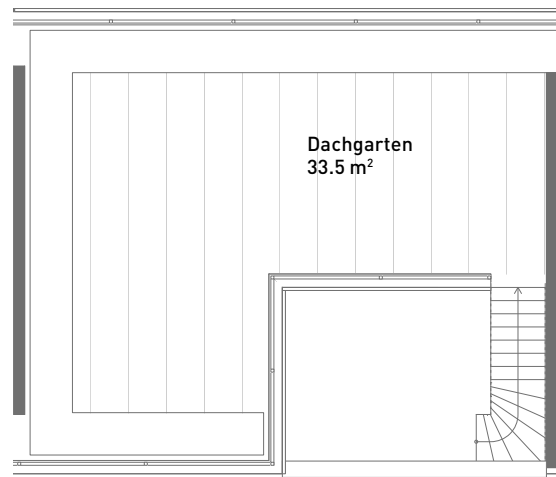
Erdgeschoss



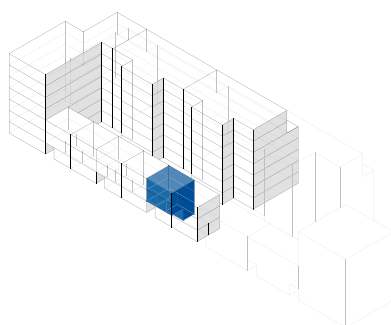
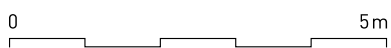
1. Obergeschoss



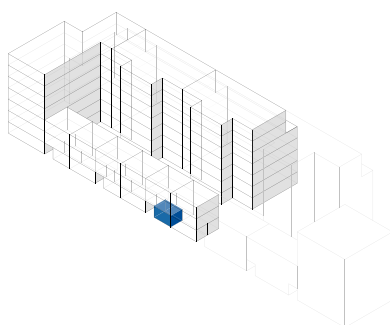
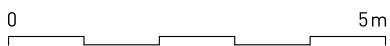
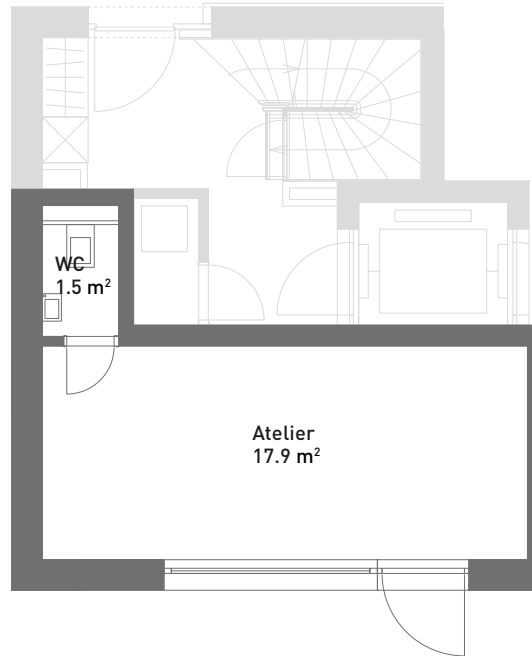
2. Obergeschoss



3. Obergeschoss



Spiserstrasse 8b	Townhouse Nr. 8b.2
Erdgeschoss–2. Obergeschoss	
Aussenflächen	ca. 47 m <sup>2</sup>
Keller	ca. 8 m <sup>2</sup>
Nicht tragende Wand	■



Spiserstrasse 8c

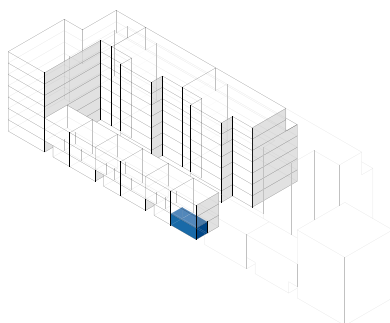
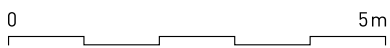
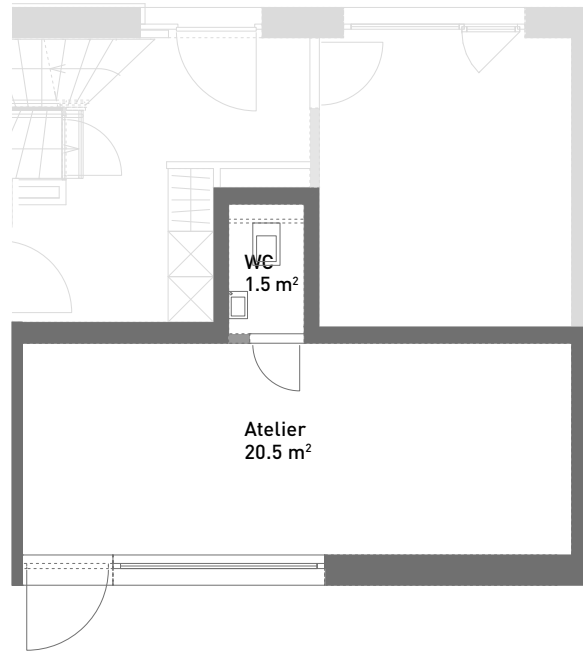
Atelier Nr. 8c

Erdgeschoss



Spiserstrasse, Zürich





Spiserstrasse 8d

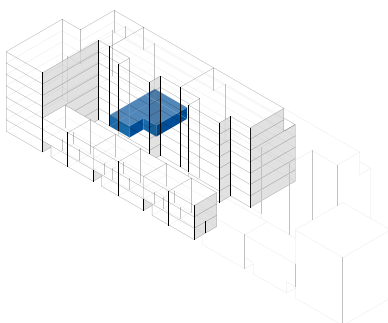
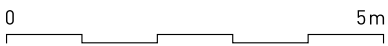
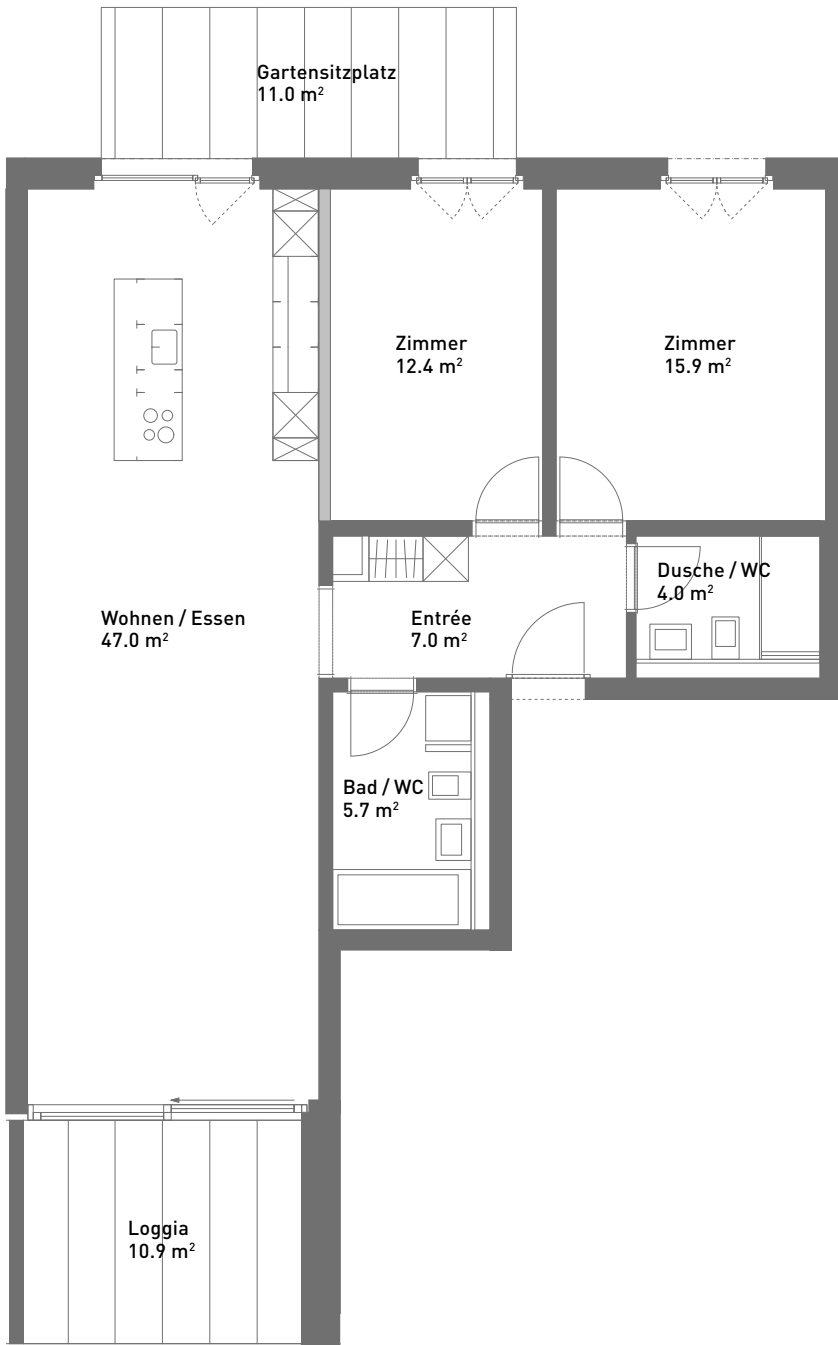
Atelier Nr. 8d

Erdgeschoss



# 3.5-Zimmer-Wohnung, ca. 92 m<sup>2</sup>

Masstab 1:100 (Format A4)

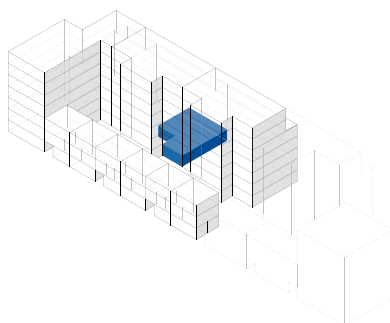
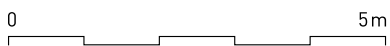
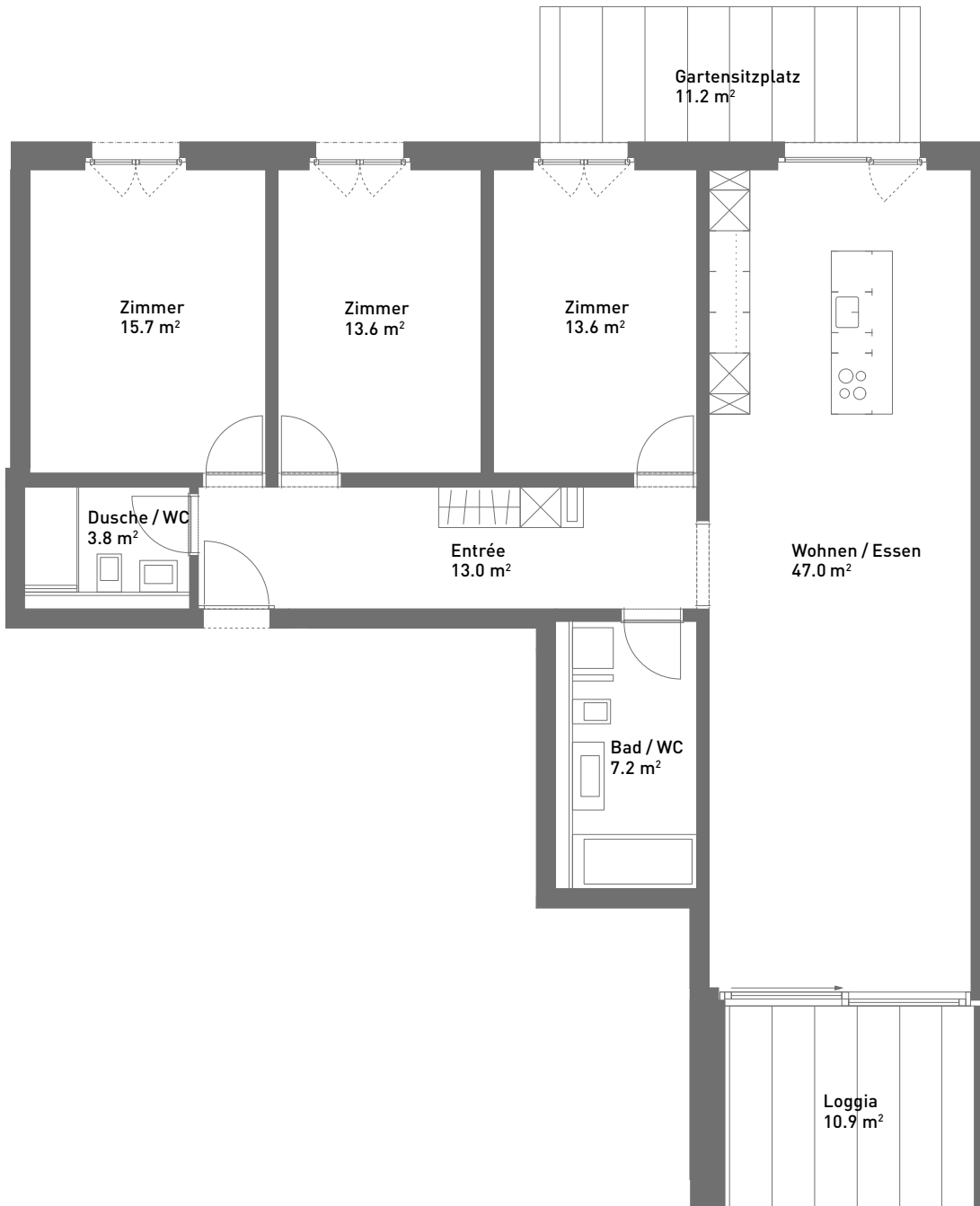


Spiserstrasse 10	Wohnung Nr. 10.1
Erdgeschoss	
Aussenflächen	ca. 21 m <sup>2</sup>
Keller	ca. 8 m <sup>2</sup>
Nicht tragende Wand	■



# 4.5-Zimmer-Wohnung, ca. 113 m<sup>2</sup>

Masstab 1:100 (Format A4)

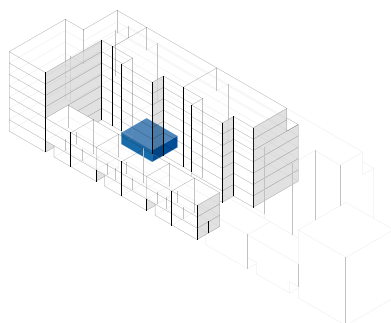
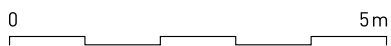
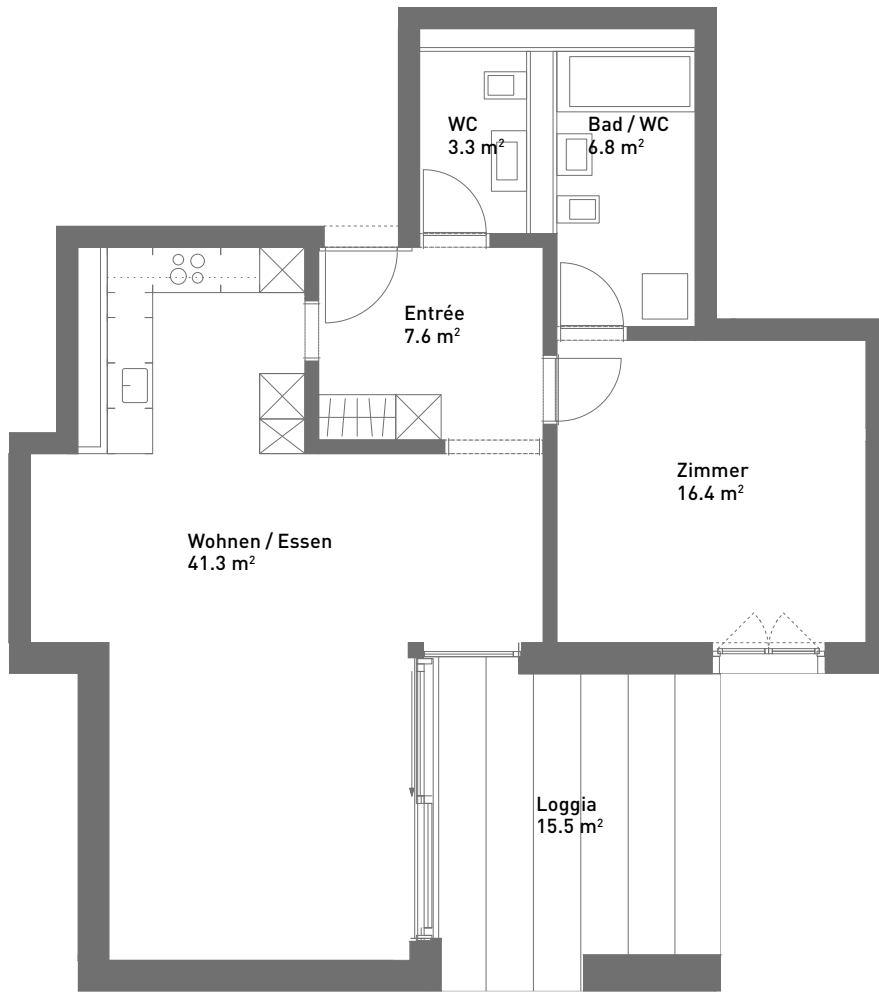


Spiserstrasse 10	Wohnung Nr. 10.2
Erdgeschoss	
Aussenflächen	ca. 22 m <sup>2</sup>
Keller	ca. 9 m <sup>2</sup>



# 2.5-Zimmer-Wohnung, ca. 75 m<sup>2</sup>

Massstab 1:100 (Format A4)



Spiserstrasse 10

Wohnung Nr. 10.3

Erdgeschoss

Aussenflächen

ca. 15 m<sup>2</sup>

Keller

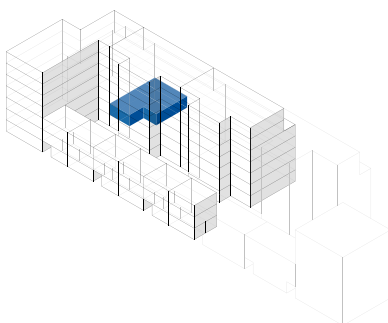
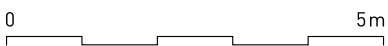
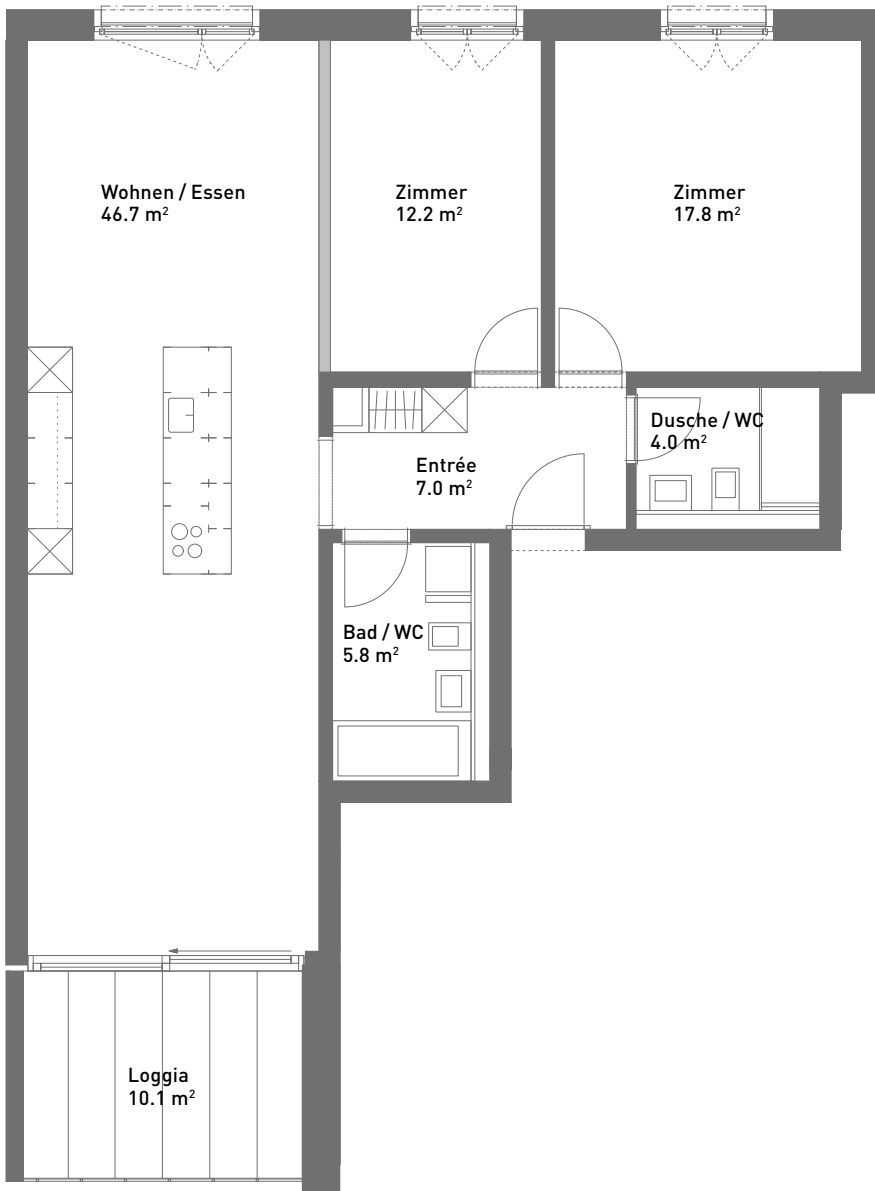
ca. 5 m<sup>2</sup>



Spiserstrasse, Zürich

# 3.5-Zimmer-Wohnung, ca. 93 m<sup>2</sup>

Masstab 1:100 (Format A4)

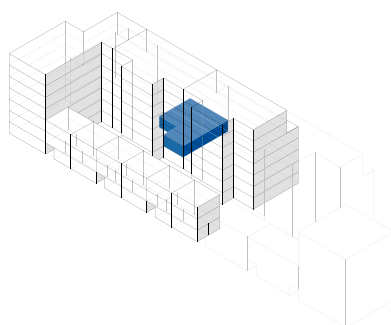
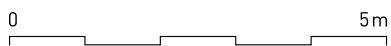


Spiserstrasse 10	Wohnung Nr. 10.101
1. Obergeschoss	
Aussenflächen	ca. 10 m <sup>2</sup>
Keller	ca. 8 m <sup>2</sup>
Nicht tragende Wand	■



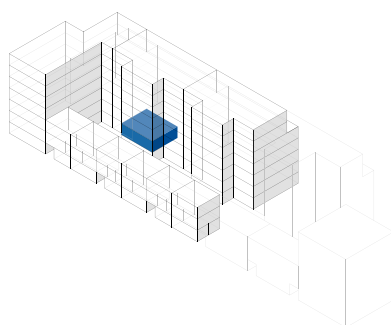
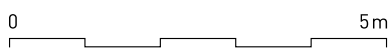
# 5.5-Zimmer-Wohnung, ca. 127 m<sup>2</sup>

Masstab 1:100 (Format A4)



Spiserstrasse 10	Wohnung Nr. 10.102
1. Obergeschoss	
Aussenflächen	ca. 10 m <sup>2</sup>
Keller	ca. 8 m <sup>2</sup>



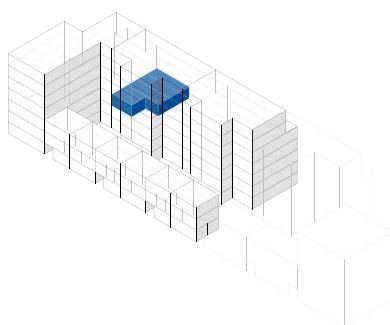
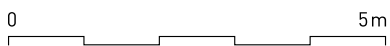
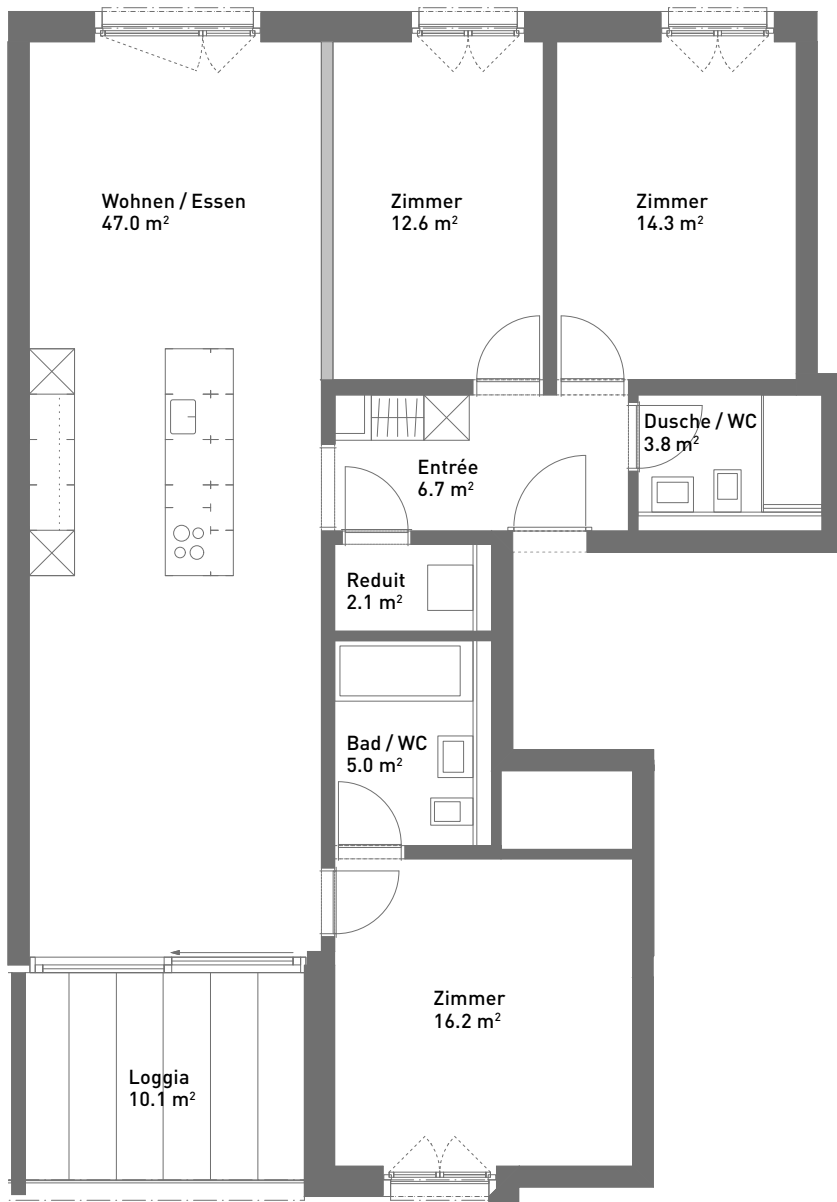


Spiserstrasse 10	Wohnung Nr. 10.103
1. Obergeschoss	
Aussenflächen	ca. 10 m <sup>2</sup>
Keller	ca. 8 m <sup>2</sup>
Nicht tragende Wand	■



# 4.5-Zimmer-Wohnung, ca. 107 m<sup>2</sup>

Masstab 1:100 (Format A4)



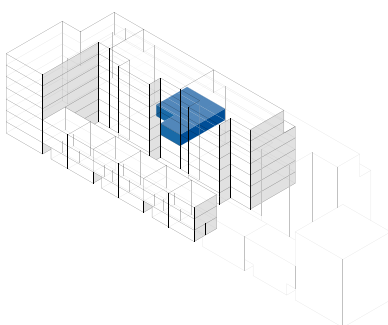
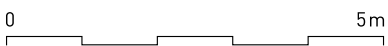
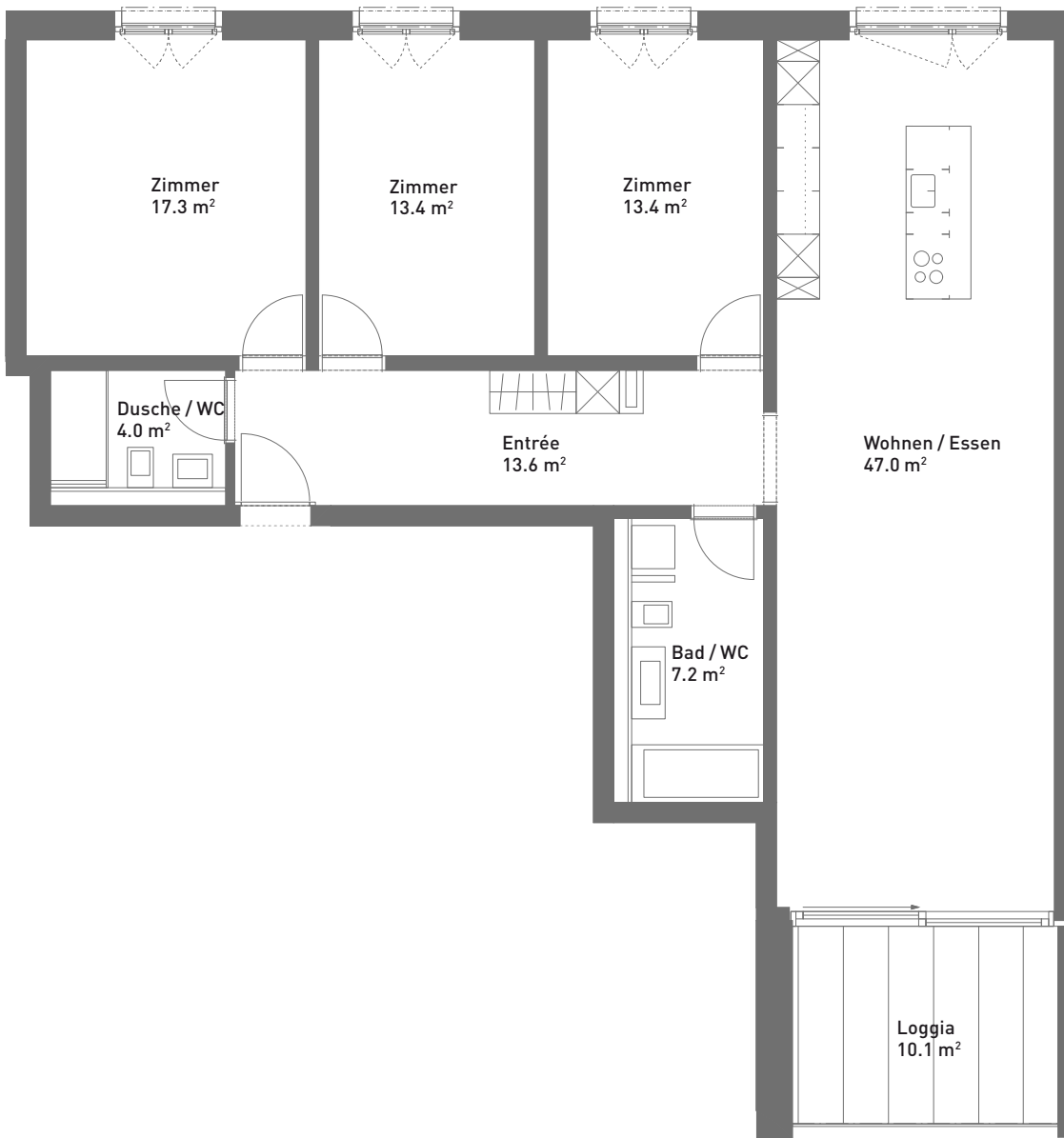
Spiserstrasse 10	Wohnung Nr. 10.201
2. Obergeschoss	
Aussenflächen	ca. 10 m <sup>2</sup>
Keller	ca. 8 m <sup>2</sup>
Nicht tragende Wand	■





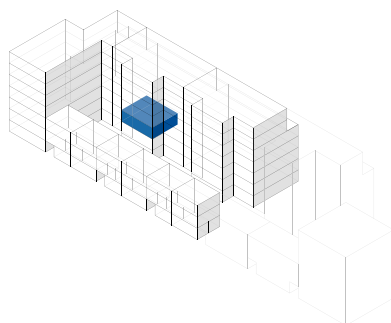
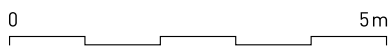
# 4.5-Zimmer-Wohnung, ca. 115 m<sup>2</sup>

Masstab 1:100 (Format A4)



Spiserstrasse 10	Wohnung Nr. 10.202
2. Obergeschoss	
Aussenflächen	ca. 10 m <sup>2</sup>
Keller	ca. 8 m <sup>2</sup>



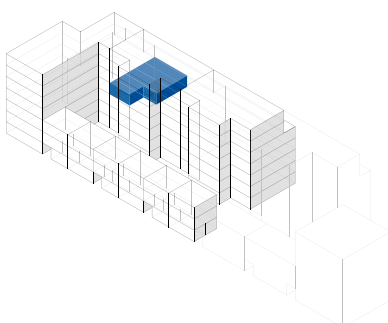
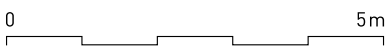
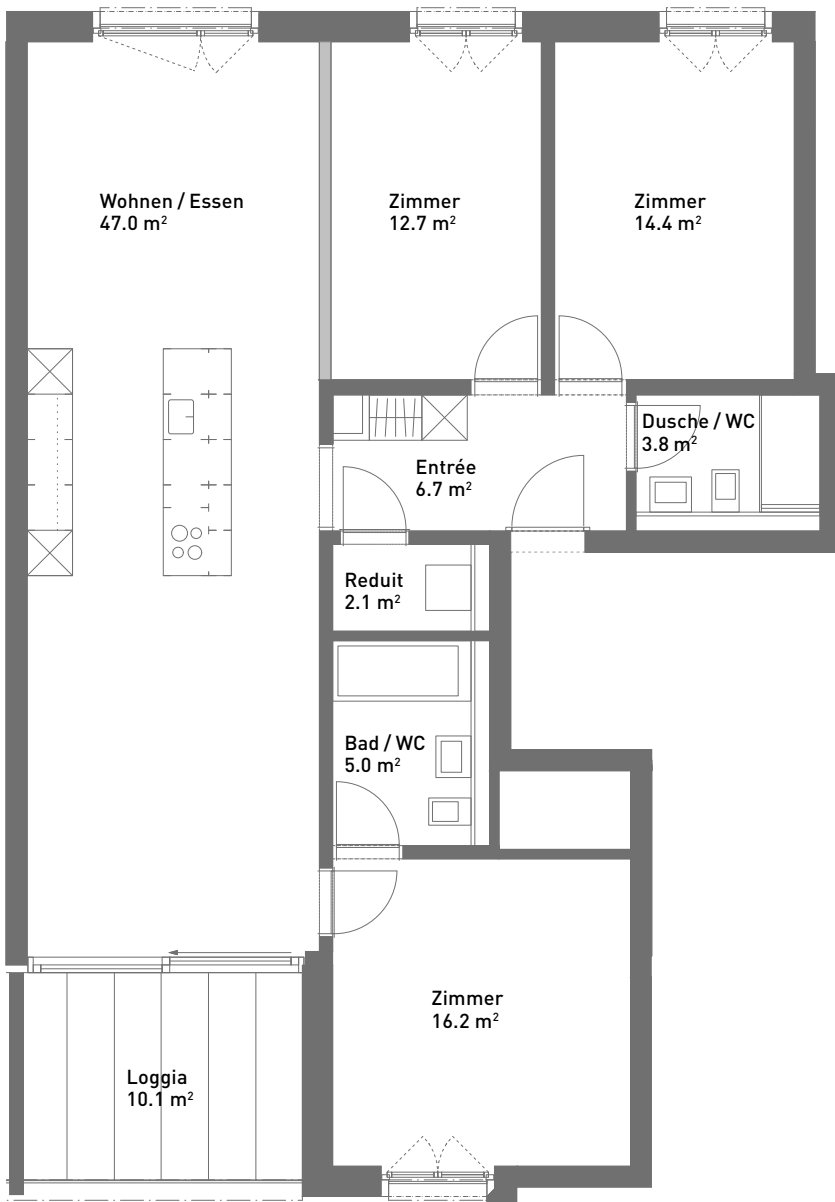


Spiserstrasse 10	Wohnung Nr. 10.203
2. Obergeschoss	
Aussenflächen	ca. 10 m <sup>2</sup>
Keller	ca. 8 m <sup>2</sup>
Nicht tragende Wand	■



# 4.5-Zimmer-Wohnung, ca. 107 m<sup>2</sup>

Masstab 1:100 (Format A4)

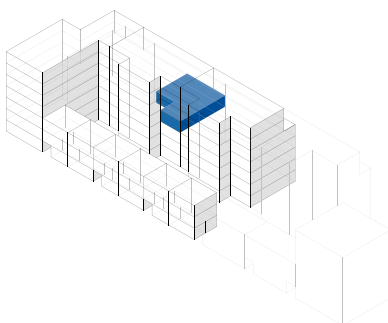
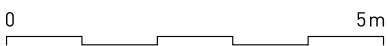
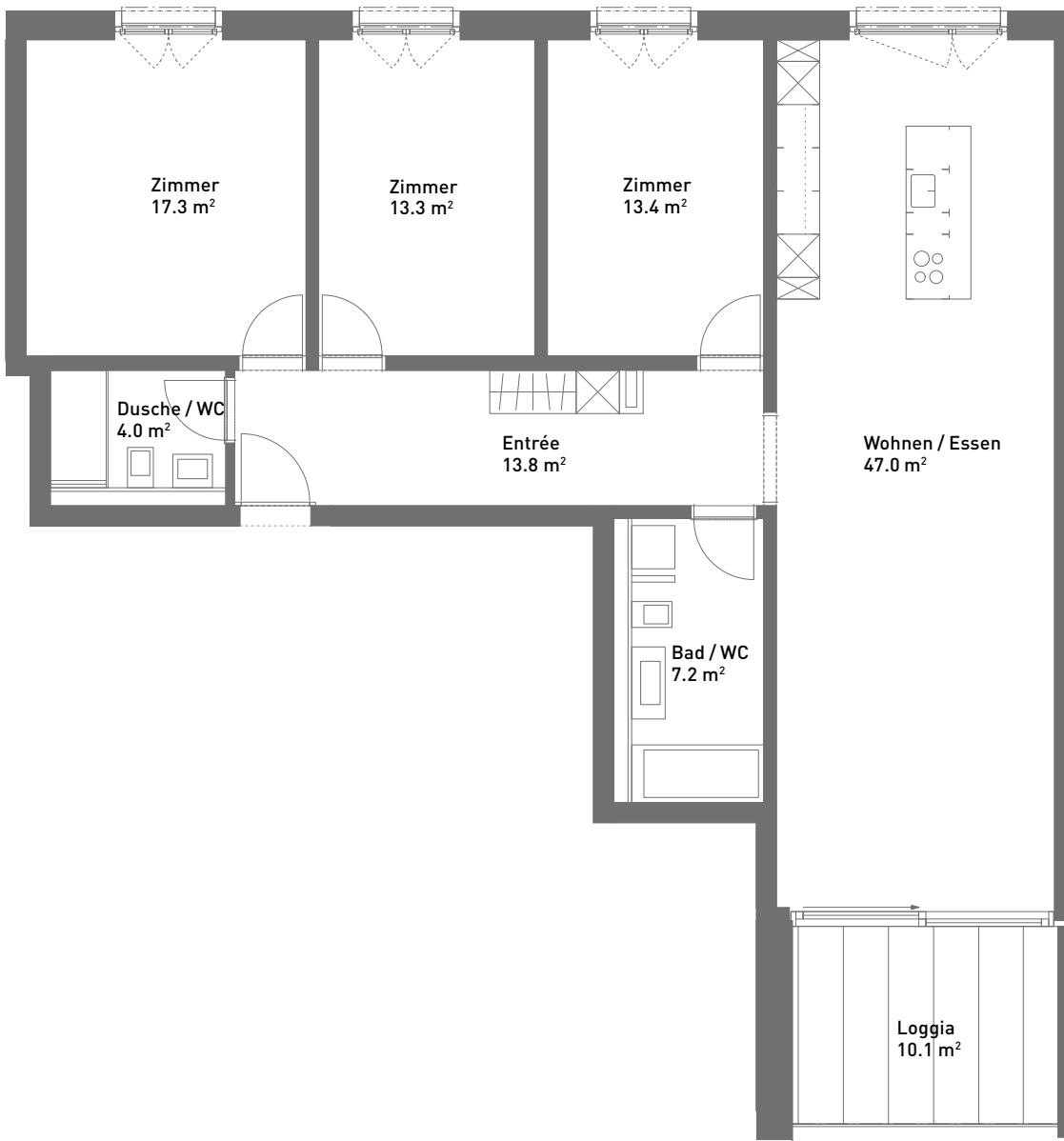


Spiserstrasse 10	Wohnung Nr. 10.301
3. Obergeschoss	
Aussenflächen	ca. 10 m <sup>2</sup>
Keller	ca. 8 m <sup>2</sup>
Nicht tragende Wand	■



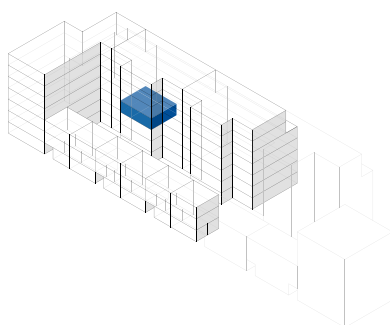
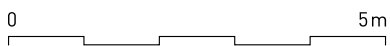
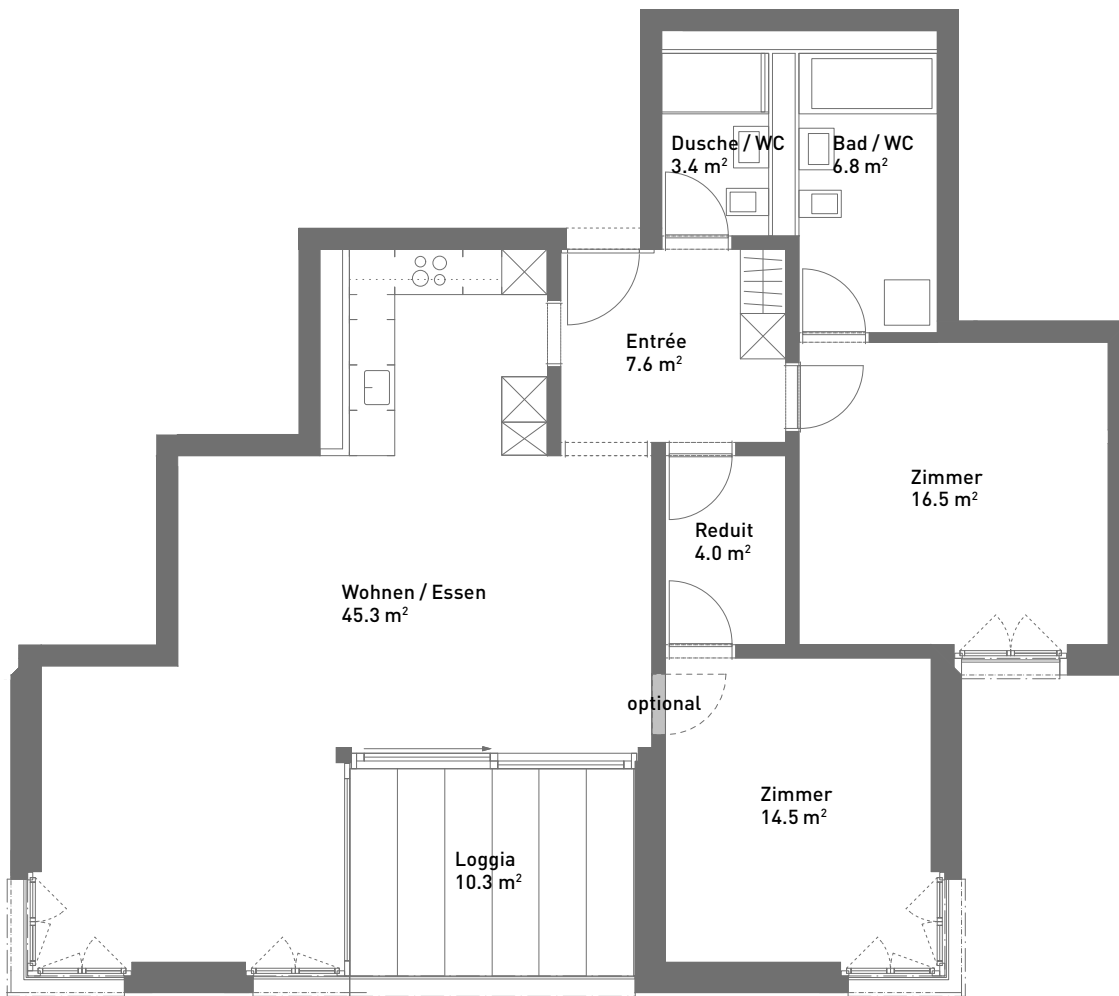
# 4.5-Zimmer-Wohnung, ca. 116 m<sup>2</sup>

Masstab 1:100 (Format A4)



Spiserstrasse 10	Wohnung Nr. 10.302
3. Obergeschoss	
Aussenflächen	ca. 10 m <sup>2</sup>
Keller	ca. 8 m <sup>2</sup>



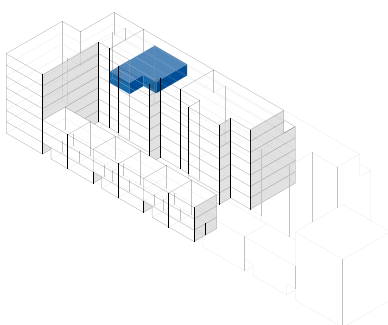
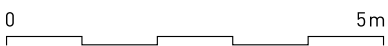
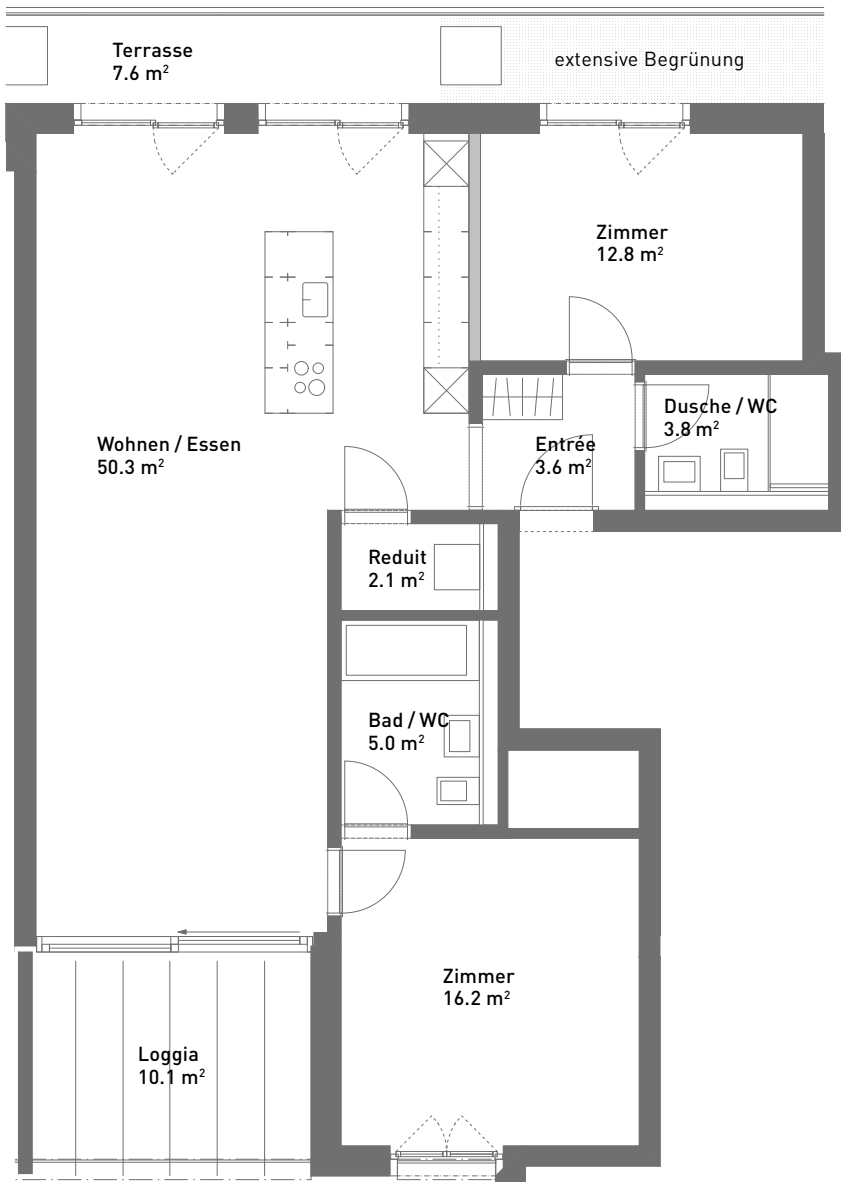


Spiserstrasse 10	Wohnung Nr. 10.303
3. Obergeschoss	
Aussenflächen	ca. 10 m <sup>2</sup>
Keller	ca. 8 m <sup>2</sup>
Nicht tragende Wand	■



# 3.5-Zimmer-Wohnung, ca. 93 m<sup>2</sup>

Masstab 1:100 (Format A4)

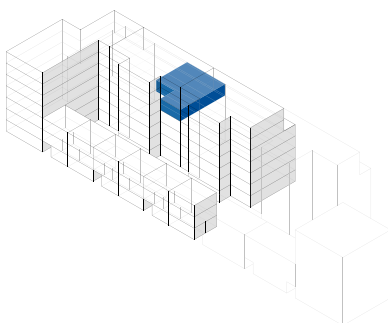
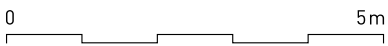
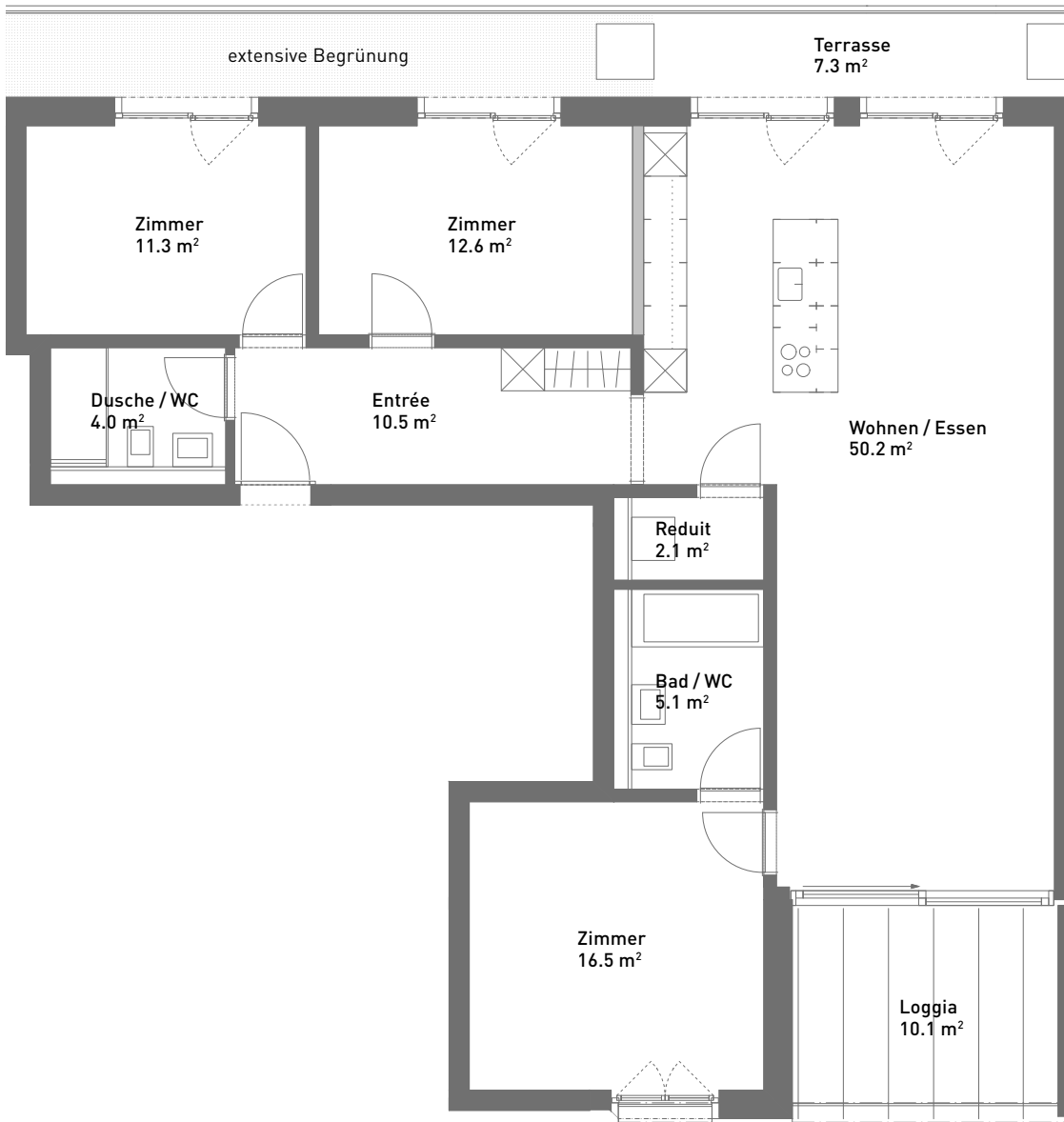


Spiserstrasse 10	Wohnung Nr. 10.401
4. Obergeschoss	
Aussenflächen	ca. 17 m <sup>2</sup>
Keller	ca. 8 m <sup>2</sup>
Nicht tragende Wand	■



# 4.5-Zimmer-Wohnung, ca. 112 m<sup>2</sup>

Masstab 1:100 (Format A4)



Spiserstrasse 10

Wohnung Nr. 10.402

4. Obergeschoss

Aussenflächen ca. 17 m<sup>2</sup>

Keller ca. 8 m<sup>2</sup>

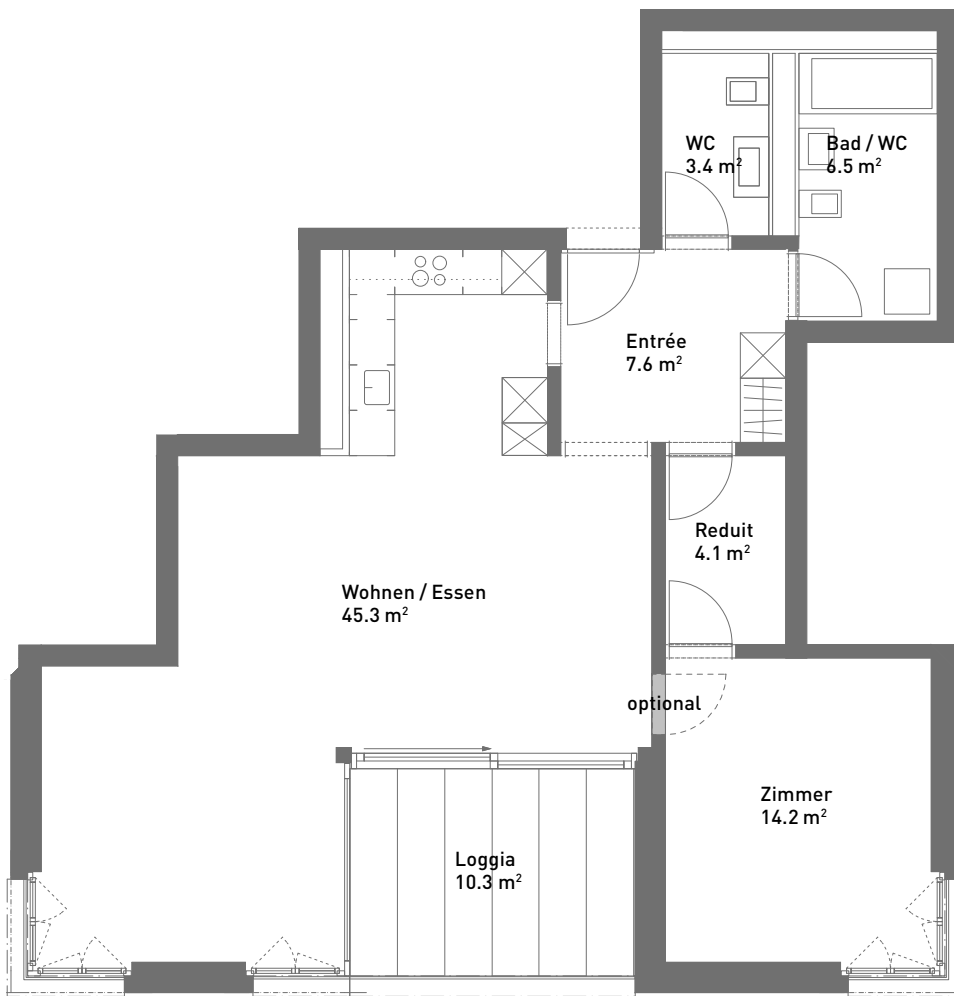
Nicht tragende Wand



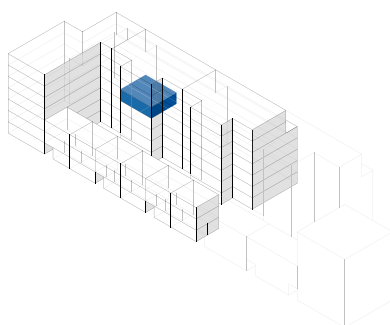
Spiserstrasse, Zürich

# 2.5-Zimmer-Wohnung, ca. 81 m<sup>2</sup>

Masstab 1:100 (Format A4)



0 5m



Spiserstrasse 10

Wohnung Nr. 10.403

4. Obergeschoss

Aussenflächen

ca. 10 m<sup>2</sup>

Keller

ca. 5 m<sup>2</sup>

Nicht tragende Wand



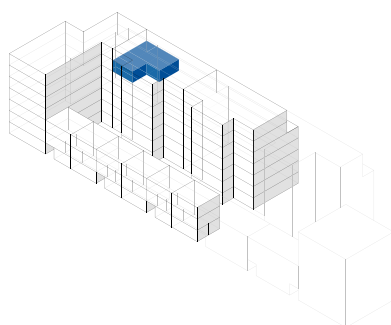
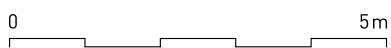
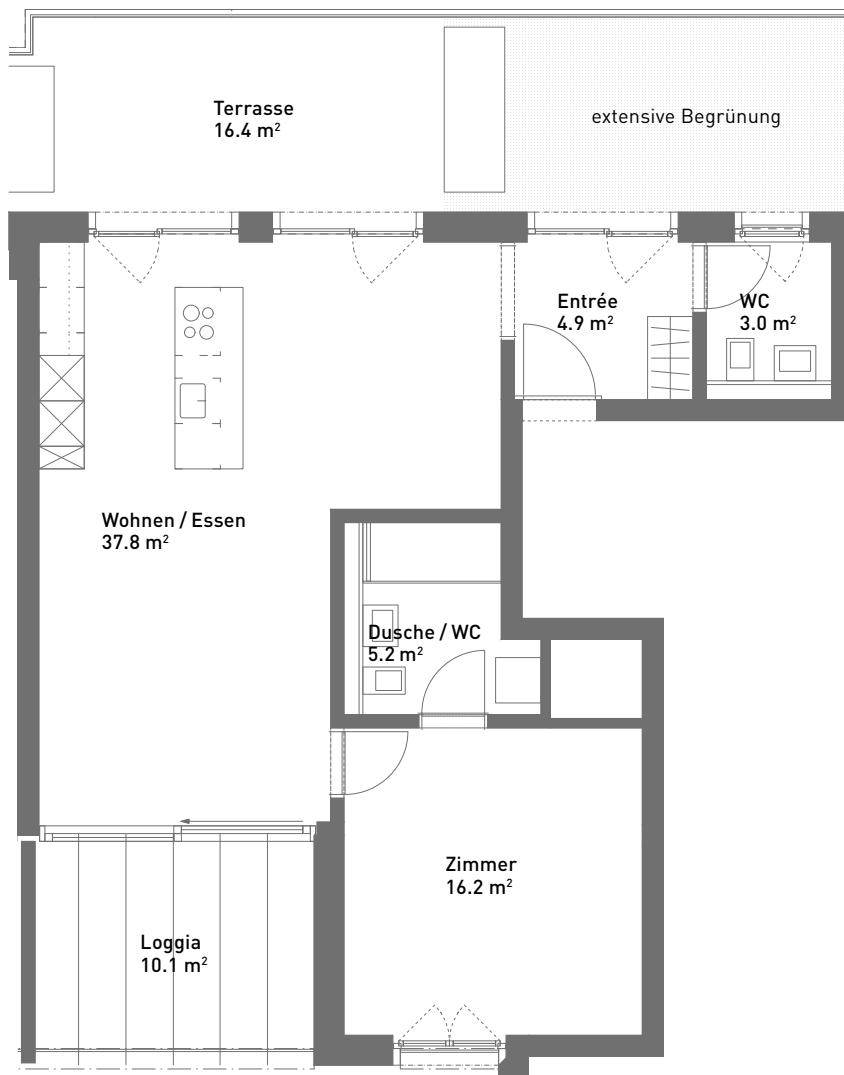
Spiserstrasse, Zürich

40



# 2.5-Zimmer-Wohnung, ca. 67 m<sup>2</sup>

Massstab 1:100 (Format A4)



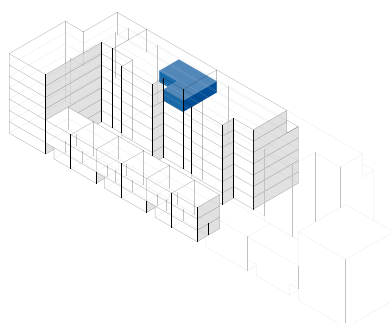
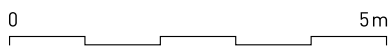
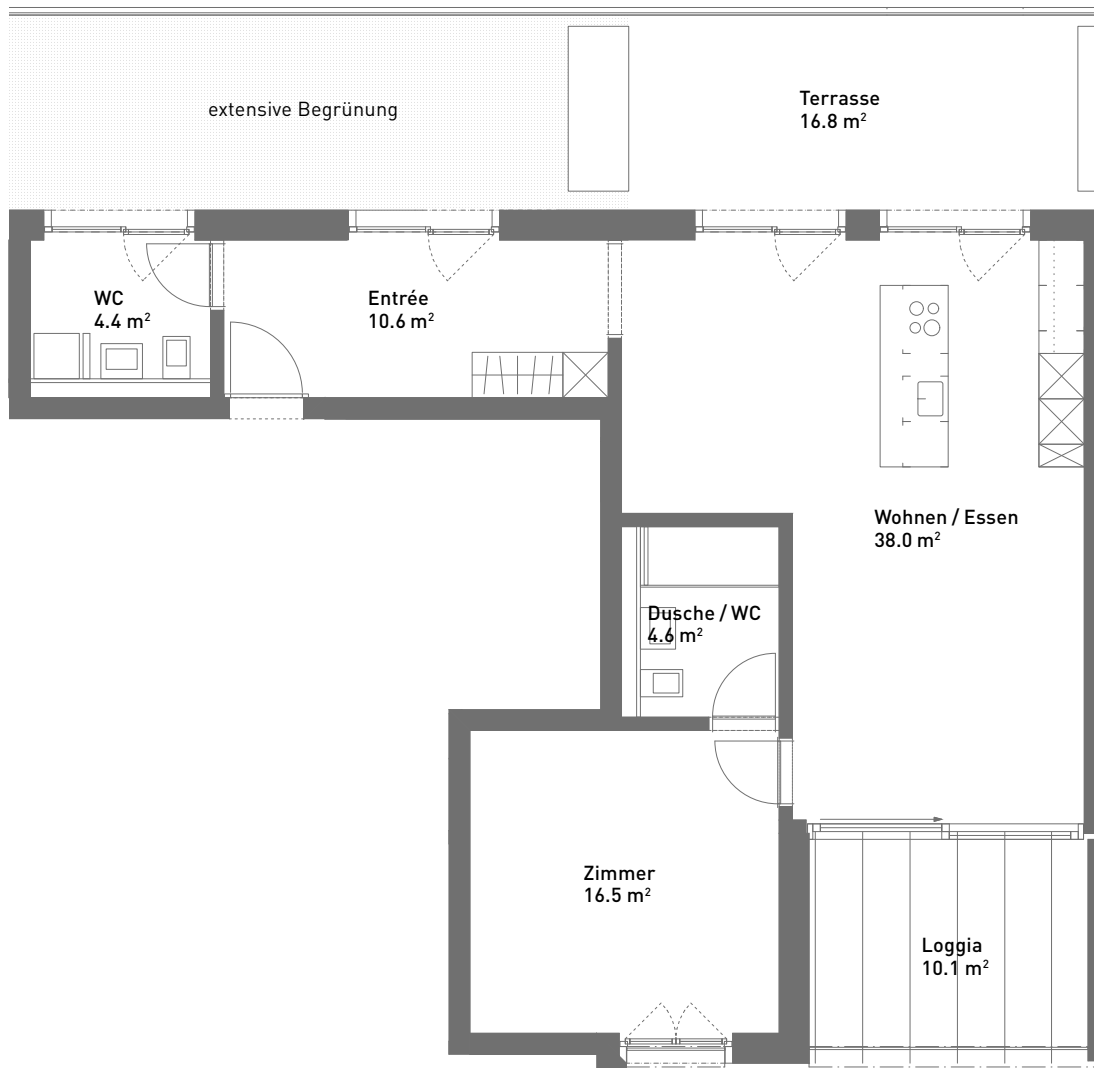
Spiserstrasse 10	Wohnung Nr. 10.501
5. Obergeschoss	
Aussenflächen	ca. 26 m <sup>2</sup>
Keller	ca. 6 m <sup>2</sup>



Spiserstrasse, Zürich

# 2.5-Zimmer-Wohnung, ca. 74 m<sup>2</sup>

Massstab 1:100 (Format A4)



Spiserstrasse 10

Wohnung Nr. 10.502

5. Obergeschoss

Aussenflächen

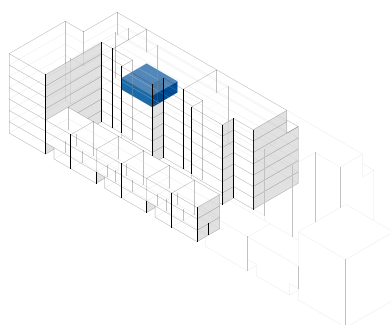
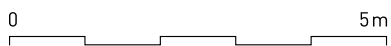
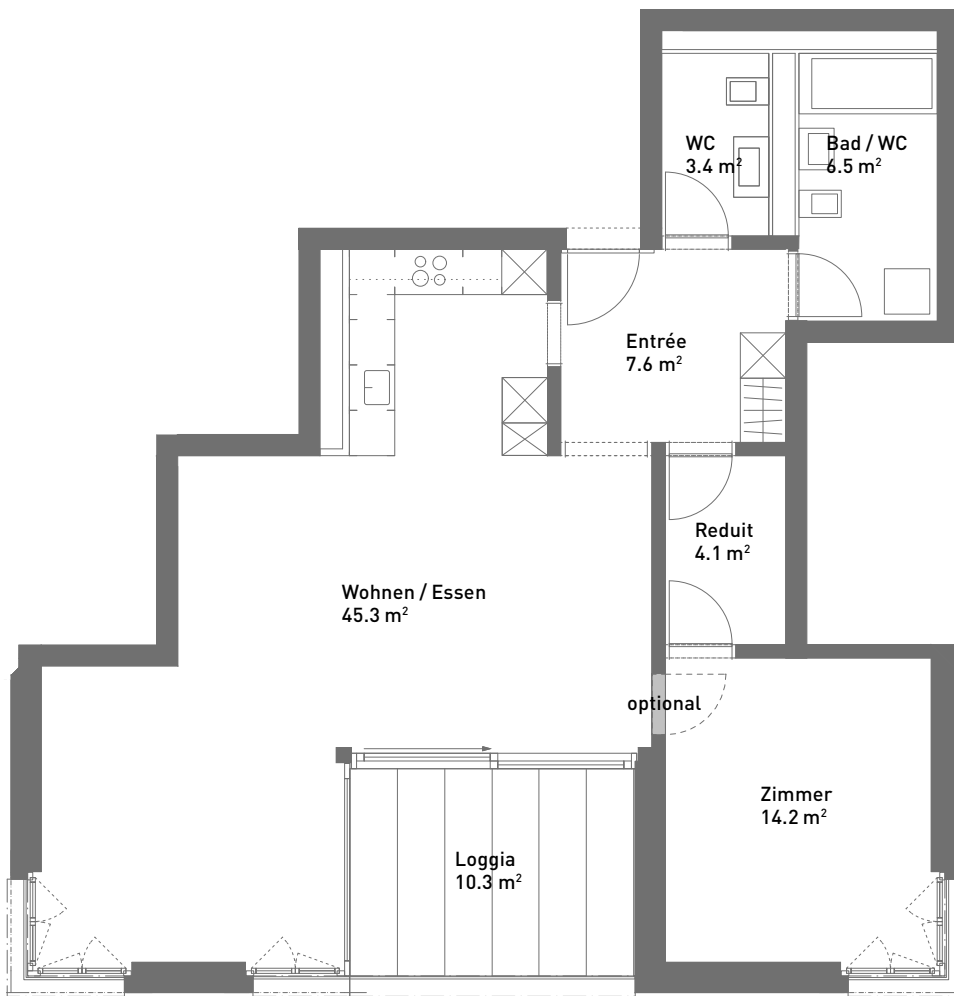
ca. 26 m<sup>2</sup>

Keller

ca. 5 m<sup>2</sup>



Spiserstrasse, Zürich

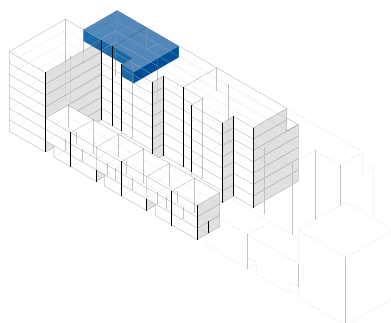
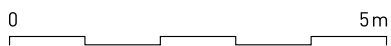
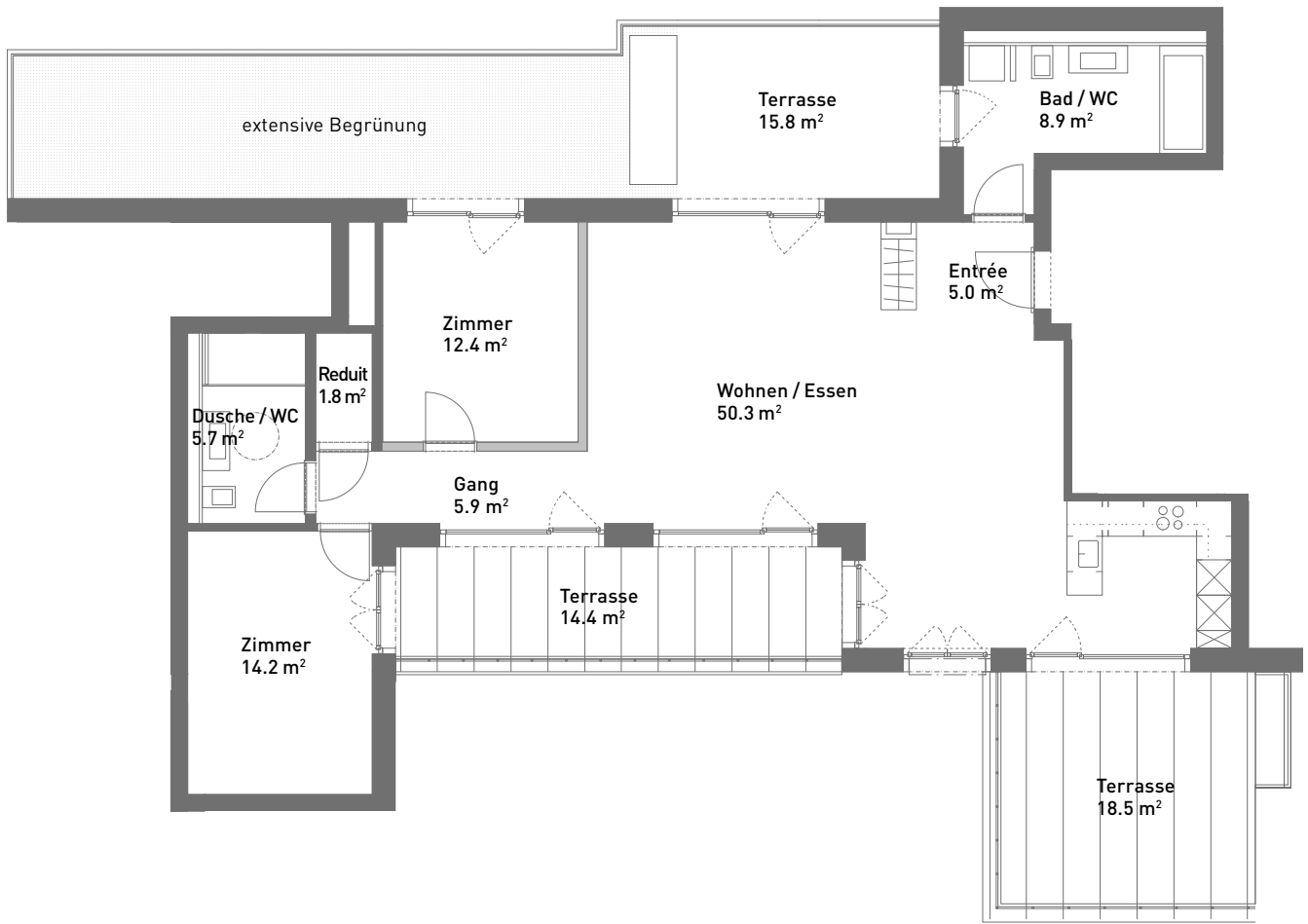


Spiserstrasse 10	Wohnung Nr. 10.503
5. Obergeschoss	
Aussenflächen	ca. 10 m <sup>2</sup>
Keller	ca. 6 m <sup>2</sup>
Nicht tragende Wand	



# 3.5-Zimmer-Attika-Wohnung, ca. 104 m<sup>2</sup>

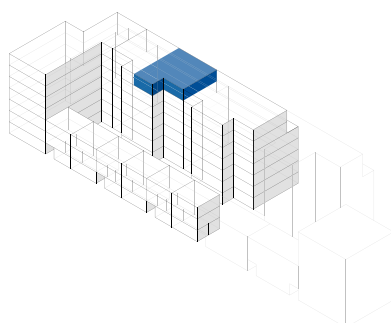
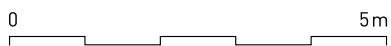
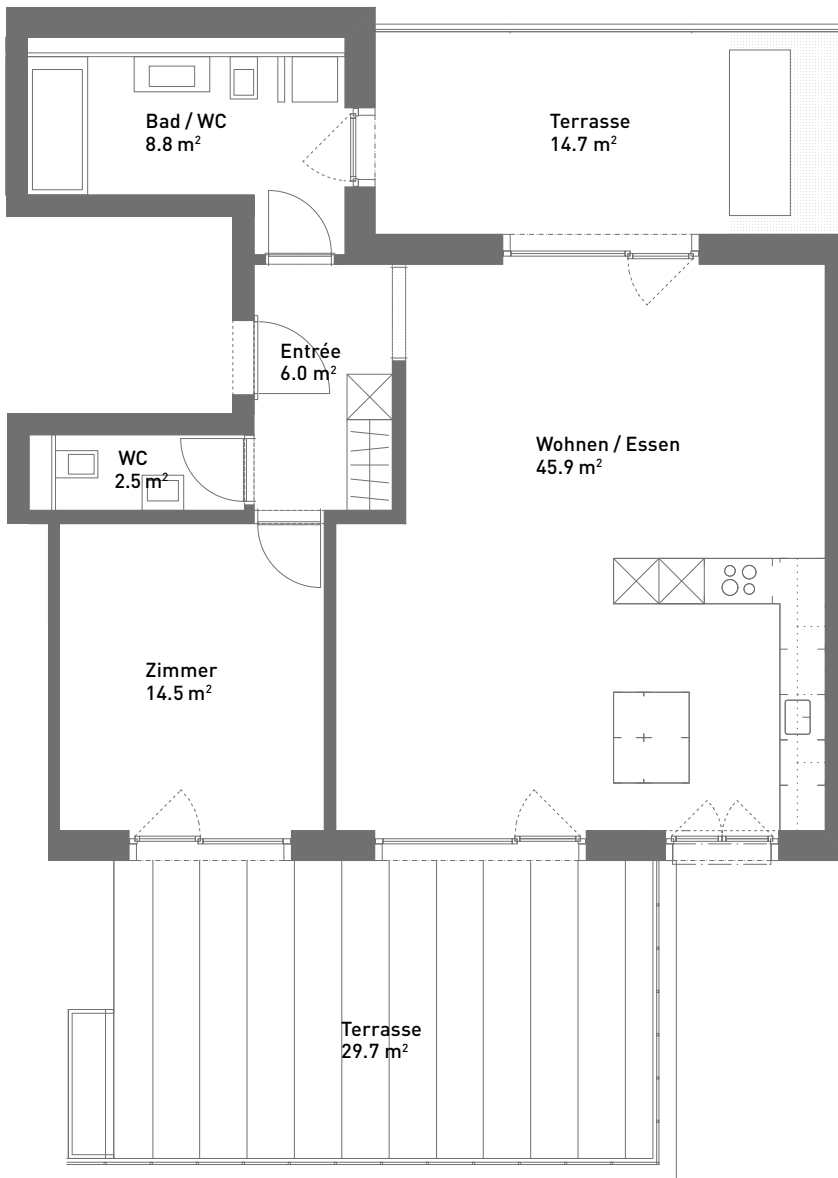
Masstab 1:125 (Format A4)



Spiserstrasse 10	Wohnung Nr. 10.601
Attika	
Aussenflächen	ca. 48 m <sup>2</sup>
Keller	ca. 8 m <sup>2</sup>
Nicht tragende Wand	■

# 2.5-Zimmer-Attika-Wohnung, ca. 77 m<sup>2</sup>

Masstab 1:100 (Format A4)

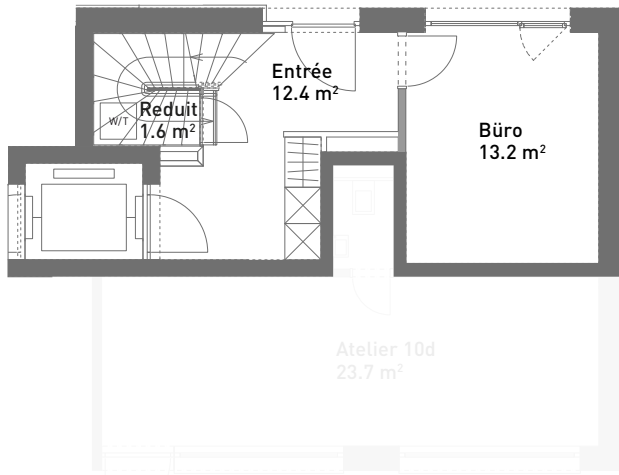


Spiserstrasse 10	Wohnung Nr. 10.602
Attika	
Aussenflächen	ca. 44 m <sup>2</sup>
Keller	ca. 6 m <sup>2</sup>

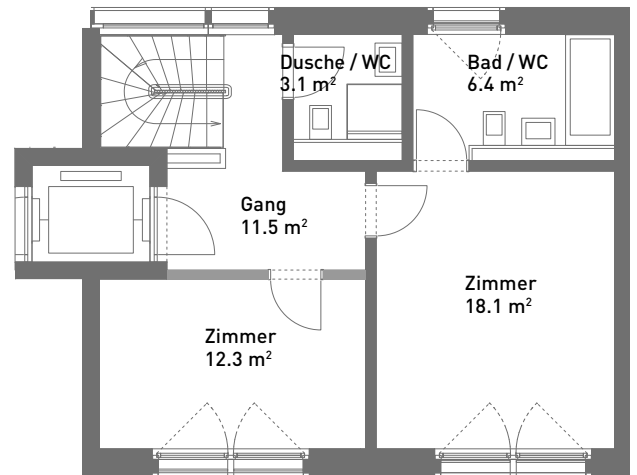


# 4.5-Zimmer-Townhouse, ca. 120 m<sup>2</sup>

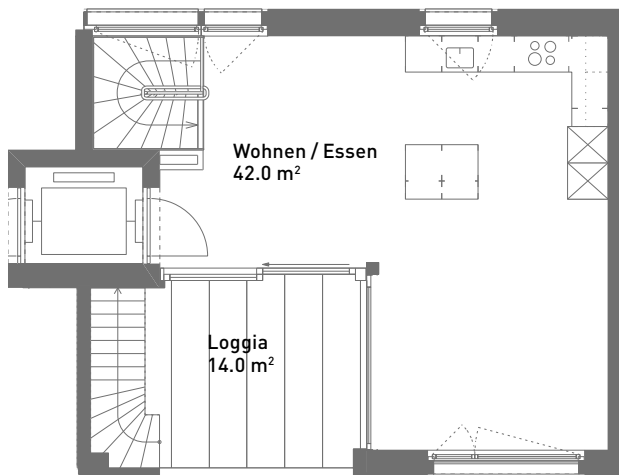
Masstab 1:125 (Format A4)



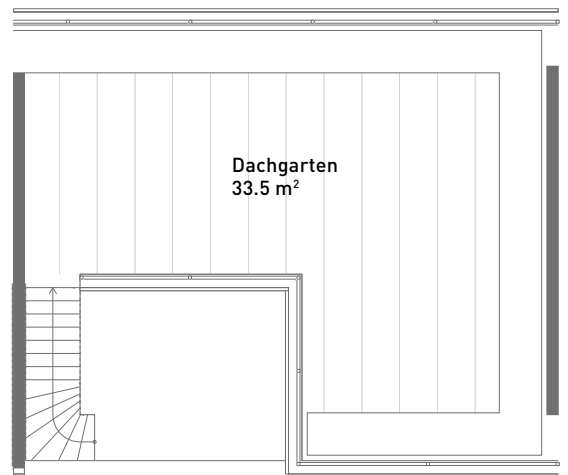
Erdgeschoss



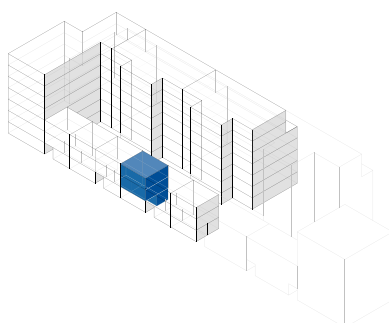
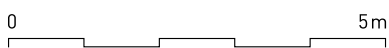
1. Obergeschoss



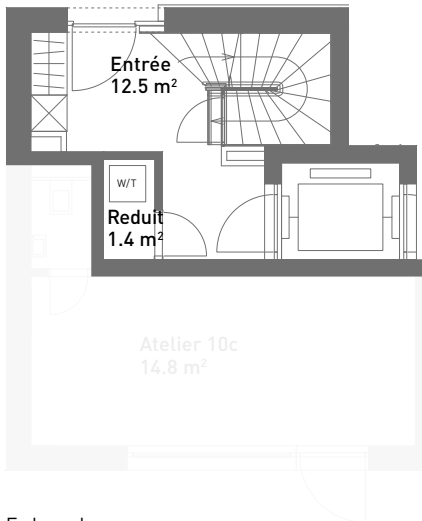
2. Obergeschoss



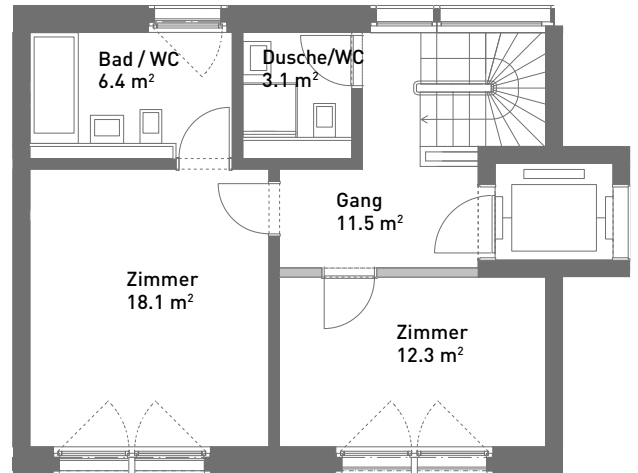
3. Obergeschoss



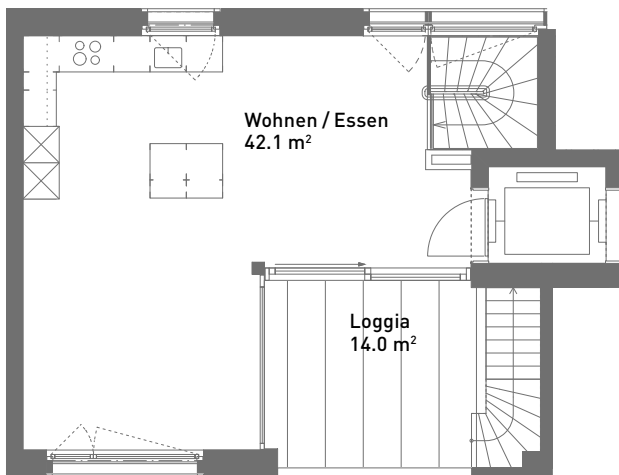
Spiserstrasse 10a	Townhouse Nr. 10a.1
Erdgeschoss–2. Obergeschoss	
Aussenflächen	ca. 47 m <sup>2</sup>
Keller	ca. 8 m <sup>2</sup>
Nicht tragende Wand	■



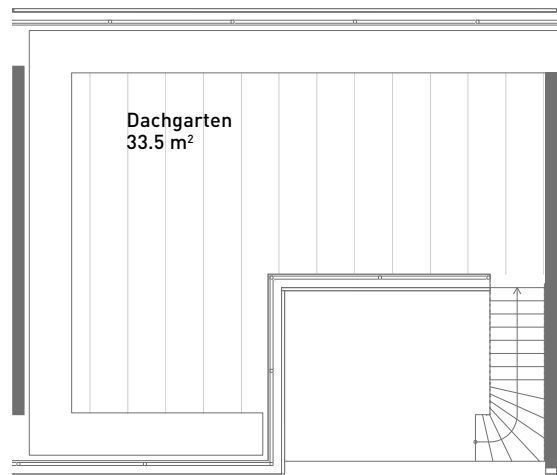
Erdgeschoss



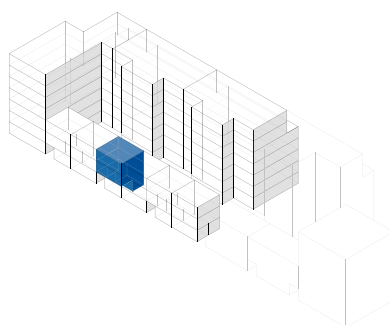
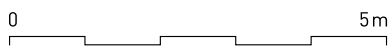
1. Obergeschoss



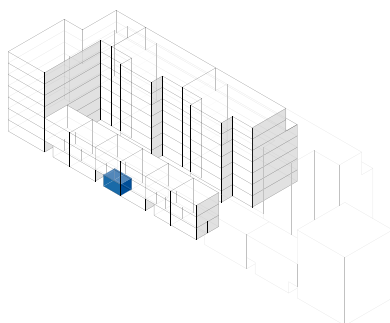
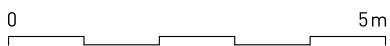
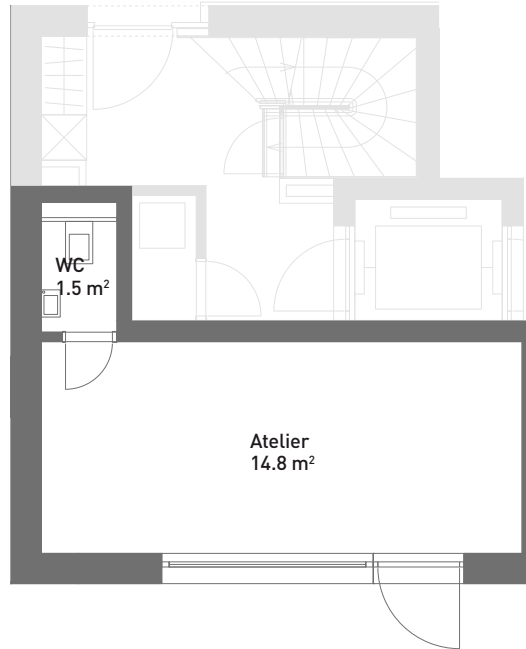
2. Obergeschoss



3. Obergeschoss



Spiserstrasse 10b	Townhouse Nr. 10b.2
Erdgeschoss–2. Obergeschoss	
Aussenflächen	ca. 47 m <sup>2</sup>
Keller	ca. 8 m <sup>2</sup>
Nicht tragende Wand	■



Spiserstrasse 10c

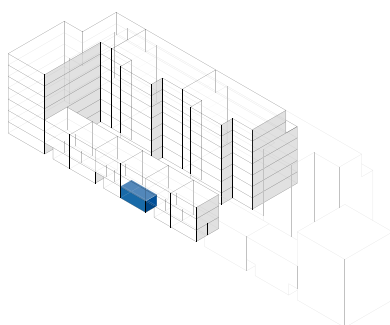
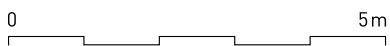
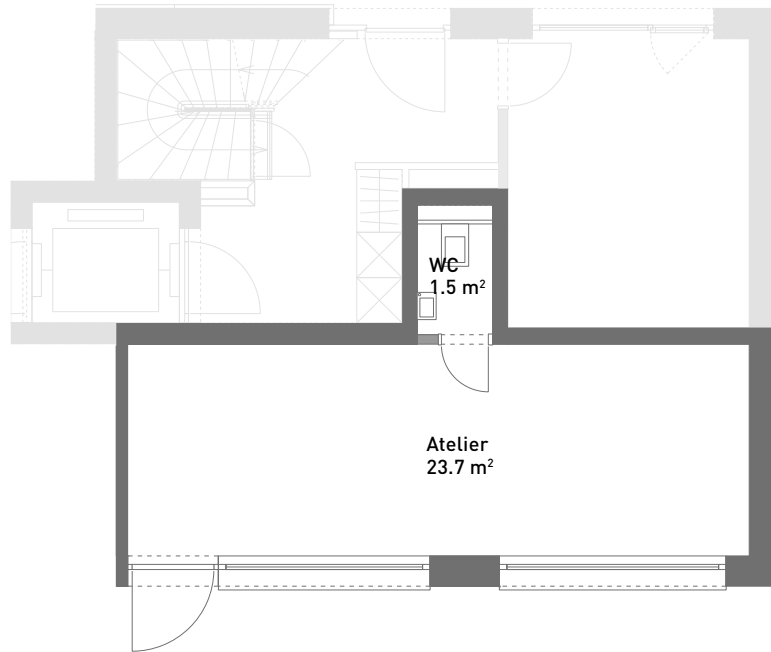
Atelier Nr. 10c

Erdgeschoss



Spiserstrasse, Zürich



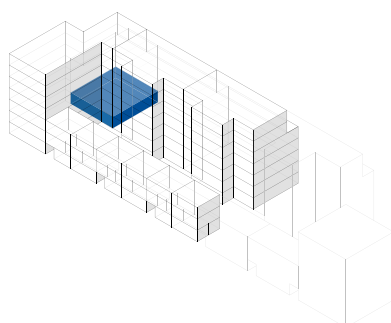
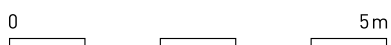


Spiserstrasse 10d

Atelier Nr. 10d

Erdgeschoss



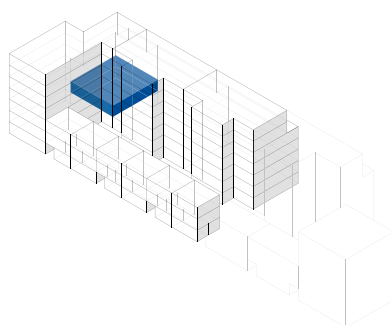
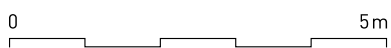
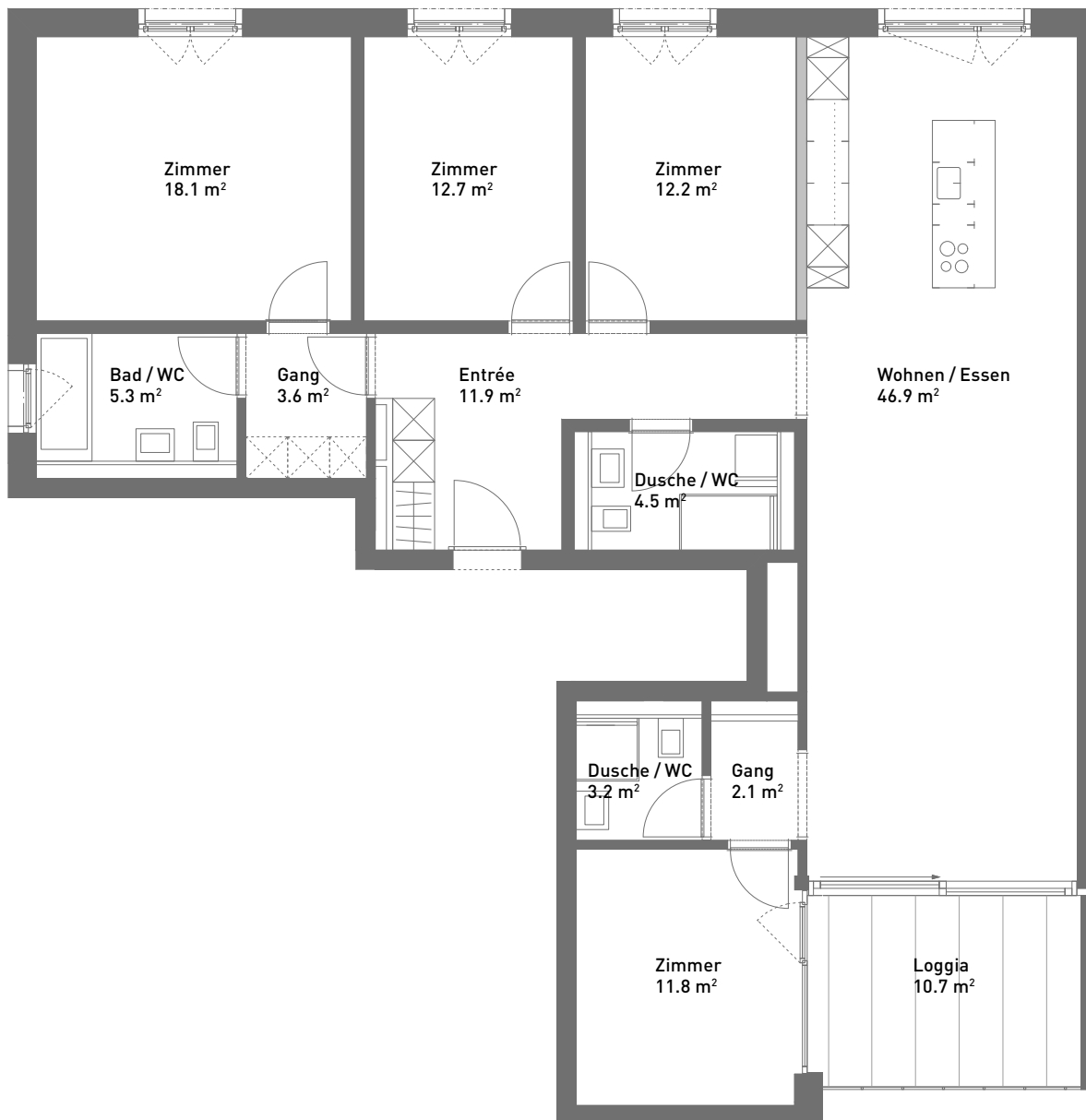


Spiserstrasse 12	Wohnung Nr. 12.1
Erdgeschoss	
Aussenflächen	ca. 23 m <sup>2</sup>
Keller	ca. 9 m <sup>2</sup>
Nicht tragende Wand	■



# 5.5-Zimmer-Wohnung, ca. 132 m<sup>2</sup>

Massstab 1:100 (Format A4)

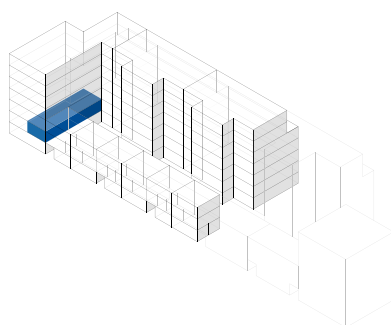
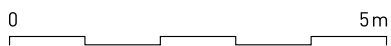
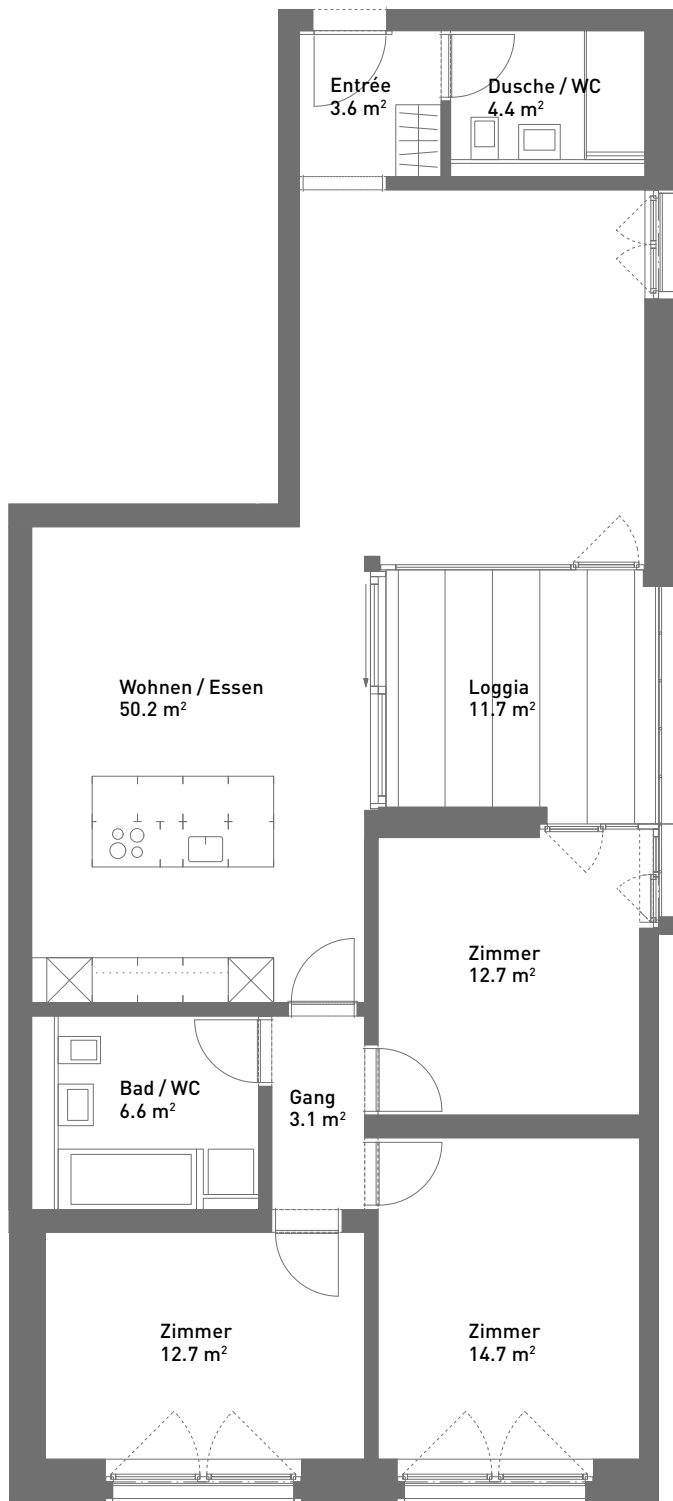


Spiserstrasse 12	Wohnung Nr. 12.101
1. Obergeschoss	
Aussenflächen	ca. 10 m <sup>2</sup>
Keller	ca. 8 m <sup>2</sup>
Nicht tragende Wand	■

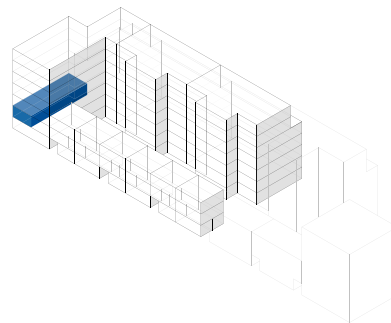
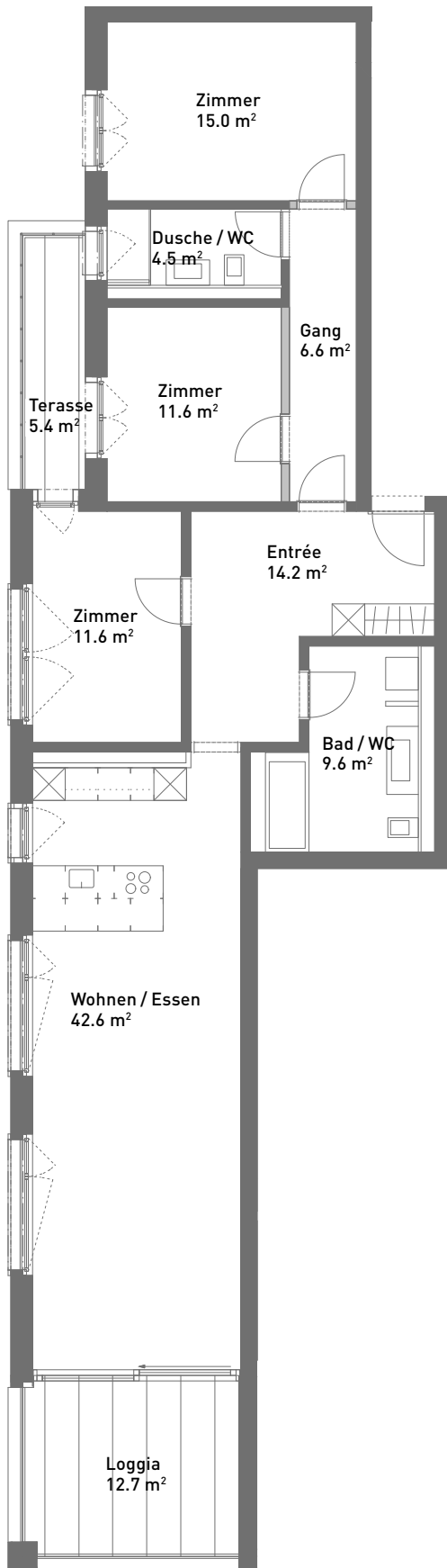


# 4.5-Zimmer-Wohnung, ca. 108 m<sup>2</sup>

Masstab 1:100 (Format A4)



Spiserstrasse 12	Wohnung Nr. 12.102
1. Obergeschoss	
Aussenflächen	ca. 11 m <sup>2</sup>
Keller	ca. 8 m <sup>2</sup>

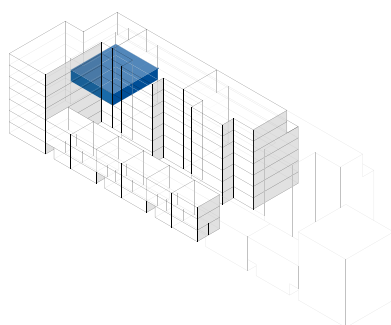
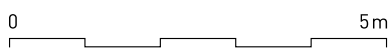
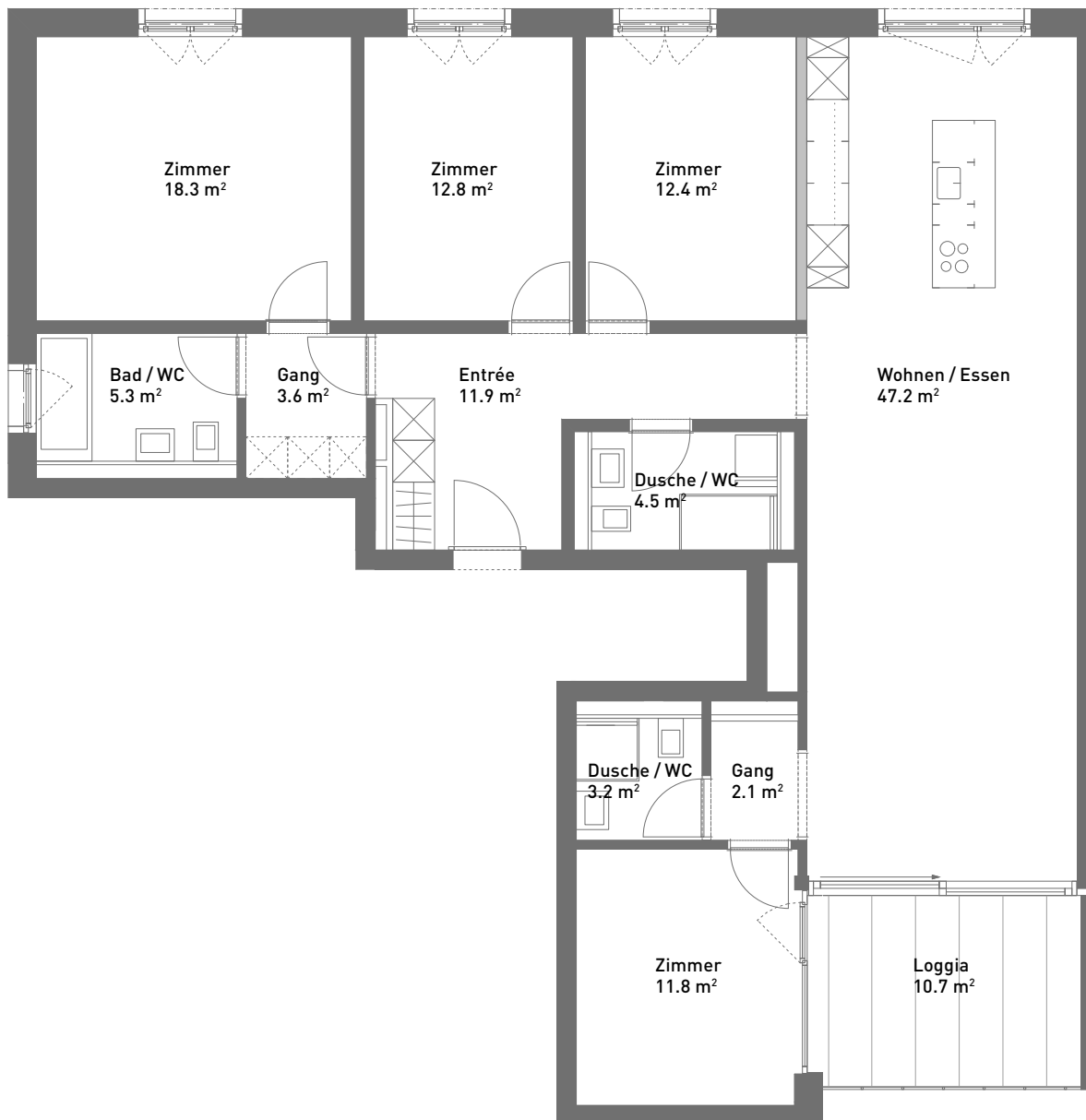


Spiserstrasse 12	Wohnung Nr. 12.103
1. Obergeschoss	
Aussenflächen	ca. 18 m <sup>2</sup>
Keller	ca. 8 m <sup>2</sup>
Nicht tragende Wand	■



# 5.5-Zimmer-Wohnung, ca. 133 m<sup>2</sup>

Massstab 1:100 (Format A4)

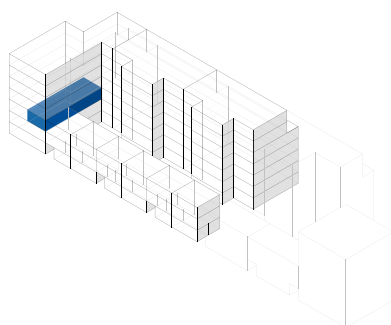
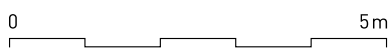
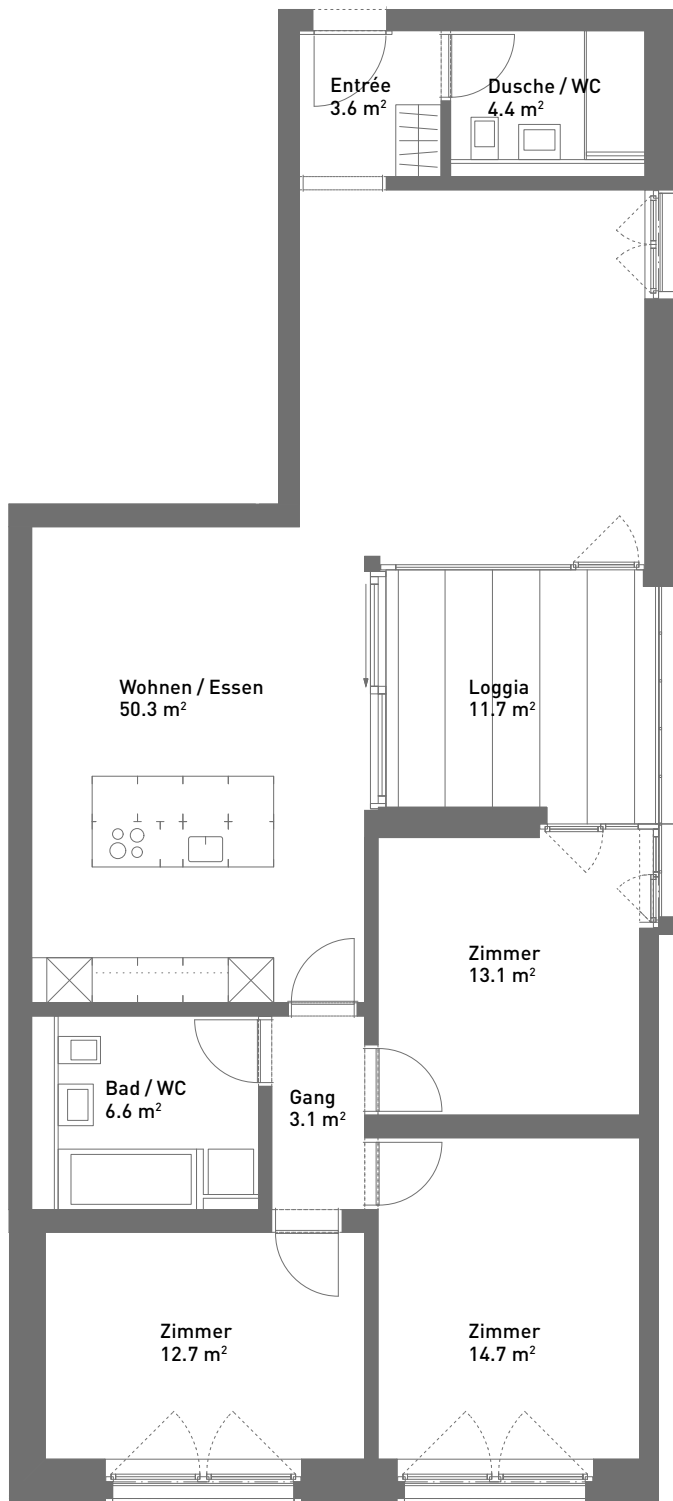


Spiserstrasse 12	Wohnung Nr. 12.201
2. Obergeschoss	
Aussenflächen	ca. 10 m <sup>2</sup>
Keller	ca. 8 m <sup>2</sup>
Nicht tragende Wand	■

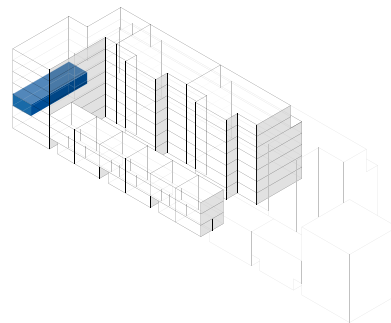
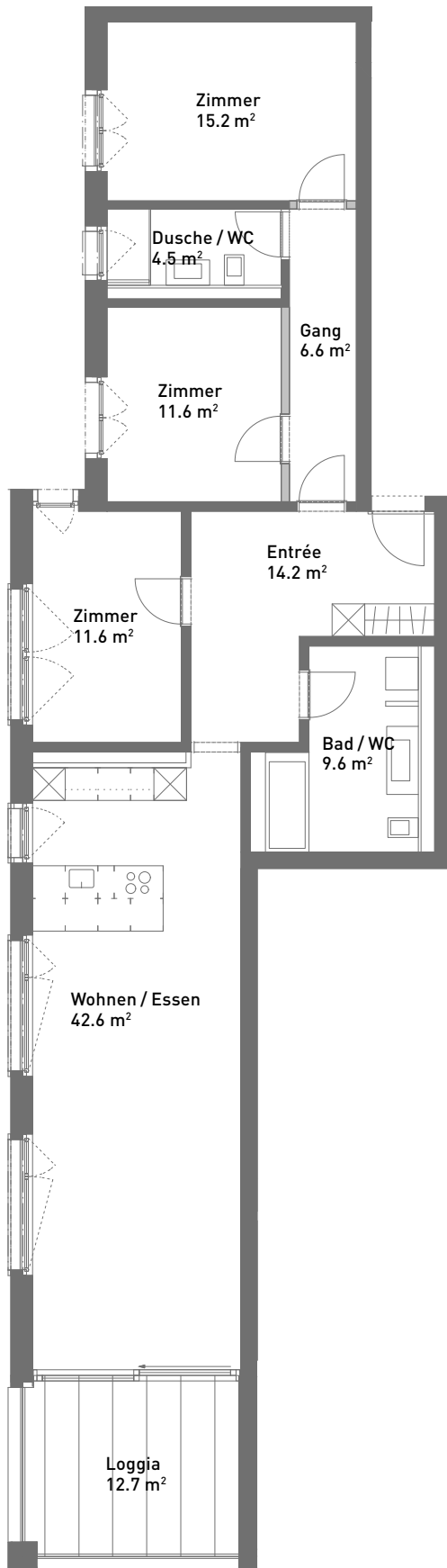


# 4.5-Zimmer-Wohnung, ca. 108 m<sup>2</sup>

Masstab 1:100 (Format A4)



Spiserstrasse 12	Wohnung Nr. 12.202
2. Obergeschoss	
Aussenflächen	ca. 11 m <sup>2</sup>
Keller	ca. 8 m <sup>2</sup>



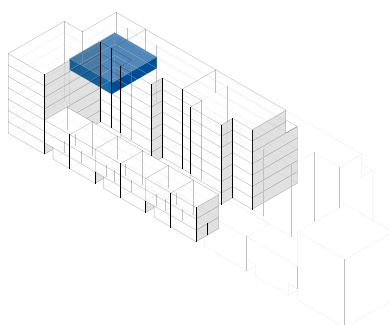
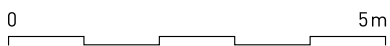
Spiserstrasse 12	Wohnung Nr. 12.203
2. Obergeschoss	
Aussenflächen	ca. 12 m <sup>2</sup>
Keller	ca. 8 m <sup>2</sup>
Nicht tragende Wand	■





# 5.5-Zimmer-Wohnung, ca. 133 m<sup>2</sup>

Massstab 1:100 (Format A4)

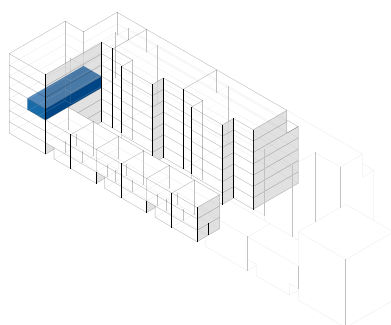
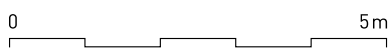
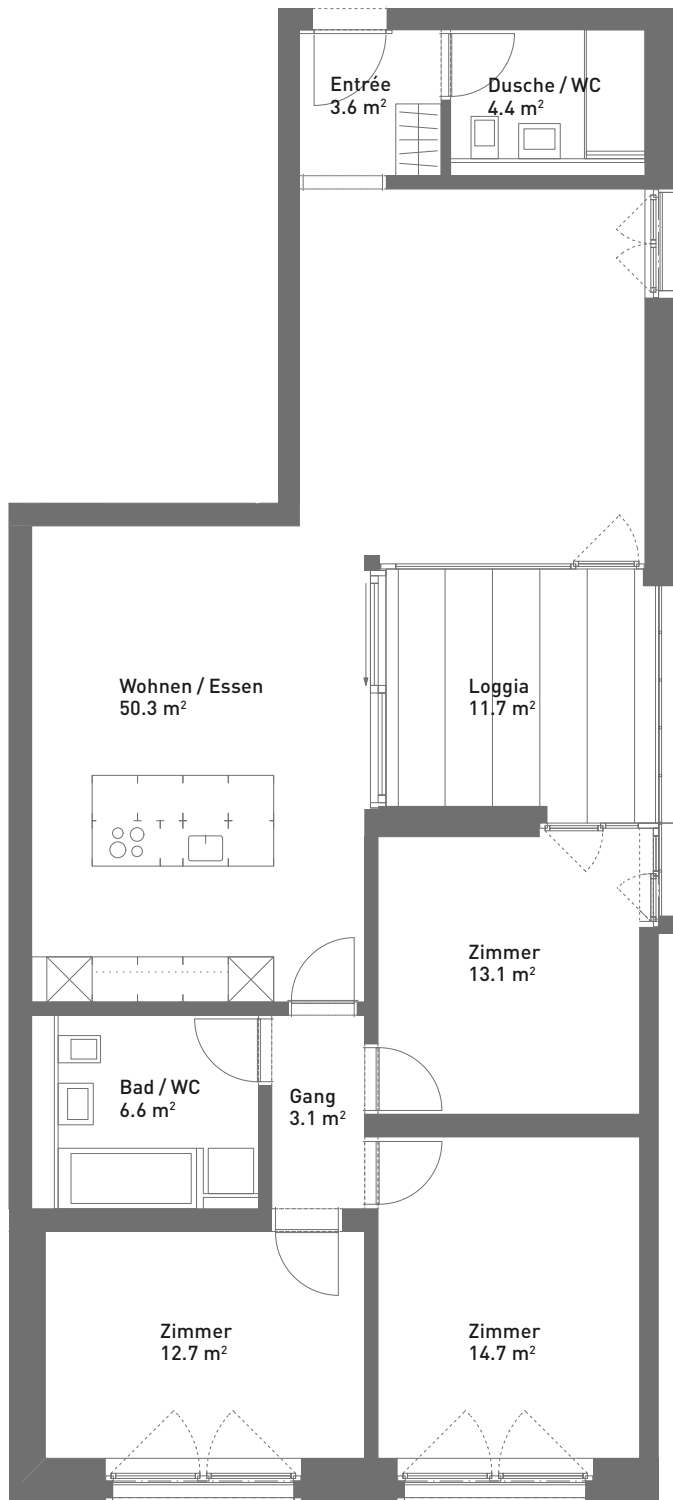


Spiserstrasse 12	Wohnung Nr. 12.301
3. Obergeschoss	
Aussenflächen	ca. 10 m <sup>2</sup>
Keller	ca. 8 m <sup>2</sup>
Nicht tragende Wand	■

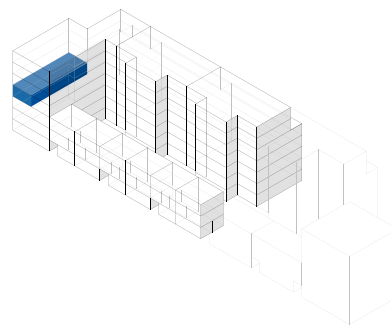
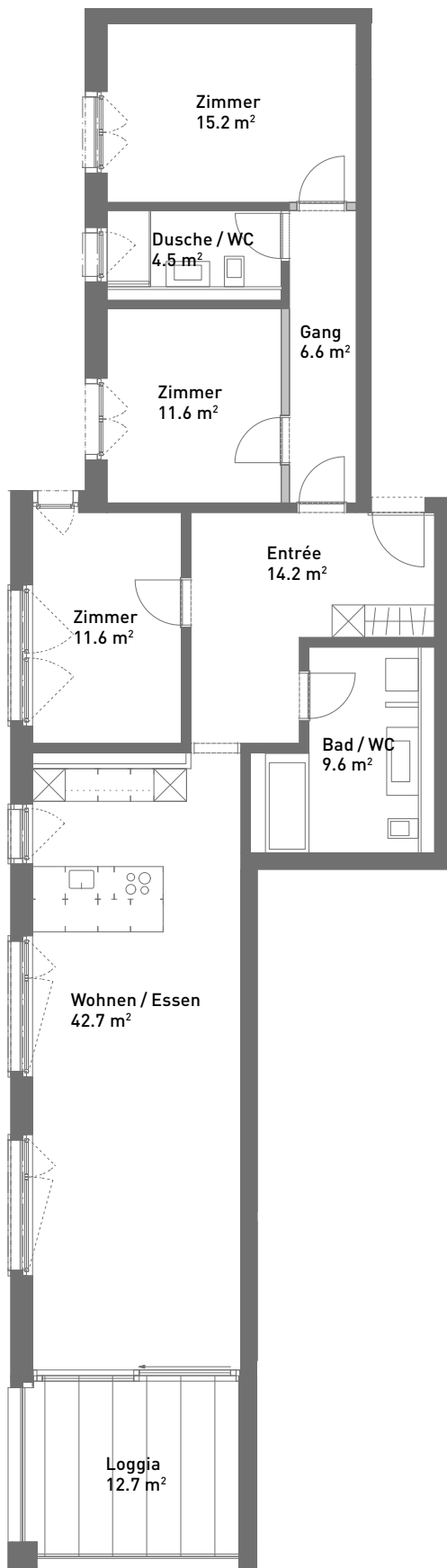


# 4.5-Zimmer-Wohnung, ca. 108 m<sup>2</sup>

Masstab 1:100 (Format A4)



Spiserstrasse 12	Wohnung Nr. 12.302
3. Obergeschoss	
Aussenflächen	ca. 11 m <sup>2</sup>
Keller	ca. 8 m <sup>2</sup>

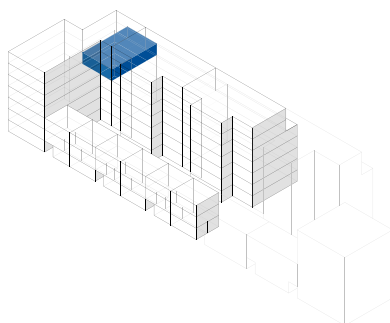
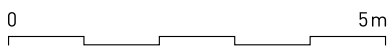
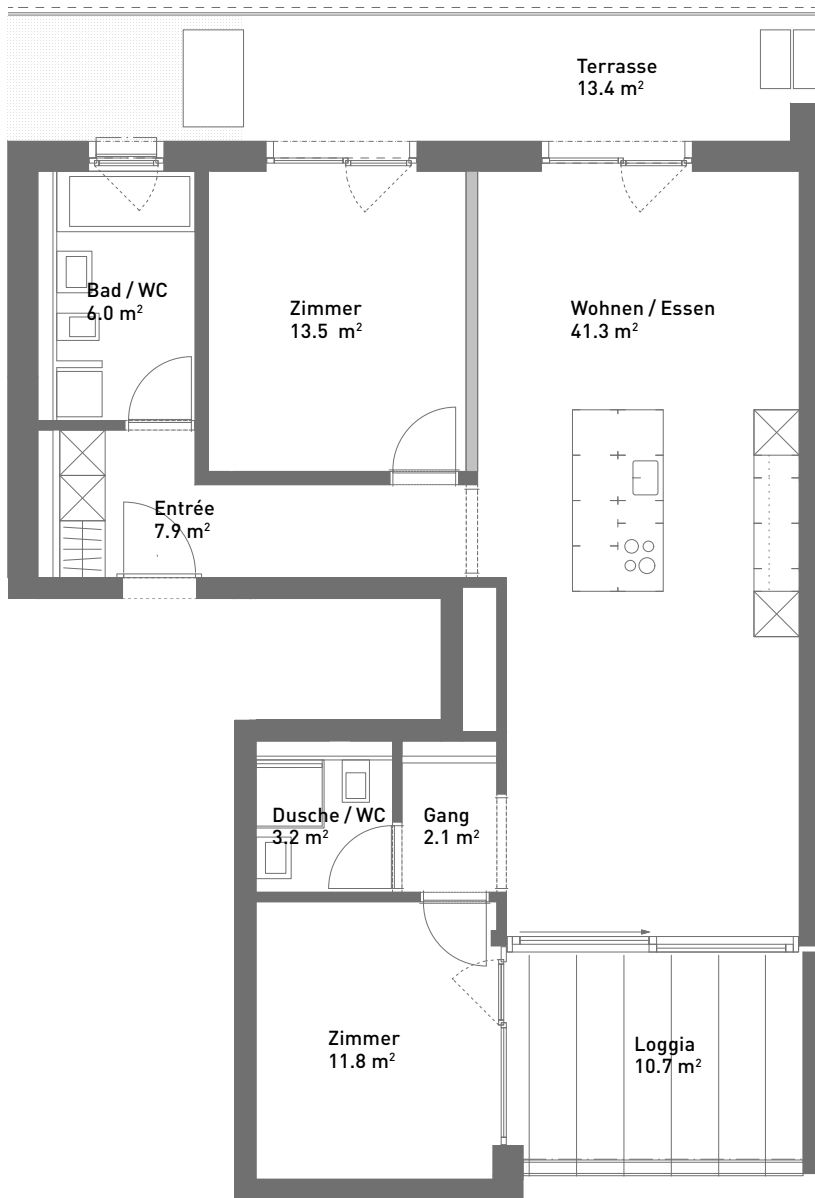


Spiserstrasse 12	Wohnung Nr. 12.303
3. Obergeschoss	
Aussenflächen	ca. 12 m <sup>2</sup>
Keller	ca. 8 m <sup>2</sup>
Nicht tragende Wand	■



# 3.5-Zimmer-Wohnung, ca. 85 m<sup>2</sup>

Masstab 1:100 (Format A4)

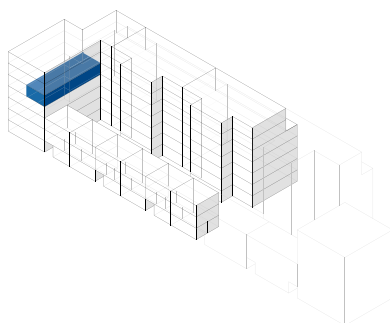
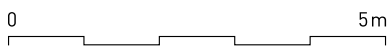
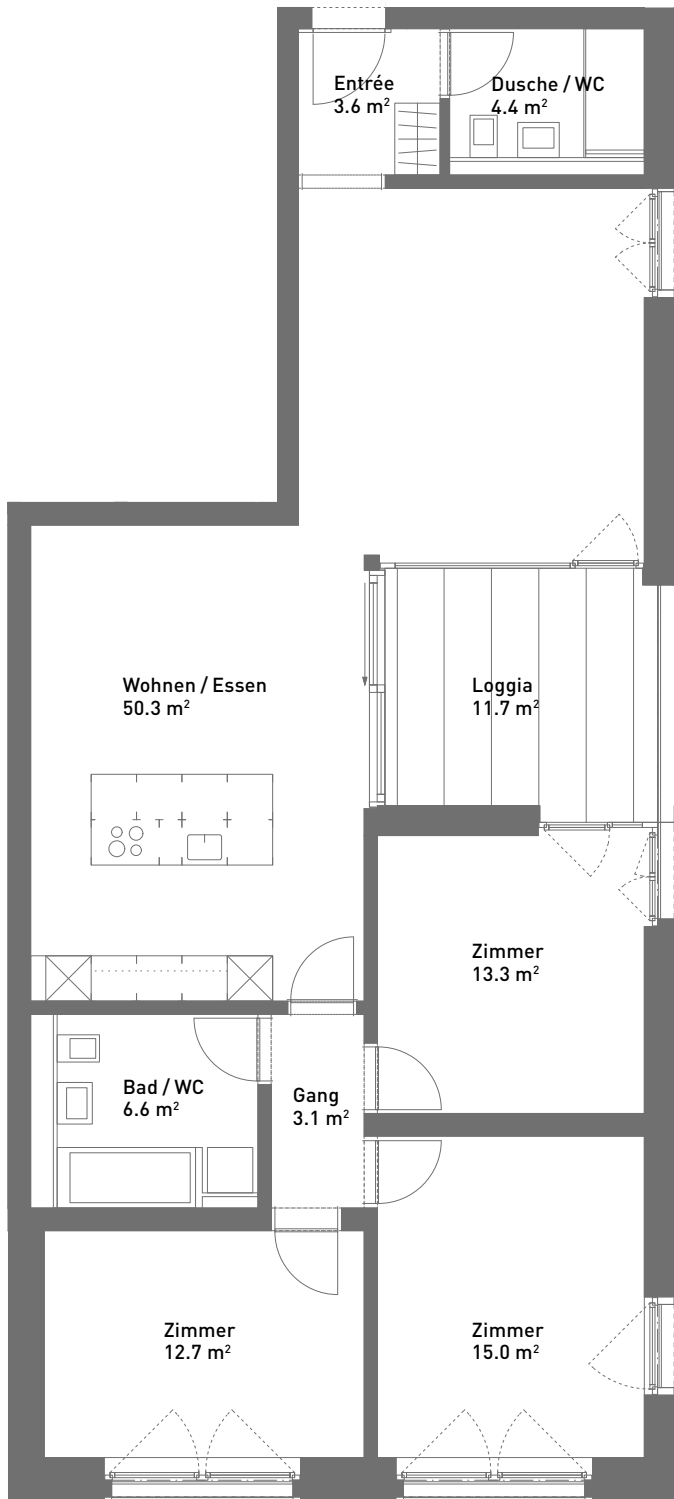


Spiserstrasse 12	Wohnung Nr. 12.401
4. Obergeschoss	
Aussenflächen	ca. 24 m <sup>2</sup>
Keller	ca. 8 m <sup>2</sup>
Nicht tragende Wand	■



# 4.5-Zimmer-Wohnung, ca. 109 m<sup>2</sup>

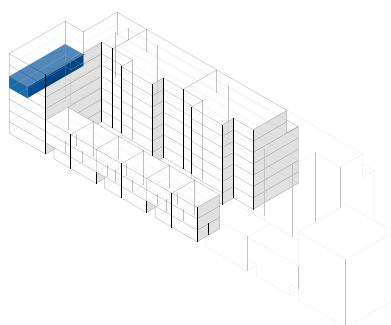
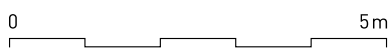
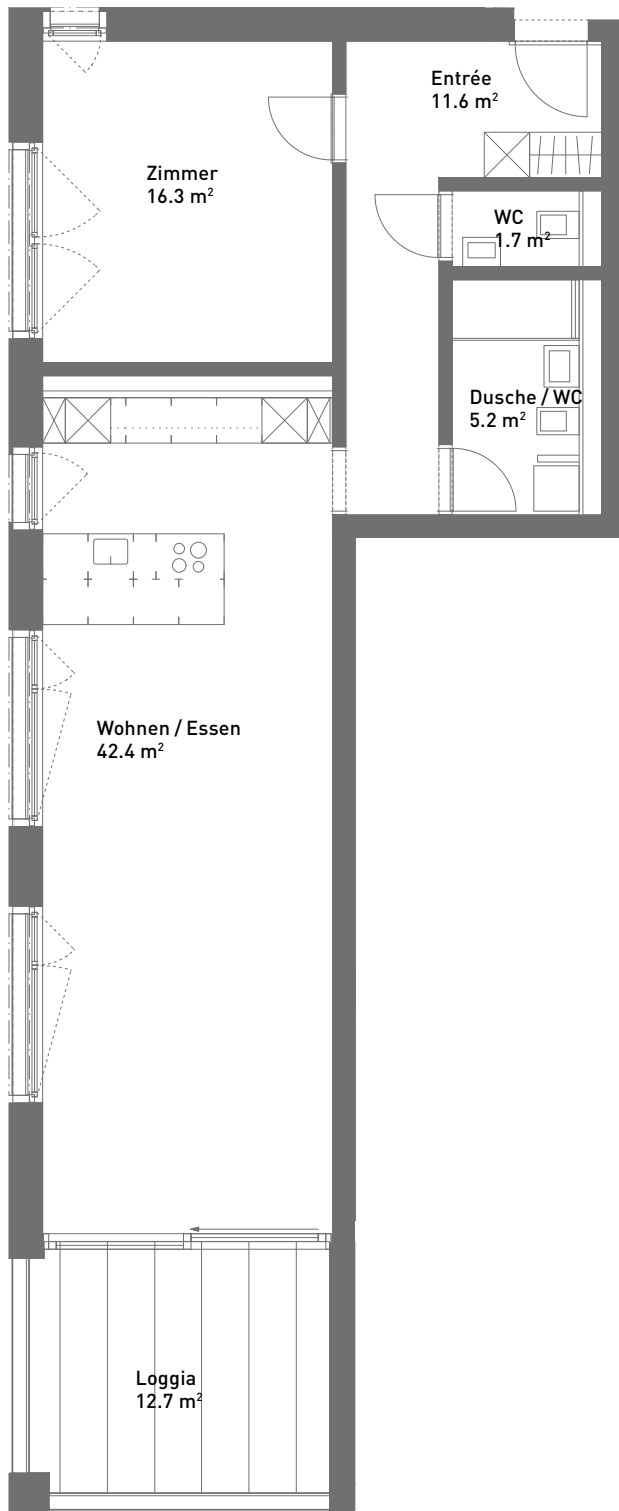
Masstab 1:100 (Format A4)



Spiserstrasse 12	Wohnung Nr. 12.402
4. Obergeschoss	
Aussenflächen	ca. 11 m <sup>2</sup>
Keller	ca. 8 m <sup>2</sup>

# 2.5-Zimmer-Wohnung, ca. 77 m<sup>2</sup>

Massstab 1:100 (Format A4)

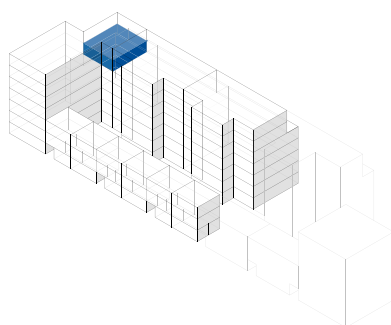
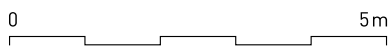
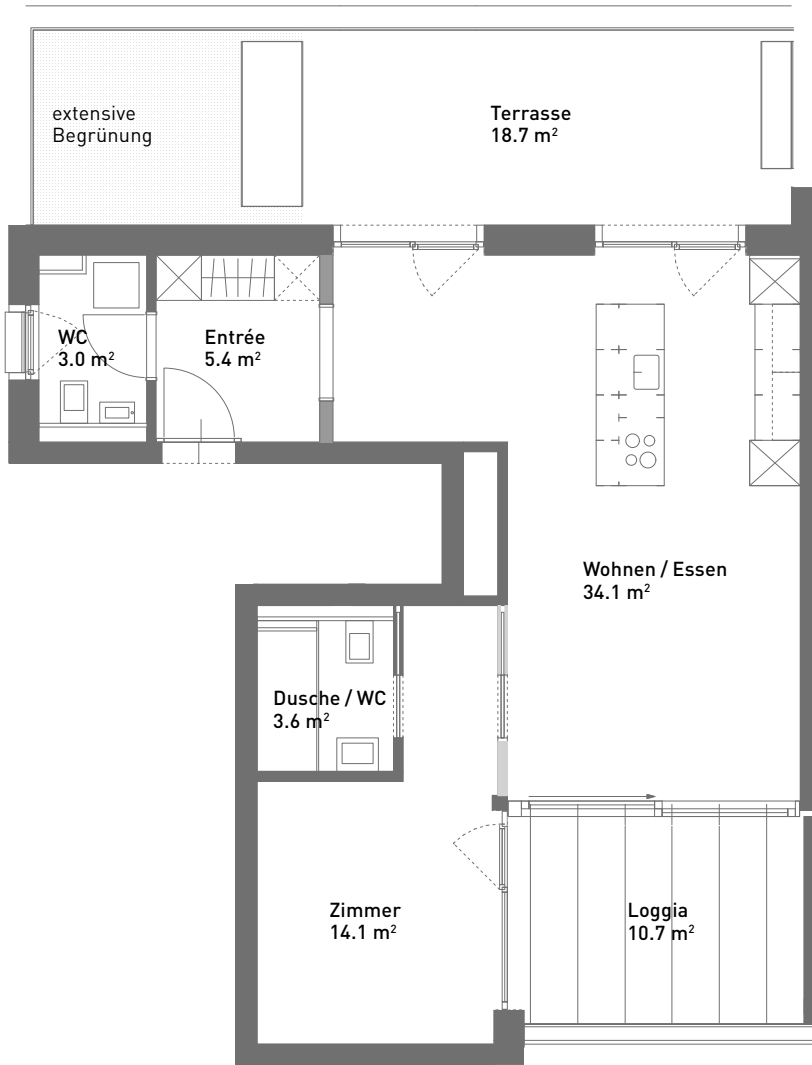


Spiserstrasse 12	Wohnung Nr. 12.403
4. Obergeschoss	
Aussenflächen	ca. 12 m <sup>2</sup>
Keller	ca. 5 m <sup>2</sup>



# 2.5-Zimmer-Wohnung, ca. 59 m<sup>2</sup>

Masstab 1:100 (Format A4)

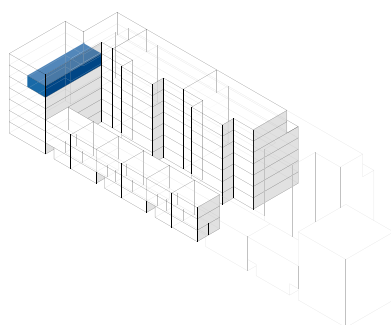
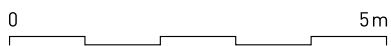
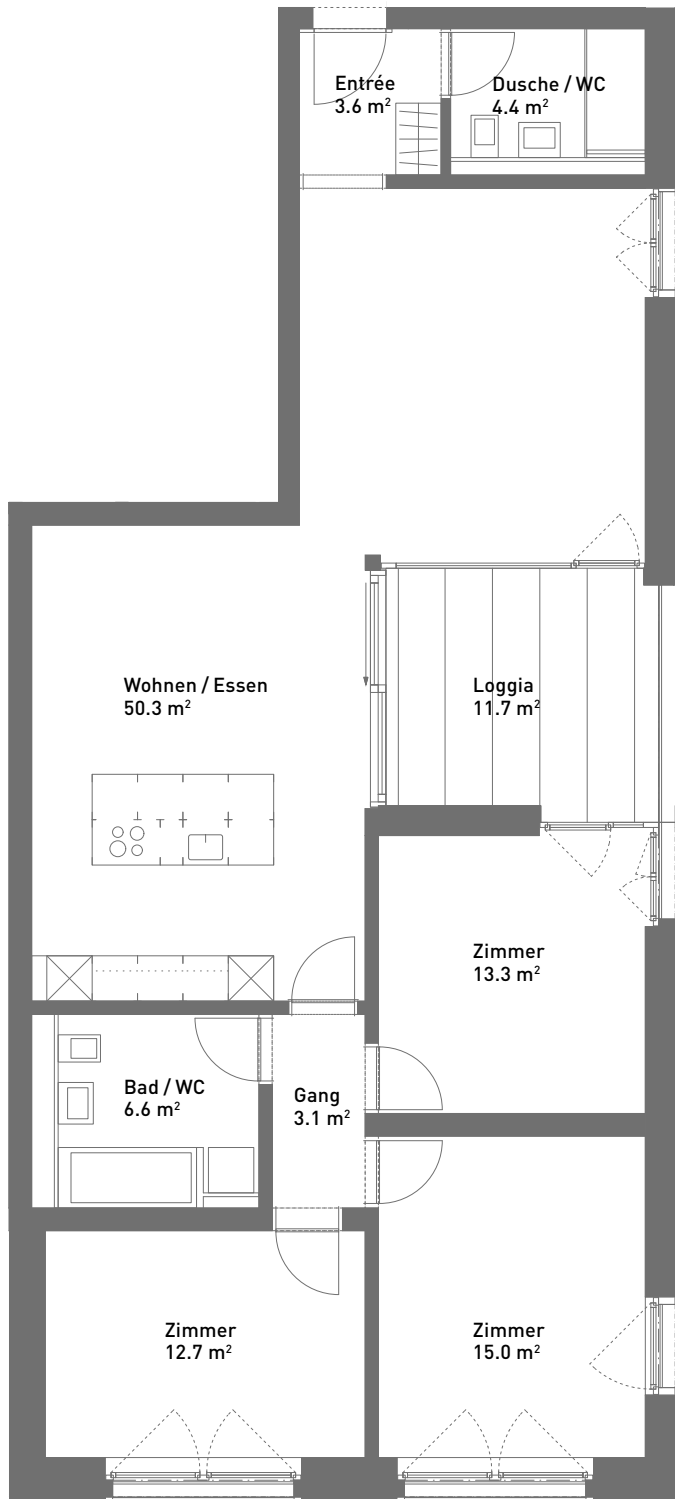


Spiserstrasse 12	Wohnung Nr. 12.501
5. Obergeschoss	
Aussenflächen	ca. 29 m <sup>2</sup>
Keller	ca. 5 m <sup>2</sup>
Nicht tragende Wand	■



# 4.5-Zimmer-Wohnung, ca. 109 m<sup>2</sup>

Masstab 1:100 (Format A4)

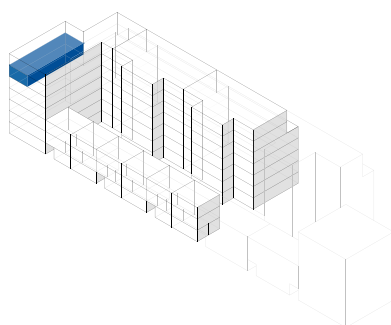
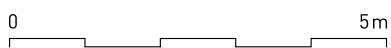
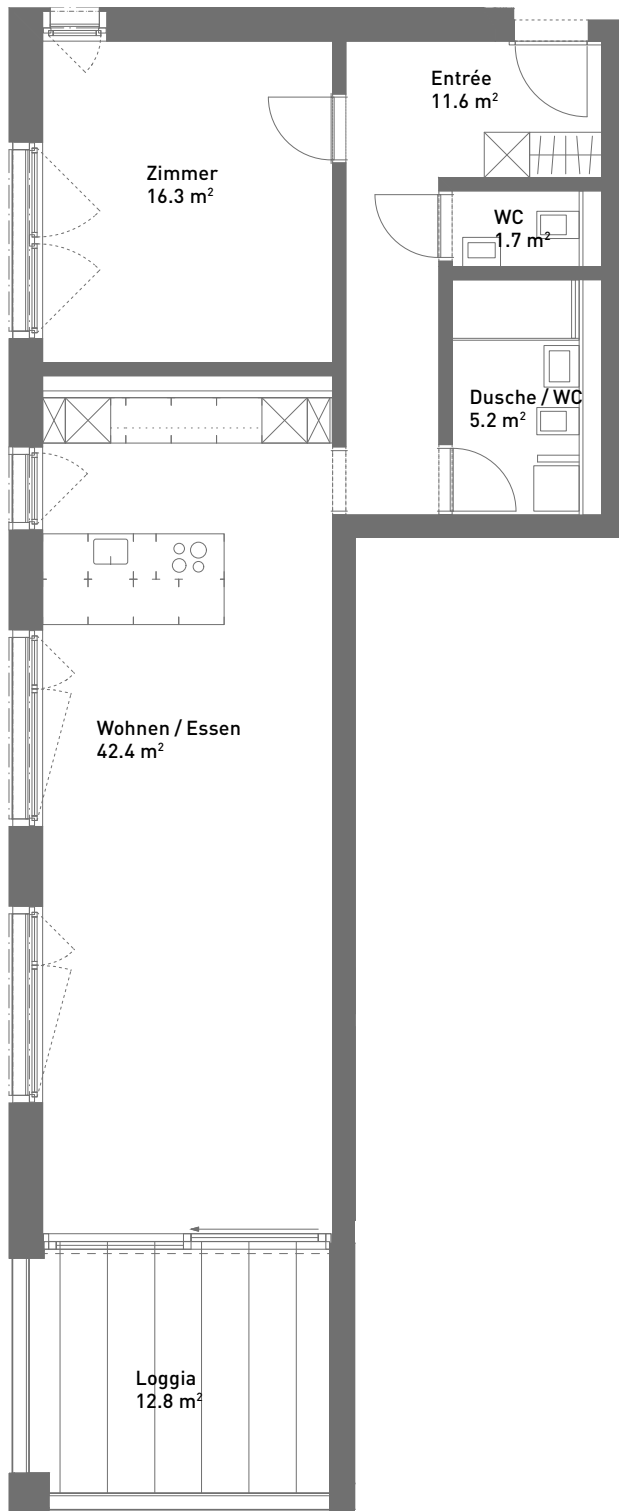


Spiserstrasse 12	Wohnung Nr. 12.502
5. Obergeschoss	
Aussenflächen	ca. 11 m <sup>2</sup>
Keller	ca. 8 m <sup>2</sup>



# 2.5-Zimmer-Wohnung, ca. 77 m<sup>2</sup>

Massstab 1:100 (Format A4)

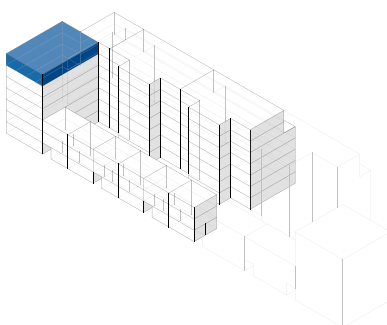
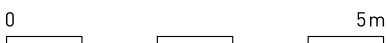
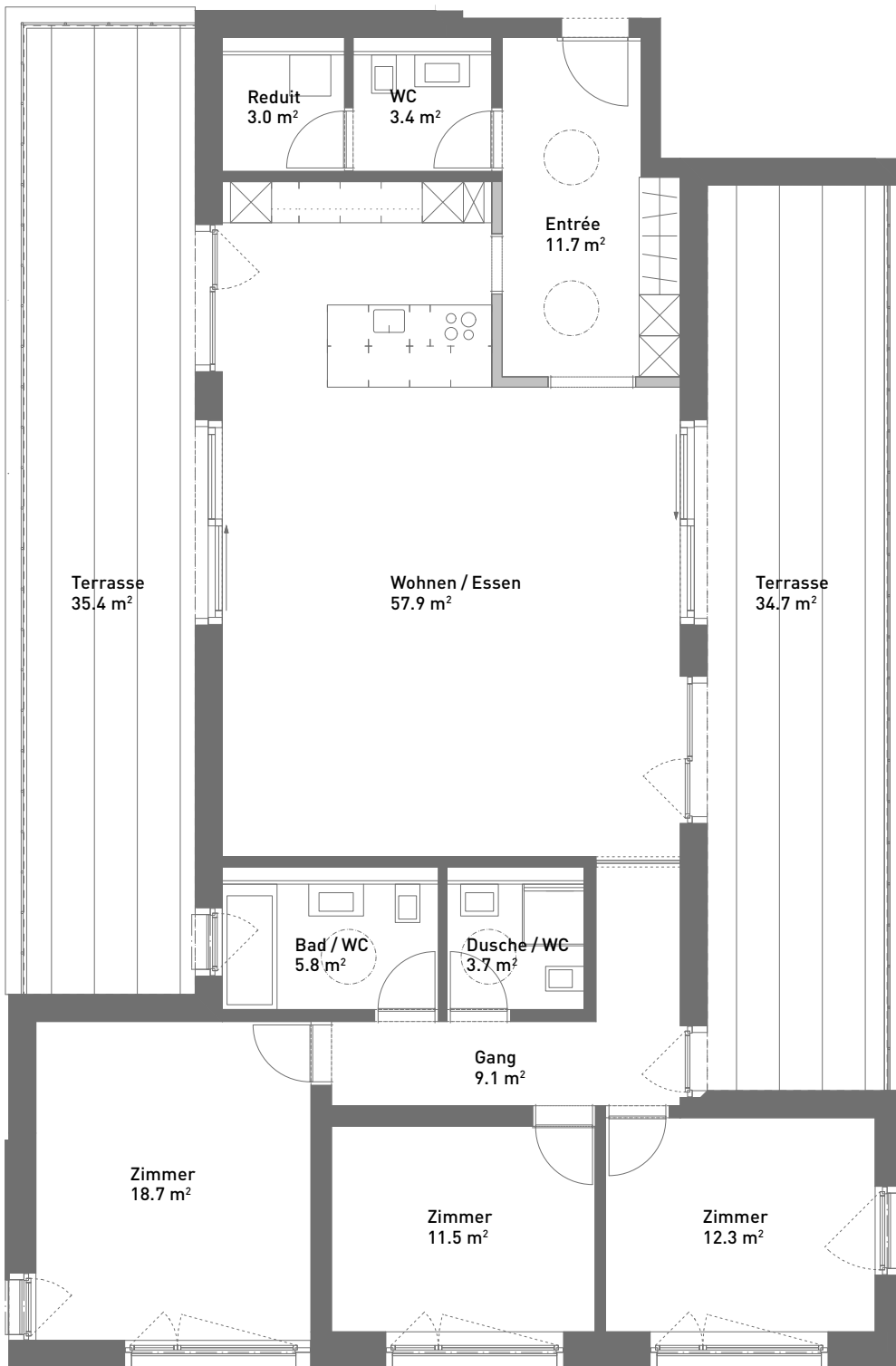


Spiserstrasse 12	Wohnung Nr. 12.503
5. Obergeschoss	
Aussenflächen	ca. 12 m <sup>2</sup>
Keller	ca. 5 m <sup>2</sup>



# 4.5-Zimmer-Wohnung, ca. 137 m<sup>2</sup>

Massstab 1:100 (Format A4)

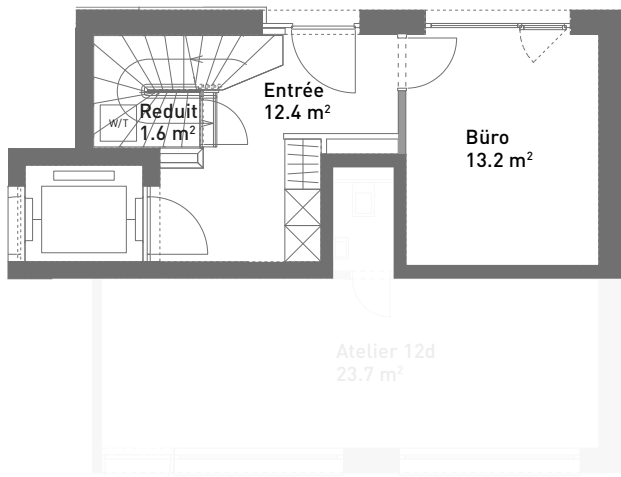


Spiserstrasse 12	Wohnung Nr. 12.601
Attika	
Aussenflächen	ca. 70 m <sup>2</sup>
Keller	ca. 8 m <sup>2</sup>
Nicht tragende Wand	■

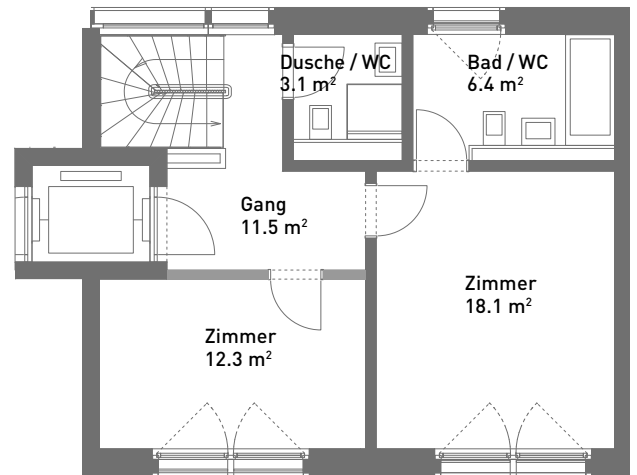


# 4.5-Zimmer-Townhouse, ca. 120 m<sup>2</sup>

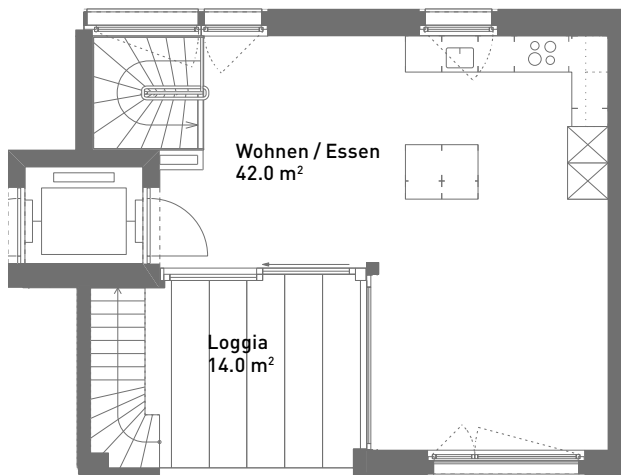
Masstab 1:125 (Format A4)



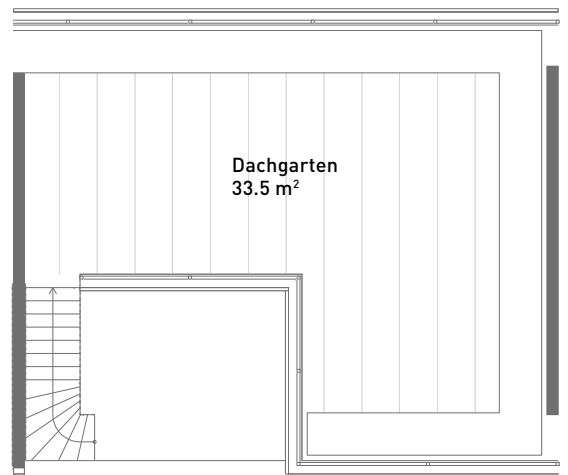
Erdgeschoss



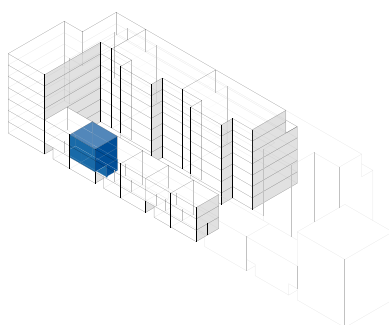
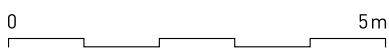
1. Obergeschoss



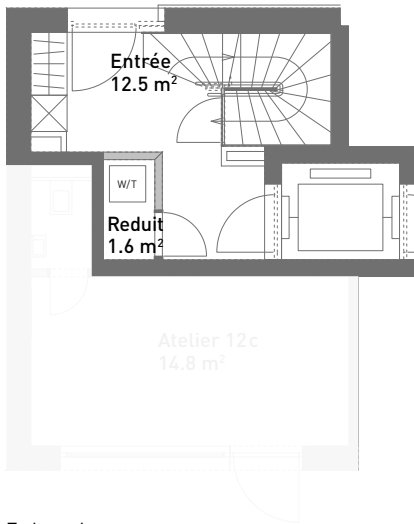
2. Obergeschoss



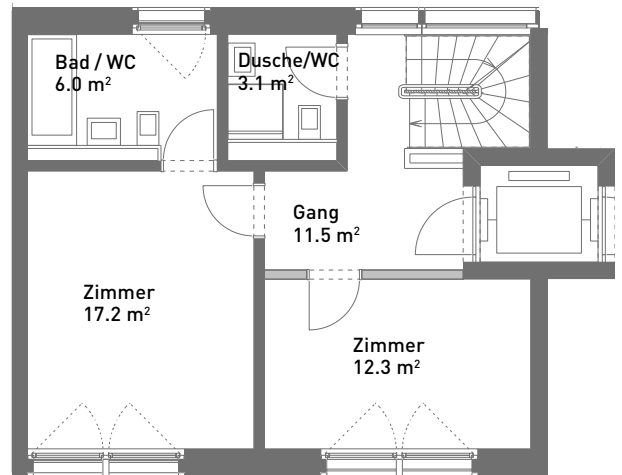
3. Obergeschoss



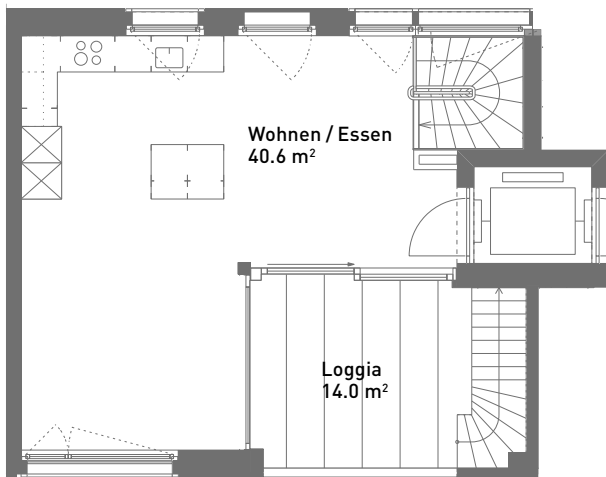
Spiserstrasse 12a	Townhouse Nr. 12a.1
Erdgeschoss–2. Obergeschoss	
Aussenflächen	ca. 47 m <sup>2</sup>
Keller	ca. 8 m <sup>2</sup>
Nicht tragende Wand	■



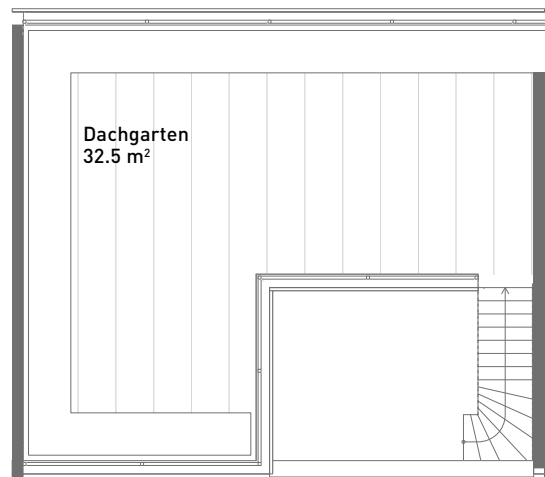
Erdgeschoss



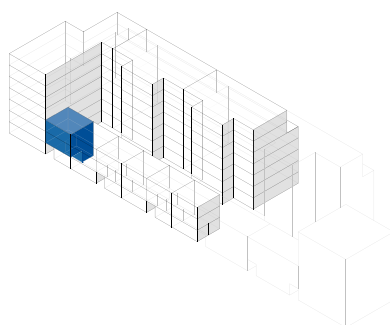
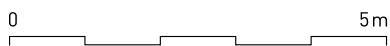
1. Obergeschoss



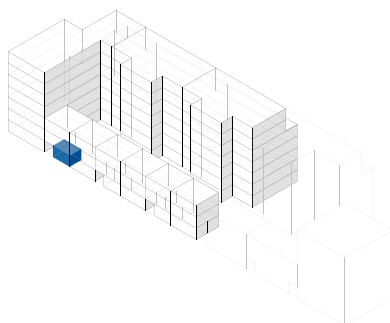
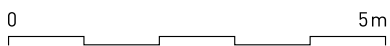
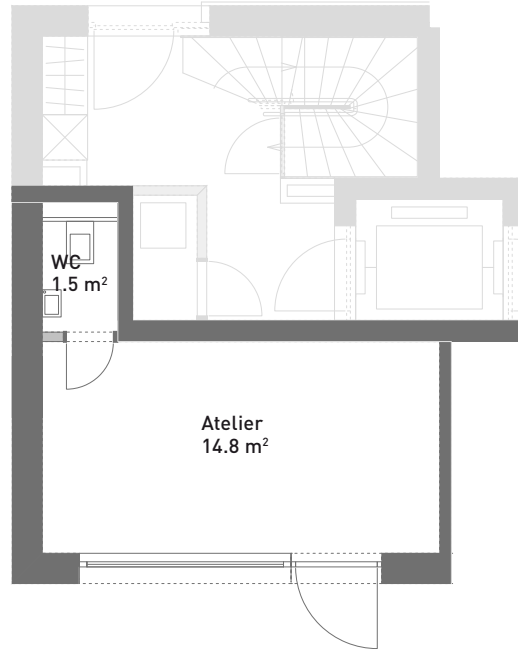
2. Obergeschoss



3. Obergeschoss



Spiserstrasse 12b	Townhouse Nr. 12b.2
Erdgeschoss–2. Obergeschoss	
Aussenflächen	ca. 46 m <sup>2</sup>
Keller	ca. 8 m <sup>2</sup>
Nicht tragende Wand	■

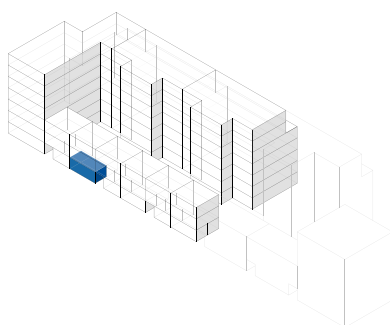
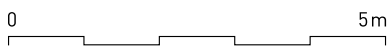
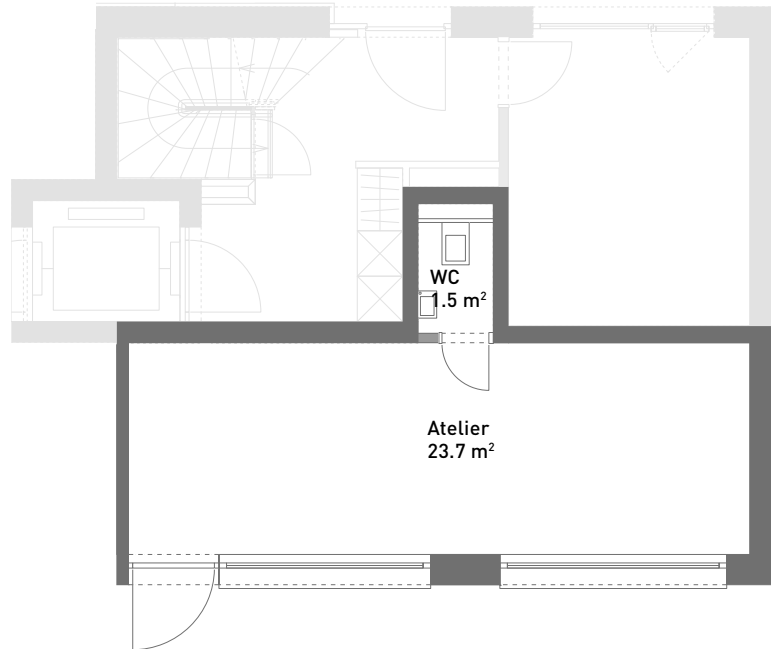


Spiserstrasse 12c

Atelier Nr. 12c

Erdgeschoss





Spiserstrasse 12d

Atelier Nr. 12d

Erdgeschoss

